

Clontibret

ALLENDALE ROAD | HEXHAM | NORTHUMBERLAND



FINEST
PROPERTIES



A unique Art Deco style detached family home with
extensive mature gardens, close to the picturesque
market town of Hexham

Hexham Town Centre 1.2 miles | Corbridge 5.9 miles | Newcastle International Airport 21.0 miles
Newcastle City Centre 24.6 miles





Accommodation in Brief

Ground Floor

Entrance Hall/Garden Room | Integral Workshops | Store Rooms

First Floor

Sitting Room | Kitchen/Dining/Family Room | Utility Room |WC

Second Floor

Principal Bedroom with En-suite Shower Room & Dressing Room

Four Further Bedrooms | Family Bathroom

Third Floor

Home Office/Sixth Bedroom

Externally

Driveway | Gardens | Around 0.5 Acres In Total









The Property

Clontibret is a wonderful Art Deco style detached house offering generous rooms with flexible uses to suit every family and fantastic gardens extending to approximately 0.5 acres altogether. This home is situated in a scenic, quiet location on the outskirts of Hexham, with countryside views, yet within just a short distance of all the facilities and amenities the market town has to offer.

The double height entrance hall creates a grand first impression and is a light, bright space to receive visitors, sit to remove shoes and coats and enjoy the sweeping views from the garden room. This floor also has access to the incredible storage this property has to offer, divided into individual areas including two workshop sections. Almost the whole of the ground floor is dedicated to storage with the option to create different rooms, for example a garage, gym, cinema room or wine cellar.

Stairs rising from the entrance hall lead to a large landing with a generous sitting room off to one side. This room is a wonderful place to relax, with light flooding in through the floor to ceiling window at one end, the elegant curved bay window at the other end and two delightful porthole windows in typical Art Deco style. A marble fireplace is a further pleasing period feature. To the other side of the landing is the fantastic kitchen with dining and living space. The kitchen has an excellent range of wall and floor units and integrated appliances including oven, combi oven and warming drawer, dishwasher fridge/freezer and an induction hob on the vast island bench and breakfast bar.



The kitchen is decorated in pleasing muted contemporary tones and enjoys views out onto the terrace - ideal for summer entertaining - gardens and fields via the window and French doors. It is a perfect family and entertaining space: open to a dining area large enough for a table to seat at least eight diners and a sitting area with room for sofas and chairs to pull up around the stove or to sit in and gaze out of the bay window at the countryside view. Off the family room is a useful and well equipped utility room with storage, laundry facilities and doors to the garden and a WC.

Back to the landing and a further staircase heads up to the second floor where the stunning principal bedroom suite offers dressing room with built-in wardrobes and leafy rooftops views, a smart, immaculate en-suite shower room and the elegant bedroom itself with another round feature window. Four more good sized, light, bright and attractive bedrooms are found on this floor, alongside a beautiful family bathroom with modern curved bath and separate shower.

On the top floor is a large room with windows on three sides, providing an amazing almost panoramic view of the countryside and towards Hexham. This space is currently set up as a home office, but it would lend itself to many different uses such as a sixth bedroom or play room. A built-in cupboard provides storage and a door leads out onto the roof.









Externally

A sweeping driveway with ample parking for several vehicles heads around the house to the rolling shutter door of the workshop. This could be reconfigured to create an integral garage. Clontibret's gardens with extensive lawns, seating areas and a wooden pergola to the front, and gravelled and raised beds to the rear are surrounded by mature trees, bushes, shrubs and flowering borders, providing a high degree of privacy and tranquility. Clontibret covers approximately 0.5 acres altogether.





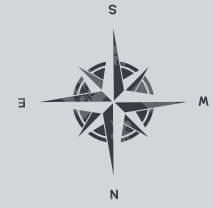
Local Information

Clontibret is ideally placed for all the amenities within the attractive, bustling market town of Hexham which offers a full range of day-to-day facilities with supermarkets, a good range of shops including independent delicatessen, butcher, baker, greengrocer and award winning bimonthly farmers' market, professional services, leisure/sports centre, swimming pool, independent cinema, theatre, arts centre and a hospital. The 7th century historic Abbey is at the heart of the town and the town centre contains several other historic buildings of note. The beautiful surrounding area consisting of Hadrians Wall and the Northumberland National Park to the north and the North Pennines Area of Outstanding National Beauty to the south provides superb walking country as well other country pursuits, with golf courses, sports clubs and Hexham racecourse also within easy reach. The charming and historic village of Corbridge offers additional amenities including further artisan shops while nearby Matfen Hall and Close House offer excellent leisure facilities. Newcastle city centre is within easy reach and provides further comprehensive cultural, educational, recreational and shopping facilities.

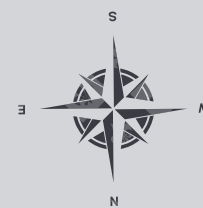
For schooling there is a wide selection of schools in Hexham including The Sele First School, which has achieved 'outstanding' Ofsted reports for many years and provides exceptional education from 3-9 years and the highly regarded Queen Elizabeth High School (Ofsted rated Outstanding). In addition, Mowden Hall Preparatory School is nearby and provides private education from nursery up to 13 years. There are several private day schools in Newcastle with school transport offered from Hexham.

For the commuter the A69 provides excellent access to Newcastle to the east and Carlisle to the west and onward access to the A1 and M6. The rail station at Hexham provides regular cross-country services to Newcastle and Carlisle, where connecting main line services are available to major UK cities north and south. By train London is accessible within four hours. Newcastle International Airport is also within easy reach.

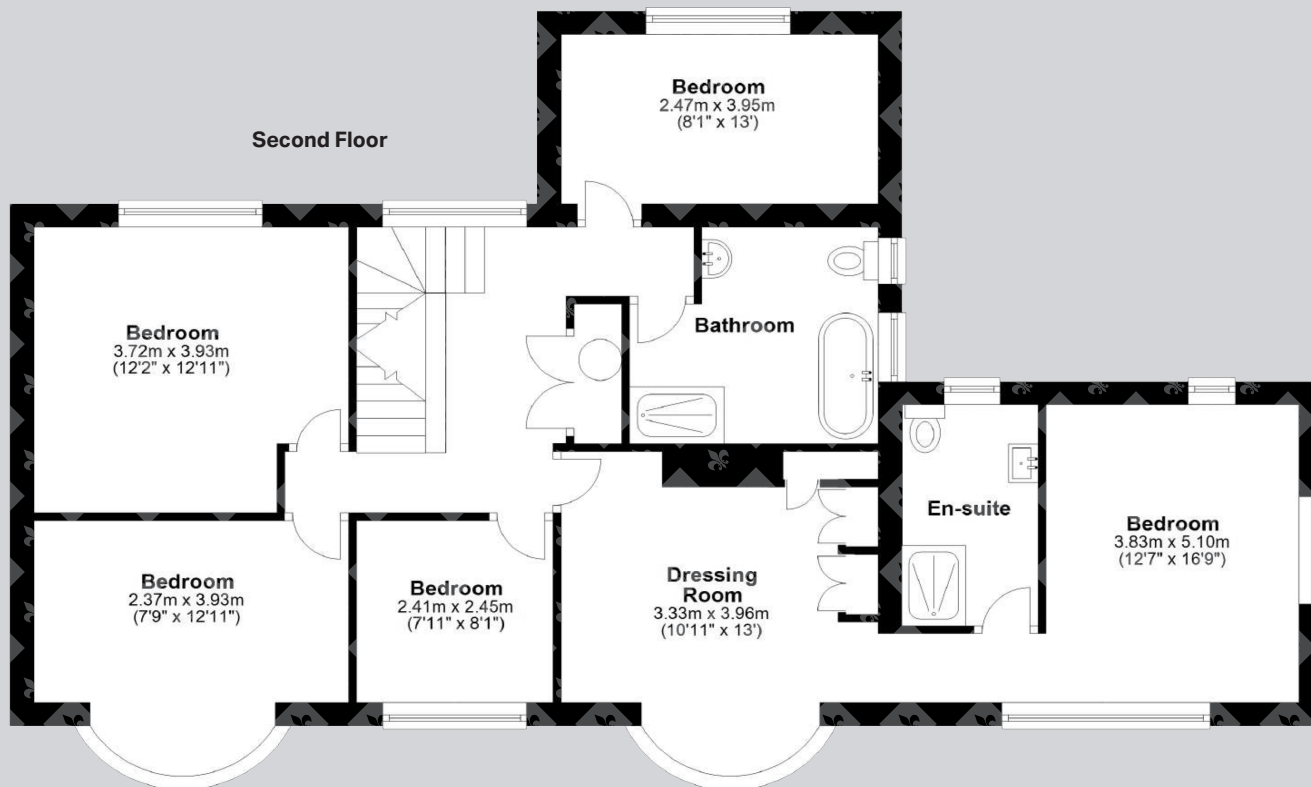
Floor Plans



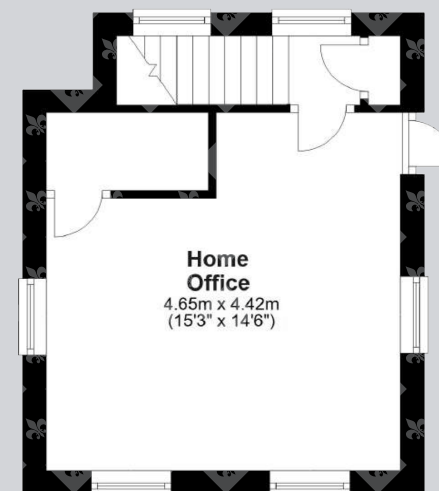
Total area: approx. 353.5 sq. metres (3805.1 sq. feet)



Second Floor



Third Floor



Total area: approx. 353.5 sq. metres (3805.1 sq. feet)

Directions

From Corbridge take the B6321 out of the village going across the River Tyne and on to the A695 to Hexham. After about 3.4 miles you will reach Hexham and at the roundabout follow Priestpopple (B6305) and continue onto Hencotes. After 0.5 miles take the left turn onto Allendale Road and continue for approximately 0.9 miles before turning right onto Shaws Lane. Clontibret is the third house on the right-hand side, with curved stone driveway entrance walls.

Google Maps

what3words



///memo.neatly.herbs

Wayleaves, Easements & Rights of Way

The property is being sold subject to all existing wayleaves, easements and rights of way, whether or not specified within the sales particulars.

Services

Mains electricity, gas, water and drainage. Gas-fired zoned central heating system.

Postcode

NE46 2NH

Council Tax

Band G

EPC

Rating D

Tenure

Freehold

Viewings Strictly by Appointment

T: 01434 622234

E: corbridge@finestgroup.co.uk







Finest Properties

15 Market Place | Corbridge | Northumberland | NE45 5AW

01434 622234

corbridge@finestgroup.co.uk

finestproperties.co.uk

*Specialists in the marketing
of distinctive property*

IMPORTANT INFORMATION Finest Properties, for themselves and for the Vendors and Lessors of this property whose Agents they are give notice that: (1) The particulars are set out as a general outline only for the guidance of intended purchasers or lessees and do not constitute, nor constitute part of, an offer or contract; (2) All descriptions, dimensions, reference to condition and necessary permissions for use and occupation and other details are given without responsibility and any intending purchasers or tenants should not rely on them as statements or representations of fact, but must satisfy themselves by inspection or otherwise as to the correctness of each of them; (3) No person in the employment of Finest Properties, has any authority to make or give any representation or warranty whatever in relation to this property.