

6 Ryton Village West

RYTON | TYNE & WEAR



FINEST
PROPERTIES



A beautiful period property with lovely gardens in a tranquil village location

Wylam Railway Station 2.7 miles | Newcastle City Centre 9.7 miles | Gateshead 8.6 miles
Newcastle International Airport 8.3 miles | Corbridge 12.3 miles | Durham City Centre 23.1 miles





Accommodation in Brief

Ground Floor

Entrance Hall | Sitting Room | Dining Room | Study | Kitchen
Shower Room | Garden Room | Wine Cellar

First Floor

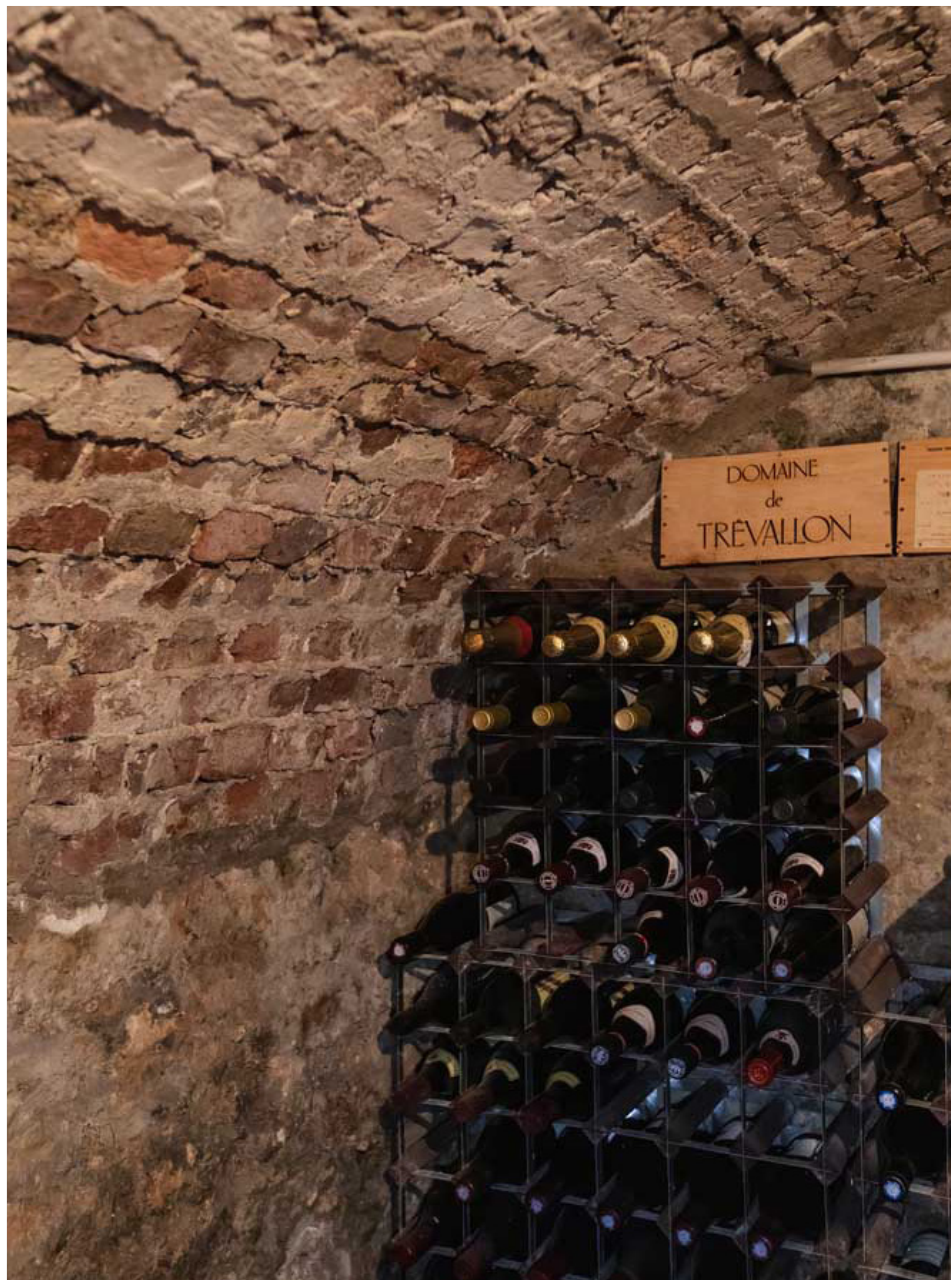
Principal Bedroom | Two Further Bedrooms | Bathroom

Second Floor

Bedroom | Shower Room | Dressing Room







The Property

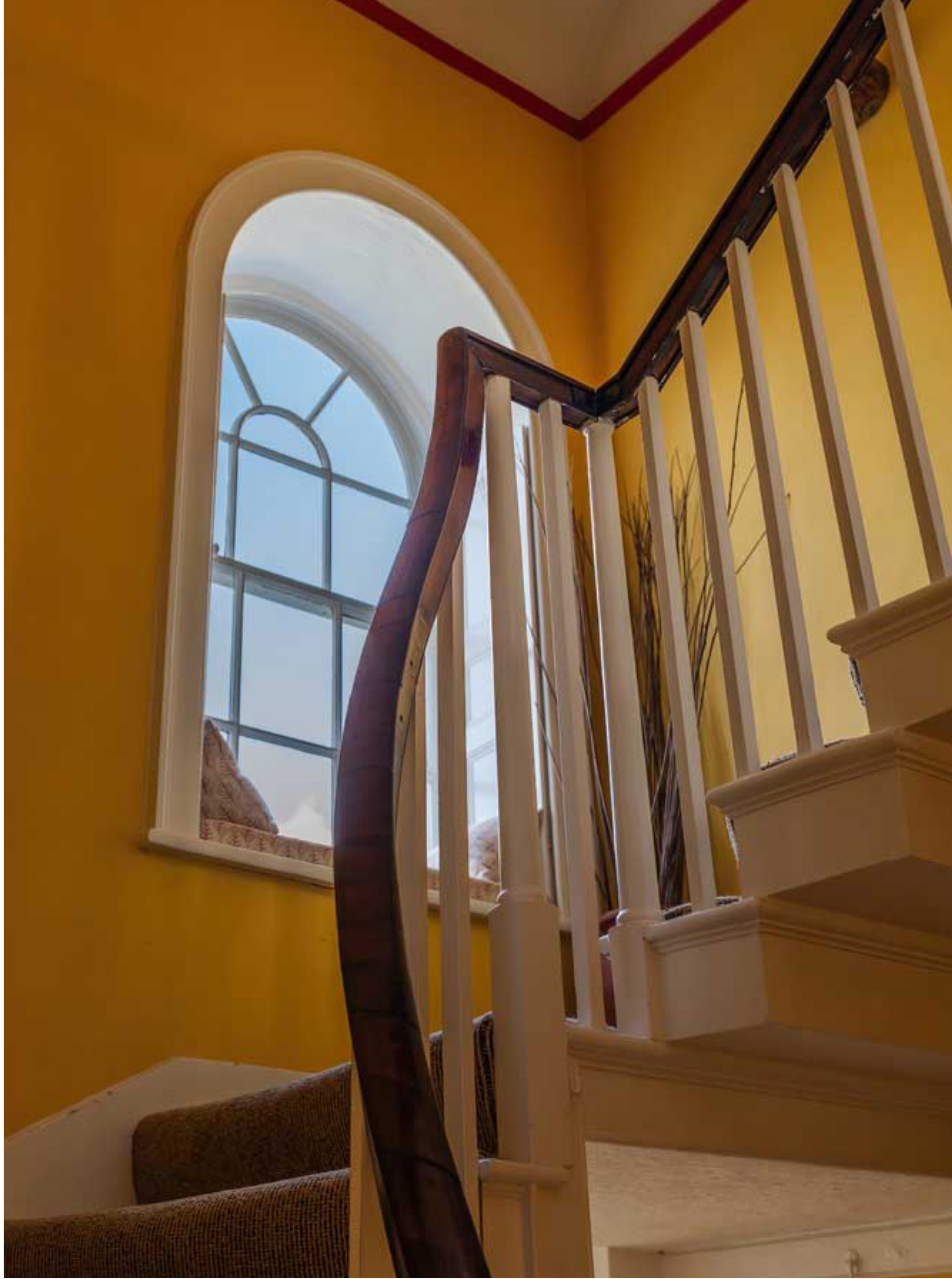
Situated in the historic and sought-after village of Ryton, 6 Ryton Village West is a delightful Grade II Listed property showcasing vibrant and spacious accommodation spread across three floors. The property features an attractive Georgian red-brick facade and a lovely landscaped garden to the rear, overlooked by the spire of the nearby Holy Cross Church.

Inside, the main living spaces are grand and welcoming, characterized by high ceilings, ornate light fixtures, and expansive sash windows typical of the Georgian period. The sitting room and dining room display tastefully rich decor, creating a lovely environment for entertaining guests. Beyond these, the kitchen has been thoughtfully extended into an open-plan living area that leads to a garden room, providing great views of the rear garden and a peaceful place to sit and unwind. Also on the ground floor is a study and a convenient, newly installed shower room. Notably, the property includes a wine cellar, accessible via the main hallway.

Ascending to the upper levels via an elegant, curved staircase, three well-proportioned bedrooms are neatly arranged across the first floor. The decor preserves the same vibrant aesthetic that characterizes the entire property. A stylish family bathroom services these bedrooms and boasts fired-earth tiles and a free-standing bath.

On the second floor, a fourth bedroom sits adjacent to a shower room and dressing room. The dressing room features built-in wardrobes, and there is additional storage within the eaves opposite. Delightful views overlooking Ryton's church can be seen from the fourth bedroom.







Externally

Externally, the property excels with a spacious and lovingly maintained terraced garden that serves as a quiet village retreat. Mature shrubs and flower beds line the lawn with plenty of places to sit and enjoy the ambiance. Towards the end of the garden, flower and allotment beds are bisected by a gravel path leading to a striking red brick greenhouse. A quaint pond with a fountain also features in addition to a recently re-roofed shed providing a hub for any keen gardeners.





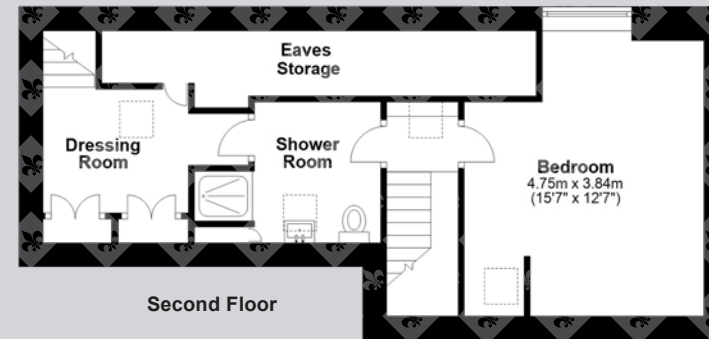
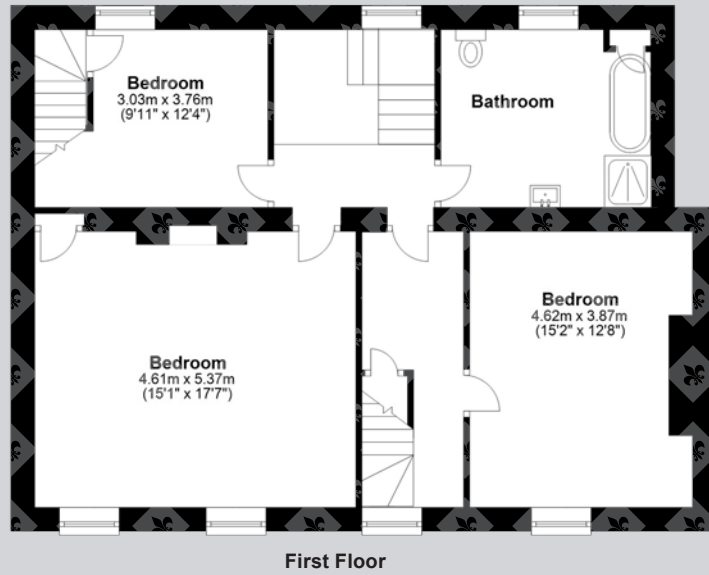
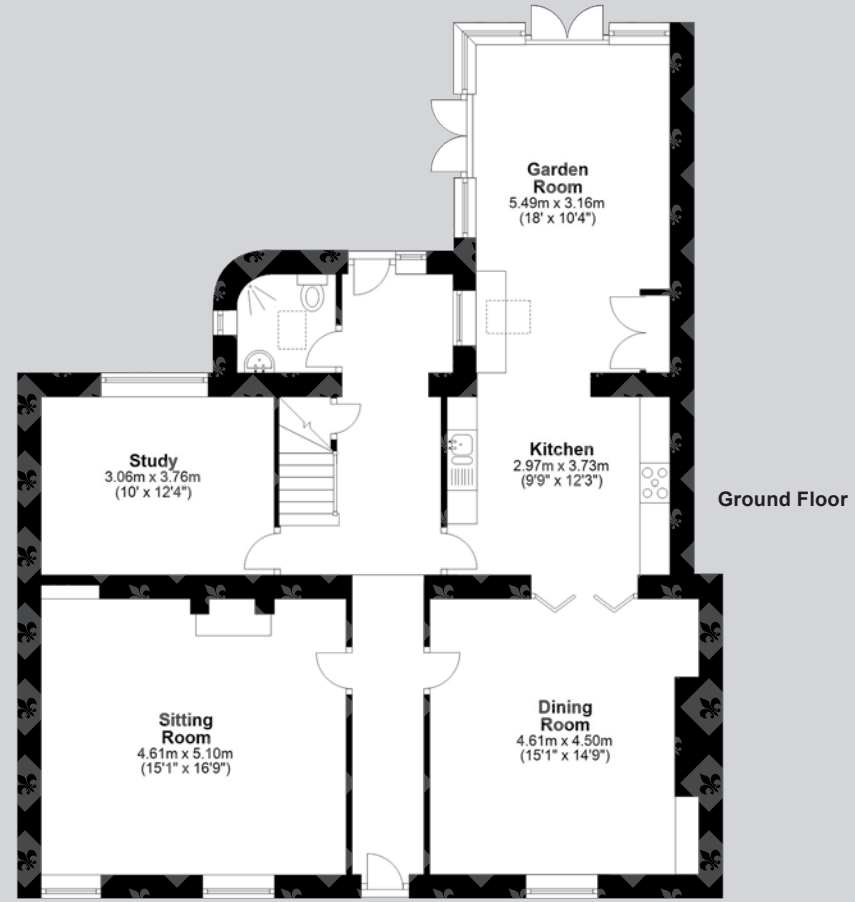
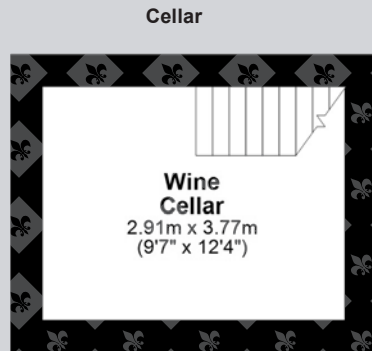
Local Information

Ryton is a historic and sought-after commuter village in the Tyne Valley with excellent links to Gateshead and Newcastle City Centre, with the benefit of beautiful scenery and countryside nearby. The village offers day-to-day shopping, schooling, professional services, pubs and restaurants and regular transport links to the Metro Centre, Gateshead and Newcastle City Centre. Nearby is Tyneside Golf Club and also Ryton Golf Club and there is easy access to lovely riverside walks.

For the commuter, there is excellent access to Newcastle City Centre and the A1 and the rail stations at Wylam and Blaydon provide regular links to Newcastle, which in turn link to other main line services to major UK cities north and south. Newcastle International Airport is also within easy reach.



Floor Plans



Total area: approx. 255.7sq. metres (2751.8 sq. feet)

Google Maps

what3words



///holds.rail.thus

Wayleaves, Easements & Rights of Way

The property is being sold subject to all existing wayleaves, easements and rights of way, whether or not specified within the sales particulars.

Services

Mains electricity, gas and water. Gas-fired boiler.

Postcode

NE40 3QD

Council Tax

Band F

EPC

Rating Exempt

Tenure

Freehold

Viewings Strictly by Appointment

T: 01434 622234

E: corbridge@finestgroup.co.uk







Finest Properties

15 Market Place | Corbridge | Northumberland | NE45 5AW

01434 622234

corbridge@finestgroup.co.uk

finestproperties.co.uk

*Specialists in the marketing
of distinctive property*

IMPORTANT INFORMATION Finest Properties, for themselves and for the Vendors and Lessors of this property whose Agents they are give notice that: (1) The particulars are set out as a general outline only for the guidance of intended purchasers or lessees and do not constitute, nor constitute part of, an offer or contract; (2) All descriptions, dimensions, reference to condition and necessary permissions for use and occupation and other details are given without responsibility and any intending purchasers or tenants should not rely on them as statements or representations of fact, but must satisfy themselves by inspection or otherwise as to the correctness of each of them; (3) No person in the employment of Finest Properties, has any authority to make or give any representation or warranty whatever in relation to this property.