

Coopers Corner, Ide Hill, Sevenoaks





An updated family home ideally located for local amenities, schools and transport links.

The property enjoys far-reaching views and is located within the Green Belt and area of Outstanding Natural Beauty.



Tenure: Available freehold

Local authority: Sevenoaks District Council

Council tax band: G





The Property

Ground Floor

The house has been updated by the current owners including a kitchen/dining room extension which makes the most of the view and south facing garden and combines the traditional Kent weather-board style with a modern and contemporary interior. The house has ample space for parking together with a single garage in front of the house and is entered through a hallway with excellent storage options and the stairs to the first floor. The main living room is located in the centre of the house and benefits from wonderful countryside views and opens up through french doors out onto the paved terrace, perfectly set for al fresco dining and entertaining. A door on the southern side links to a large conservatory; ideal for entertaining, a gym or children's playroom/craft room. On the other side of the entrance hallway is located a family snug/television room and a corridor leading to the light and bright kitchen/dining room. with central island and modern appliances, the kitchen provides both wonderful views but also easy access out to the garden and the paved terrace. A utility room and guest WC complete the ensemble.

First Floor

On the first floor the house provides a principal suite with shower room at the north end of the house together with three additional double bedrooms and a family bathroom. All the rooms have ample storage and the house contains further storage in the loft.







Annexe

Separate to the main house but easily accessible, sits the annex; made up of a double bedroom, living room (which could easily be turned into a kitchen/diner) and a mezzanine storage/children's play area. recently updated the annex would make a perfect office (as it is in use as now), family living space or additional overflow accommodation.

The garden faces south-west and is centred around its wonderful paved terrace, linking the main house with the annex. Perfect for entertaining the terrace links to the swimming pool (with cover and stone surround). The garden then completes the ensemble.



Location

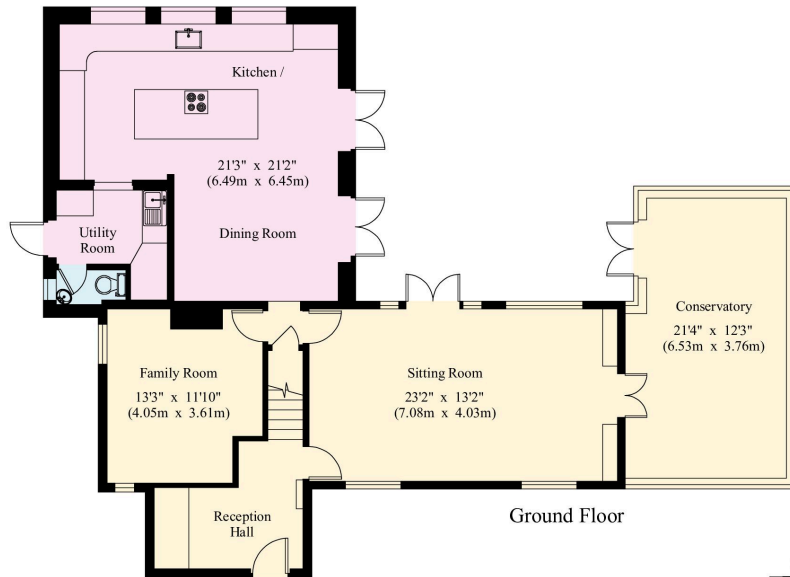
Located just outside of the village of Ide Hill (with its village green, primary school and popular community farm shop) and within easy reach of Sevenoaks and its train station and schools, Sycamores benefits from a fantastic countryside feel but has an enviable practicality with its access to amenities, transport links and schools. Schools in immediate area include The New Beacon, Sevenoaks School (senior and Prep) Walthamstow Hall School for Girls and Solefields as well as excellent Grammar schools including Judd, Skinners, Weald of Kent Girls and Tunbridge Wells Grammar School (with annex in Sevenoaks). The area includes many sporting and leisure facilities including a golf course and health club at Nizels together with well respected golf courses at Wildernesse and Knole Park.

The house is conveniently set for access to the M25 motorway and its links (via the M26) to the Channel Ports and to the airports at Gatwick and Heathrow as well as London and the wider UK motorway network.



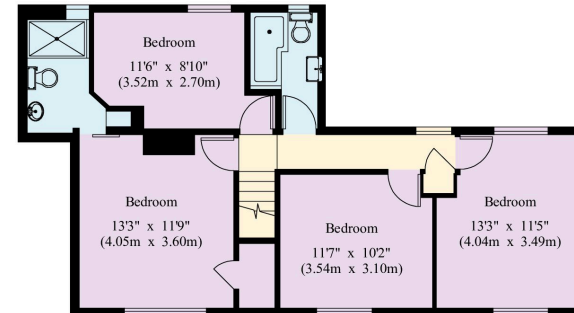


House - Gross Internal Area : 190.1 sq.m (2,046 sq.ft.)
Summer House - Gross Internal Area : 73.2 sq.m (787 sq.ft.)
(Including Mezzanine)

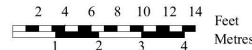


Ground Floor

First Floor



First Floor



© 03/02/23 Trueplan (UK) Ltd. 01892 614 881

This plan is for guidance only and must not be relied upon as a statement of fact. Attention is drawn to the important notice on the last page of the text of the Particulars.

Knight Frank
Sevenoaks
 113-117 High Street
 Sevenoaks
 TN13 1UP
knightfrank.co.uk

I would be delighted to tell you more
Matthew Hodder-Williams
 01732 744460
matthew.hodder-williams@knightfrank.com



Fixtures and fittings: A list of the fitted carpets, curtains, light fittings and other items fixed to the property which are included in the sale (or may be available by separate negotiation) will be provided by the Seller's Solicitors.
 Important Notice: 1. Particulars: These particulars are not an offer or contract, nor part of one. You should not rely on statements by Knight Frank LLP in the particulars or by word of mouth or in writing ("information") as being factually accurate about the property, its condition or its value. Neither Knight Frank LLP nor any joint agent has any authority to make any representations about the property, and accordingly any information given is entirely without responsibility on the part of the agents, seller(s) or lessor(s). 2. Photos, Videos etc: The photographs, property videos and virtual viewings etc. show only certain parts of the property as they appeared at the time they were taken. Areas, measurements and distances given are approximate only. 3. Regulations etc: Any reference to alterations to, or use of, any part of the property does not mean that any necessary planning, building regulations or other consent has been obtained. A buyer or lessee must find out by inspection or in other ways that these matters have been properly dealt with and that all information is correct. 4. VAT: The VAT position relating to the property may change without notice. 5. To find out how we process Personal Data, please refer to our Group Privacy Statement and other notices at <https://www.knightfrank.com/legals/privacy-statement>.
 Particulars dated March 2023. Photographs and videos dated March 2023.
 Knight Frank is the trading name of Knight Frank LLP. Knight Frank LLP is a limited liability partnership registered in England and Wales with registered number OC305934. Our registered office is at 55 Baker Street, London W1U 8AN where you may look at a list of members' names. If we use the term 'partner' when referring to one of our representatives, that person will either be a member, employee, worker or consultant of Knight Frank LLP and not a partner in a partnership. If you do not want us to contact you further about our services then please contact us by either calling 020 3544 0692, email to marketing.help@knightfrank.com or post to our UK Residential Marketing Manager at our registered office (above) providing your name and address.