



10 Seabrook Road, Weston-Super-Mare, BS22 8JE

£340,000

- Beautifully Presented 1930's Semi Detached House
- Three Bedrooms
- Lounge
- Open Plan Kitchen/Diner
- Shower Room
- South West Facing Rear Garden
- Garage
- EPC D

10 Seabrook Road, Weston-Super-Mare BS22 8JE

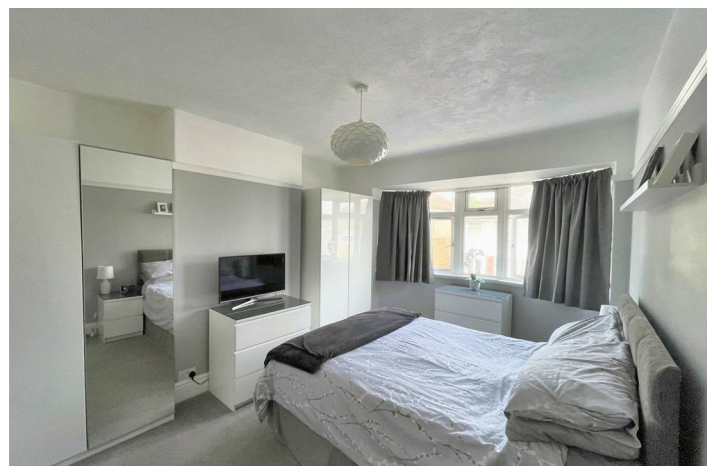
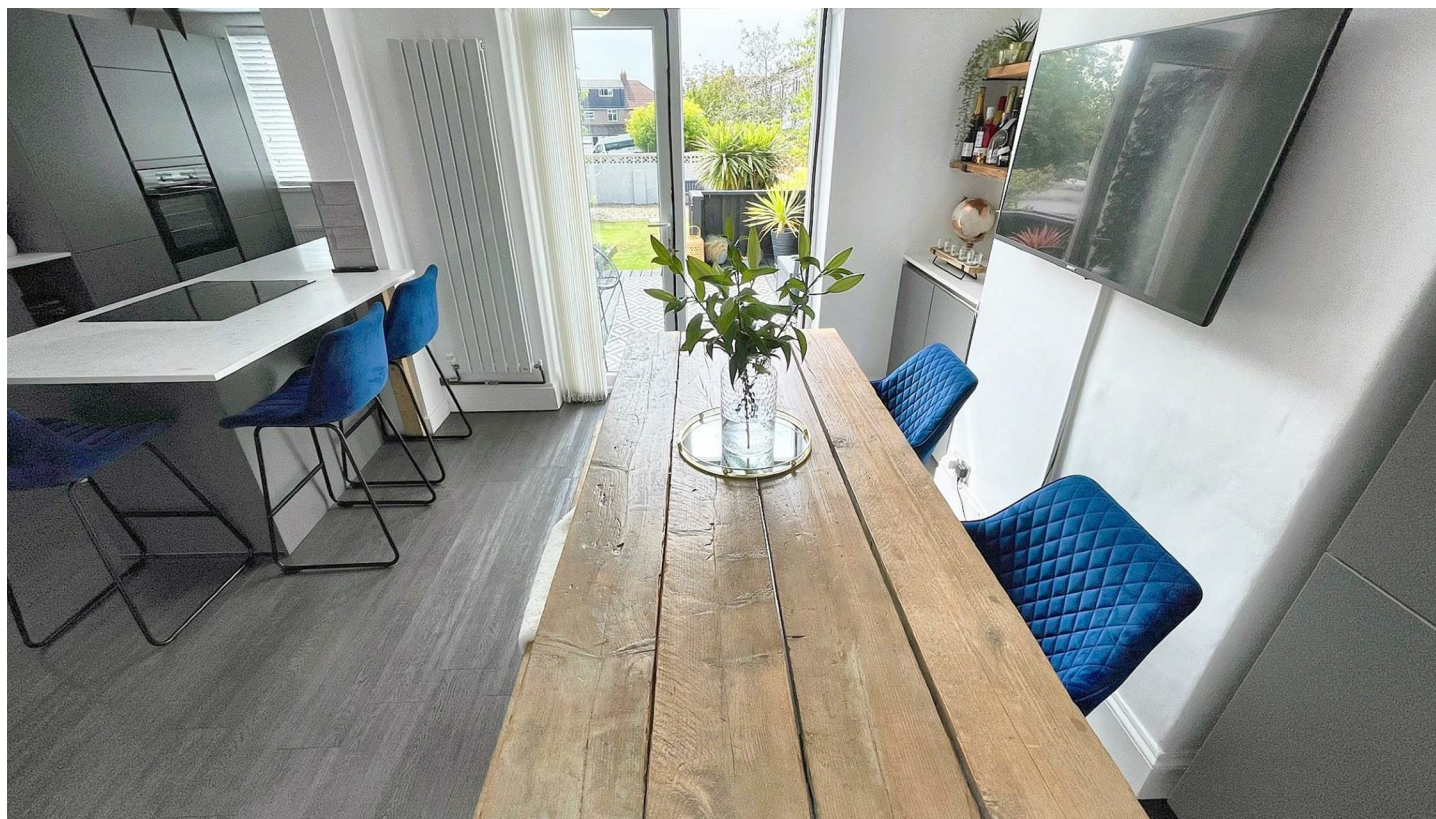
Rachel J Homes is delighted to market this Beautifully Presented 1930's Semi Detached House ideally situated in the popular location of Milton with easy access to Schools, Shops, Amenities and Transport Links via Rail/Bus and M5 corridor. If you are looking for a home that you can "just move in" then make sure this is on your list to view. The accommodation briefly comprises of Entrance Hall, Lounge, Open plan Kitchen/Diner, Three Bedrooms, Shower Room, South West Facing Rear Garden, and Garage which is used for storage. Added benefits of this super home include double glazing and gas central heating. Accompanied viewings - CALL NOW!!



EPC
D

Freehold

Council Tax Band: C



Entrance Hall

Composite entrance door, Upvc double glazed window to side, picture rail, radiator, laminate flooring, stairs to first floor, door to Kitchen/Diner and door to;

Lounge

4.20 x 3.73 (13'9" x 12'2")

Upvc Double glazed Bay window to front, picture rail, T.V.point, radiator, open feature fireplace.

Kitchen/Diner

5.77 x 5.67 (18'11" x 18'7")

Upvc Double glazed window to side and rear, range of wall and base units with composite work surface over and tiled splash back, built in induction hob, eye level electric oven with microwave over, built in fridge freezer and dish washer, under stairs cupboard with space for washing machine, inset sink with mixer tap and drainer grooves, radiator, vertical feature radiator, Upvc Double glazed French doors to rear garden.

Stairs & Landing

Upvc Double glazed window to side, access to loft, picture rail, doors off

Bedroom 1

4.35 into bay x 3.31 (14'3" into bay x 10'10")

Upvc Double glazed Bay window to front, picture rail, radiator.

Bedroom 2

3.5 x 3.5 (11'5" x 11'5")

Upvc Double glazed window to rear, picture rail, radiator, cupboard housing boiler.

Bedroom 3

2.54 x 2.25 (8'3" x 7'4")

Upvc Double glazed window to front, picture rail, radiator.

Shower Room

Upvc Double glazed window to rear, walk in shower with double sunflower hot water mixer shower, wash hand basin set into vanity unit, back to wall low level W/C, heated towel rail, part panelled walls.

Rear Garden

Facing South West, enclosed by wall and fence, deck area with steps down to lawn with mature shrubs and tree border and decorative gravel, side gate giving access to driveway and garage.

Garage

Up and over door, light and power

Front

Enclosed by wall with decorative gravel.

