



# 28 Balloch Park

Aberfeldy, Perthshire PH15 2LU



VMH ESTATE AGENTS





## Enjoying a tranquil setting, this stunning holiday lodge offers a perfect riverside retreat

- Entrance vestibule with utility area off
- Open plan sitting/dining room/kitchen
- Principal bedroom with en-suite
- 2 further bedrooms
- 2 storage sheds
- Gas central heating
- Triple/Double glazing
- Residents parking with space for 4 cars
- Large private front garden
- Well kept communal grounds



**Offers Over: £255,000**

**Tenure: Leasehold**

Further information can be found in the home report.

[vmh.co.uk](https://www.vmh.co.uk)



# About the Property

Flanked by the River Tay and Tay Forest Park, this high-spec detached holiday lodge enjoys a truly breathtaking location in Balloch Park by Aberfeldy. The exceptional three-bedroom lodge is finished to impeccable standards, with top-quality fixtures and fittings, including two bathrooms and an ultra-modern kitchen. It brings sociable open-plan living to the fore, and is beautifully decorated in neutral hues.

## Management

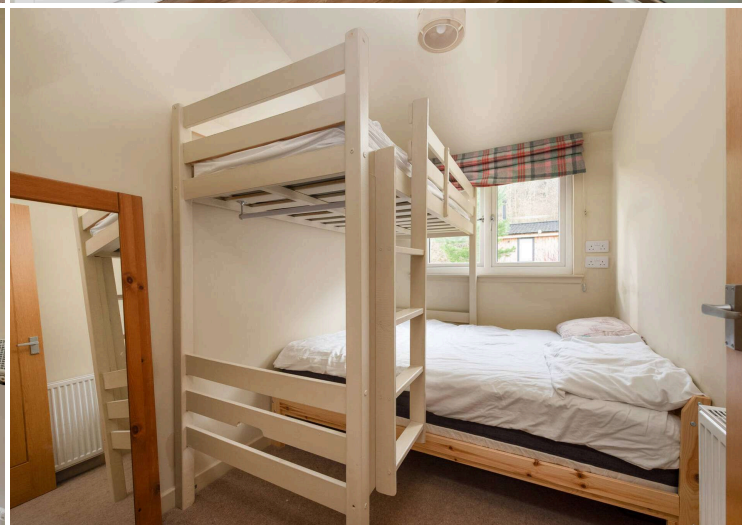
Please note the site fees are approximately £2,200 per annum.







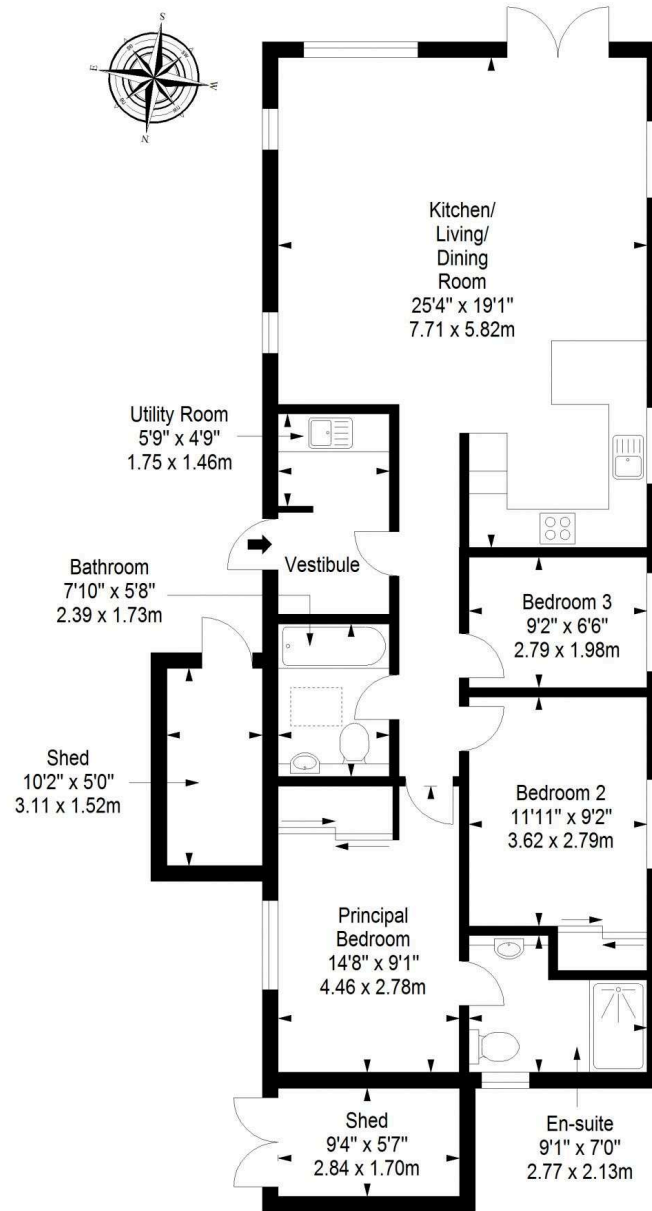




## Location

Balloch Park is situated between Drummond Hill & the River Tay. There is direct access to Drummond Hill which offers a network of paths and trails ideal for walking, cycling and horse trekking. The River Tay offers fishing and lovely riverside walks. The village of Kenmore is within a short drive and has a primary school, village shop, museum, a variety of scenic walking and cycling routes and golf courses. Aberfeldy is a short drive to the east and benefits from having both primary and secondary schools, a health centre, a community cinema and various sports facilities, including a golf course and tennis courts.

Ground Floor  
Approx. 103.4 sq. metres (1113.0 sq. feet)



Total area: approx. 103.4 sq. metres (1113.0 sq. feet)



VMH ESTATE AGENTS



VMH SOLICITORS

*More* is our middle name.

**Registered Office: 8 Sibbald Walk, Edinburgh, EH8 8FT**

 **0131 622 2626**

 **property@vmh.co.uk**

 **vmh.co.uk**

 **DX: 552210, Edinburgh 68**

The dimensions provided are for illustration purposes only; detailed measurements should be taken personally. No documentation will be exhibited in respect of the compliance or otherwise of replacement windows.  
Although every attempt has been taken to ensure accuracy, the details within the brochure are not guaranteed or warranted and will not form part of any future contract to buy.