



Morgans

PROPERTY

Flat A, 49 Oakfield Street, Kelty, KY4 0BU

Offers Over £84,950







Absolutely lovely ground floor apartment offered in nice condition within the ever popular commuter village of Kelty. The property is modern and generous throughout ideally suiting first time buyers, couples and investors if looking for a good annual yield. The subjects benefit from private off street parking and ample visitors parking. Flat A is accessed from the rear car park leading into communal entrance with private door and spacious entrance hall with lounge/diner and fitted kitchen. There are two double bedrooms and bathroom. The property has french doors off the lounge with its own front garden and communal rear gardens. It is double glazed with gas central heating.





LOCATION

Kelty is well placed for commuting, as it is adjacent to the M90 motorway with easy access to Edinburgh, Perth, Kinross and Dunfermline. In recent years Kelty has developed into a pleasant residential community. The subjects are well placed for easy access to local shops, primary schools, bank, churches, bowling club and other central amenities. There is a regular bus service to the main neighbouring towns of Cowdenbeath, Dunfermline and Kinross. Lochore Meadows Country Park, Loch Leven Heritage Trail, Loch Fitty are also in easy reach offering various leisure and recreational facilities.

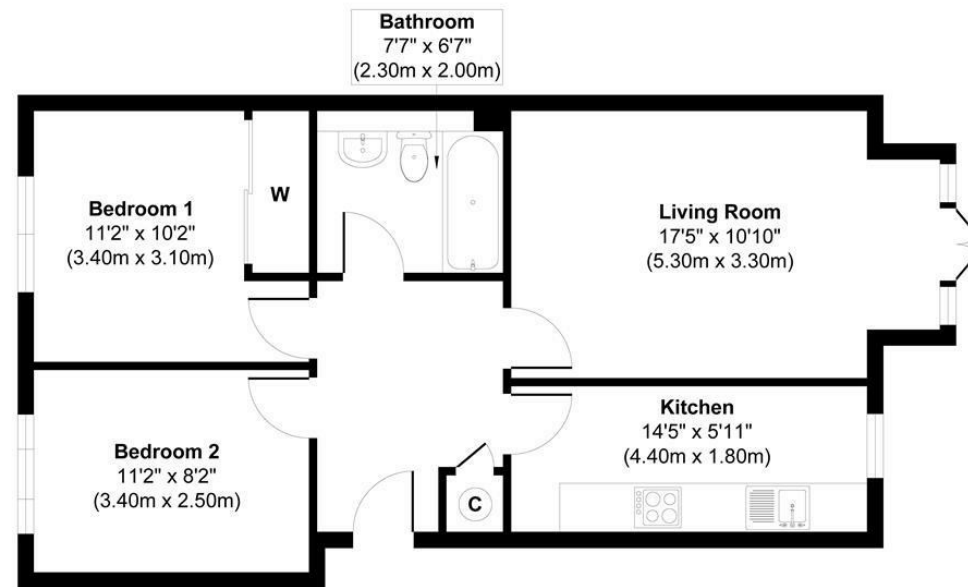
EXTRAS INC. IN SALE/AGENTS NOTE

All floor coverings, blinds, bathroom fittings together with integrated appliances.

From 1st February 2022, residential properties in Scotland are required by law to have installed a system of inter-linked smoke alarms, carbon monoxide detectors and heat detectors (the "inter-linked system"). No warranty is given that any interlinked system has been installed in this property and interested parties should make their own enquiries.



Oakfield Street, Kelty, KY4 0BU



Approximate Floor Area
615 sq. ft
(57.15 sq. m)



Approx. Gross Internal Floor Area 615 sq. ft / 57.15 sq. m
Illustration for identification purposes only, measurements approximate, not to scale. Copyright



SOLICITORS | PROPERTY

33 East Port, Dunfermline, Fife, KY12 7JE

Tel: 01383 620222 Fax: 01383 621213

www.morganlaw.co.uk



espc

rightmove

Zoopa.co.uk

onTheMarket.com

s1homes.com



AGENTS NOTE These particulars do not form part of any contract and the statements or plans contained herein are not warranted nor to scale. Approximate measurements have been taken by electronic device at the widest point. Services and appliances have not been tested for efficiency or safety and no warranty is given as to their compliance with any Regulations. No movable items will be included in the sale.