

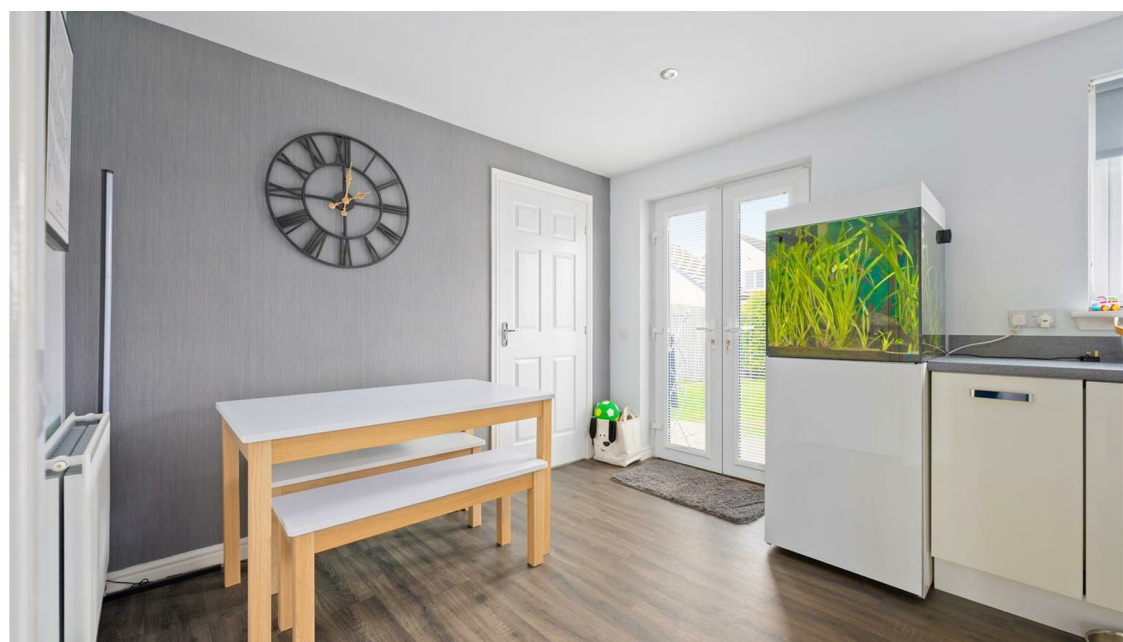
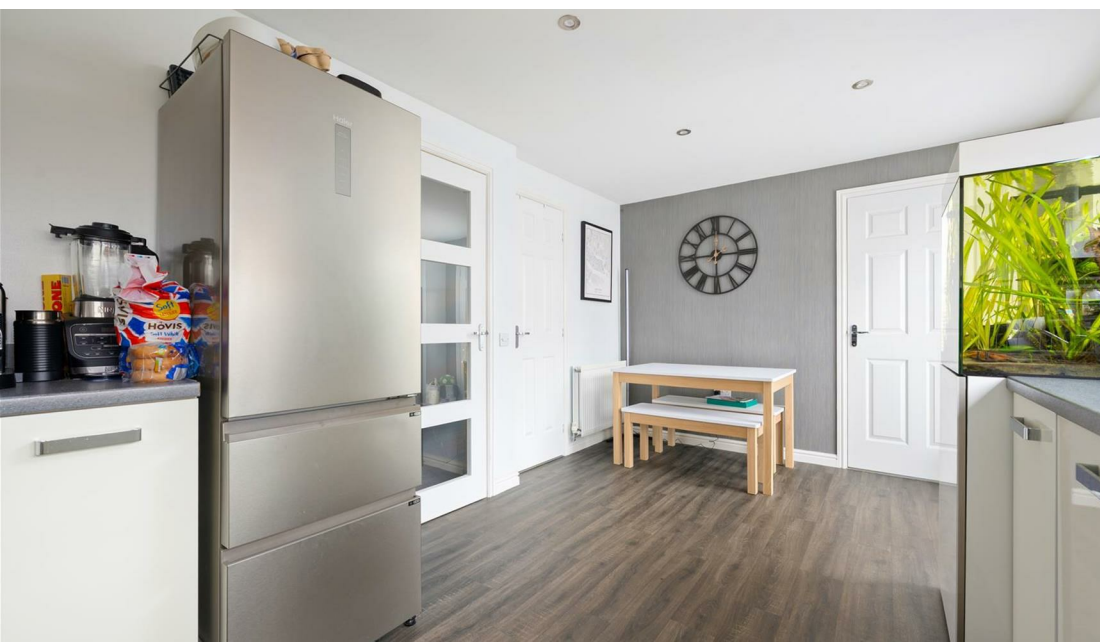
13 Roe Deer Place, Dunfermline, KY11 8UR
Offers Over £295,000

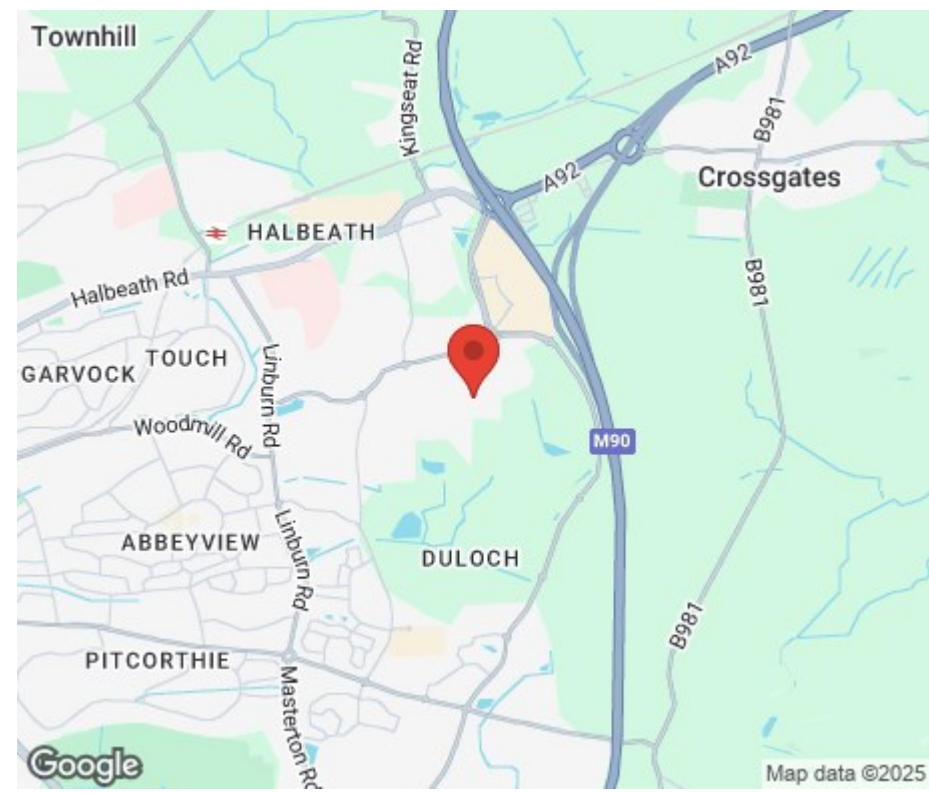






Modern detached villa with excellent commuter links to Edinburgh and the Fife Circle. This property is a stylish and contemporary home occupying a generous plot which is fully enclosed providing a child and pet safe environment with feature summerhouse and grounds that are easy to maintain. The accommodation is well presented and briefly comprises entrance vestibule, living room and dining kitchen with separate utility room and w.c facilities. On the the upper level there are four bedrooms with master en-suite and family bathroom. Access to attic. Driveway leads to single garage and there is ample visitors parking. Gas central heating and double glazing throughout.





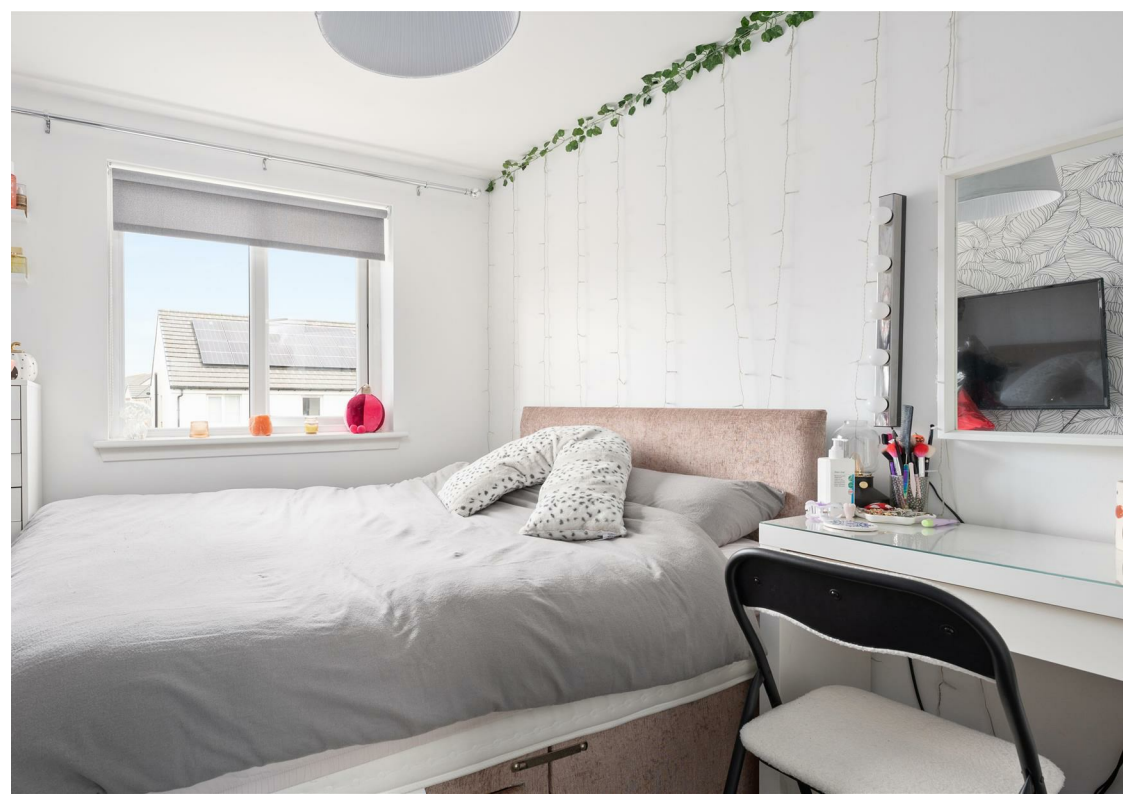
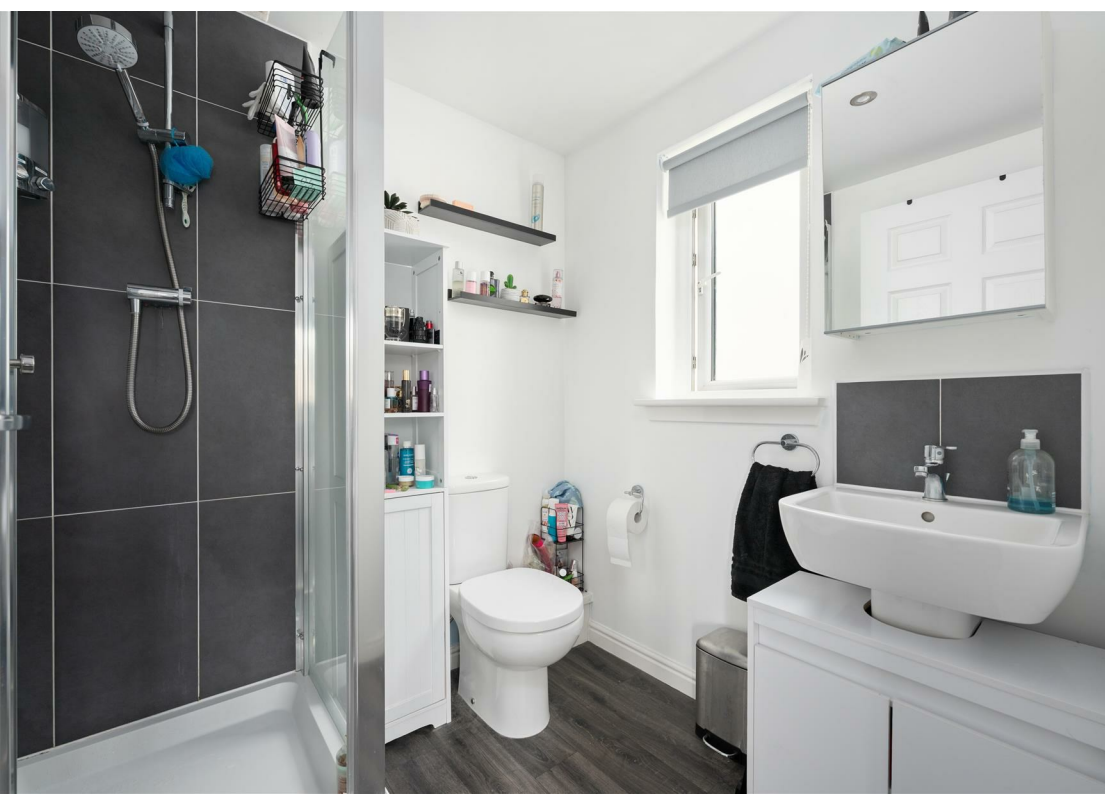
LOCATION

The ancient capital of Dunfermline won its bid to have official city status in May 2022, as part of the civic honour's competition to celebrate the Queen's platinum jubilee. The City of Dunfermline is of considerable historic interest and is the resting place of King Robert the Bruce. Carnegie's Birthplace museum, the Abbey and Abbot House reflect the historic interest of the city, whilst recent developments have seen Dunfermline move into the modern era with Carnegie Museum and Library. Dunfermline is located approximately five miles from the Forth bridges and is therefore particularly popular with commuters to Edinburgh and many parts of the central belt with easy access to the M90 motorway with its direct links to Edinburgh, Perth and Dundee and across the Kincardine Bridge by way of motorways to Stirling, Glasgow and the West. It benefits from a full range of shops, social and leisure facilities and educational establishments. The local railway stations provide a regular service to Edinburgh with intercity links to other parts of the UK. There are regular and convenient bus services both local and national.

EXTRAS INC.IN SALE/AGENTS NOTE

All floor coverings, blinds, bathroom and light fittings together with integrated appliances and summerhouse.

From 1st February 2022, residential properties in Scotland are required by law to have installed a system of inter-linked smoke alarms, carbon monoxide detectors and heat detectors (the "inter-linked system"). No warranty is given that any interlinked system has been installed in this property and interested parties should make their own enquiries.







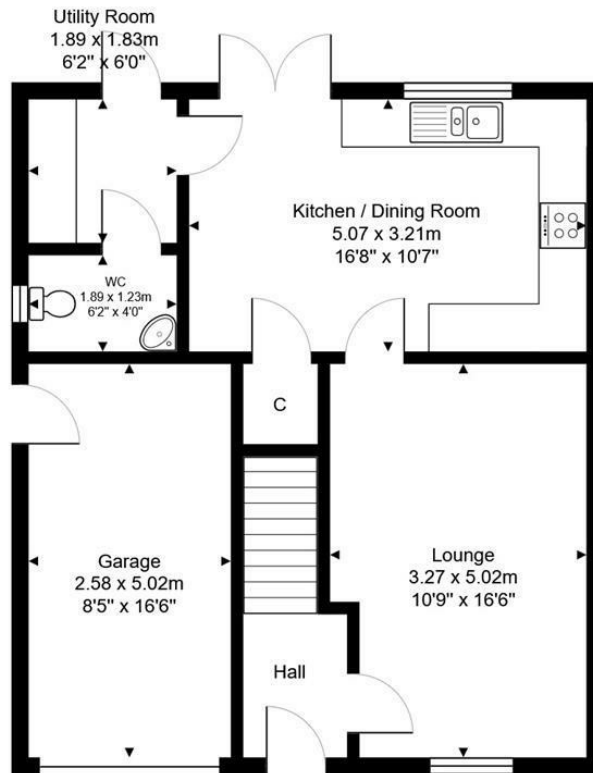


13 Roe Deer Place, Dunfermline, KY11 8UR

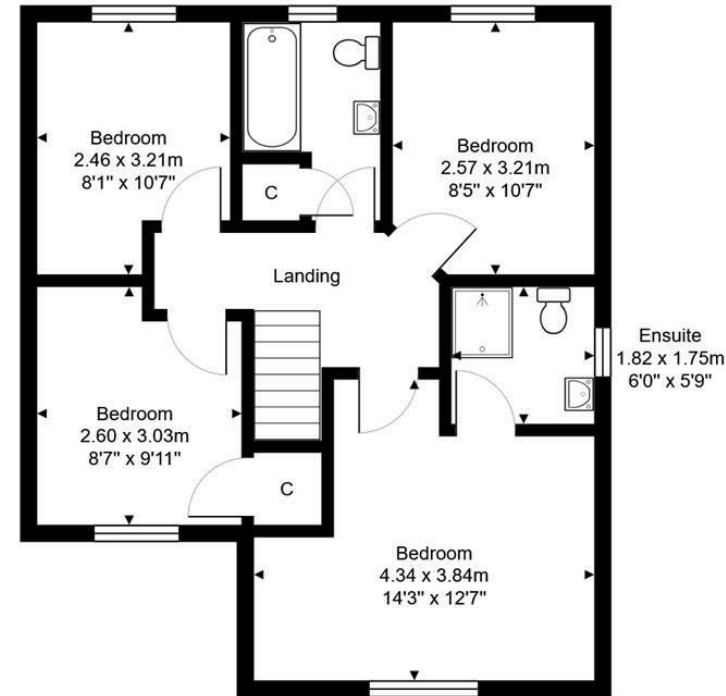
Total Area: 113.9 m² ... 1225 ft²



All measurements are approximate and for display purposes only



Ground Floor



1st Floor



SOLICITORS | PROPERTY

33 East Port, Dunfermline, Fife, KY12 7JE

Tel: 01383 620222 Fax: 01383 621213

www.morganlaw.co.uk



espc

rightmove

Zoopla.co.uk

onTheMarket.com

s1homes.com



AGENTS NOTE These particulars do not form part of any contract and the statements or plans contained herein are not warranted nor to scale. Approximate measurements have been taken by electronic device at the widest point. Services and appliances have not been tested for efficiency or safety and no warranty is given as to their compliance with any Regulations. No movable items will be included in the sale.