



24c Hill Street, Dunfermline, KY12 0QR
Offers Over £80,000







Ideal first time purchase in nice location, this charming first floor traditional garden apartment is a short walk to the train station and all local amenities. The property is freshly decorated and early entry is available. The subjects briefly comprise entrance vestibule, lounge, kitchen, double bedroom with storage and bathroom. The property is double glazed with gas central heating and is equipped for a buy to let, if an investor is interested. The outdoor communal areas are well maintained with shared drying green and bin area. Ample on street parking.





LOCATION

The Royal Burgh of Dunfermline is of considerable historic interest and is the resting place of King Robert the Bruce. Carnegie's Birthplace museum, the Abbey and Abbot House reflect the historic interest of the town, whilst recent developments have seen Dunfermline move into the modern era with Carnegie Museum and Library. Dunfermline is located approximately five miles from the Forth bridges and is therefore particularly popular with commuters to Edinburgh and many parts of the central belt with easy access to the M90 motorway with its direct links to Edinburgh, Perth and Dundee and across the Kincardine Bridge by way of motorways to Stirling, Glasgow and the West. It benefits from a full range of shops, social and leisure facilities and educational establishments associated with a modern town. The local railway stations provide a regular service to Edinburgh with intercity links to other parts of the UK. There are regular and convenient bus services both local and national.

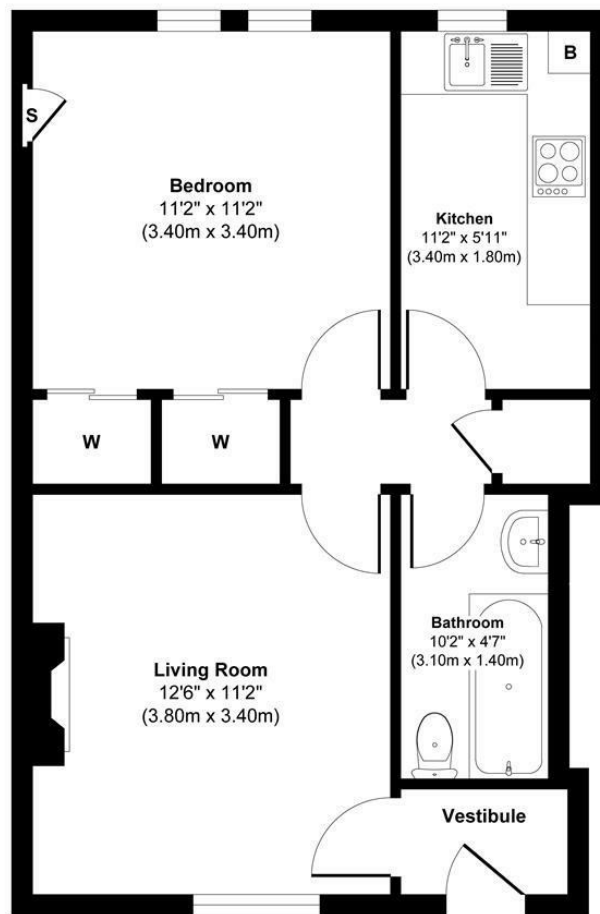
EXTRAS INC IN SALE / AGENTS NOTE

All floor coverings, bathroom fittings, light fittings together with integrated appliances.

From 1st February 2022, residential properties in Scotland are required by law to have installed a system of inter-linked smoke alarms, carbon monoxide detectors and heat detectors (the "inter-linked system"). No warranty is given that any interlinked system has been installed in this property and interested parties should make their own enquiries.







First Floor



Approx. Gross Internal Floor Area 453 sq. ft / 42.14 sq. m

This floor plan is for illustrative and marketing purposes only and is to be used as a guide only. No details are guaranteed on measurements, floor areas, or orientation and do not form any agreement. No liability is taken for error, omission or misstatement. A party must rely upon its own inspection(s). Created by 9AM Media

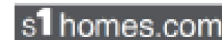


SOLICITORS | PROPERTY

33 East Port, Dunfermline, Fife, KY12 7JE

Tel: 01383 620222 Fax: 01383 621213

www.morganlaw.co.uk



AGENTS NOTE These particulars do not form part of any contract and the statements or plans contained herein are not warranted nor to scale. Approximate measurements have been taken by electronic device at the widest point. Services and appliances have not been tested for efficiency or safety and no warranty is given as to their compliance with any Regulations. No movable items will be included in the sale.