



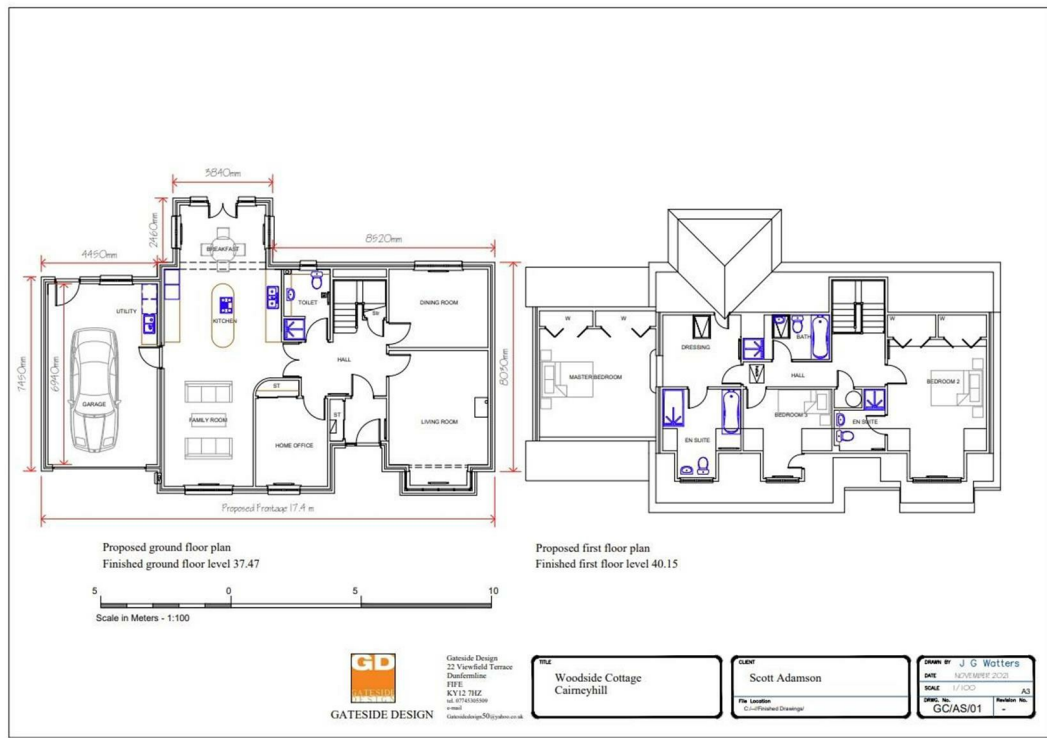
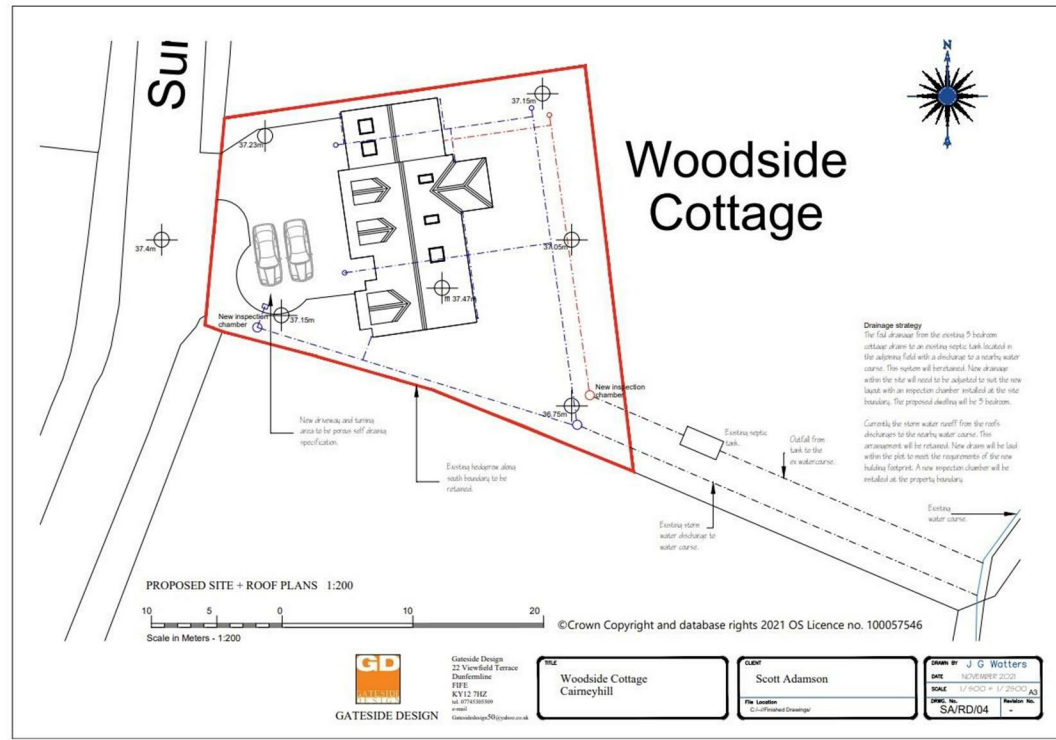
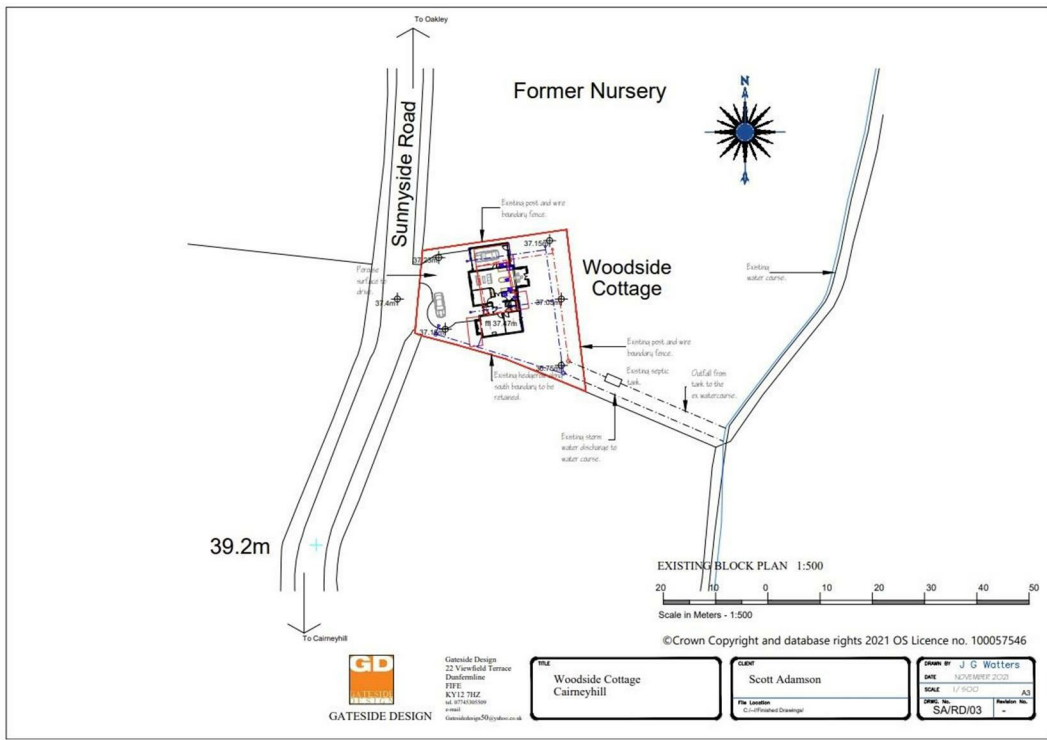
Plot at Woodside Cottage, Sunnyside Road, Cairneyhill, KY12 8HE
Fixed Price £99,950





An exciting development opportunity with Full Planning Permission for a detached executive home. The location of this building plot is idyllic with countryside views in a semi rural location yet within easy access to the M90 motorway network and surrounding West Fife villages. Planning Permission in Full has been approved for a two storey detached executive dwellinghouse comprising three double bedrooms, two en-suites, dressing room, family bathroom, three public rooms and breakfasting kitchen/family room/utility. All details can be obtained via Fife Council Website Ref 22/00293/FULL or within our offices.







SOLICITORS | PROPERTY

33 East Port, Dunfermline, Fife, KY12 7JE

Tel: 01383 620222 Fax: 01383 621213

www.morganlaw.co.uk



espc

rightmove

Zoopa.co.uk

onTheMarket.com

s1homes.com

naaa | propertymark

PROTECTED

AGENTS NOTE These particulars do not form part of any contract and the statements or plans contained herein are not warranted nor to scale. Approximate measurements have been taken by electronic device at the widest point. Services and appliances have not been tested for efficiency or safety and no warranty is given as to their compliance with any Regulations. No movable items will be included in the sale.