



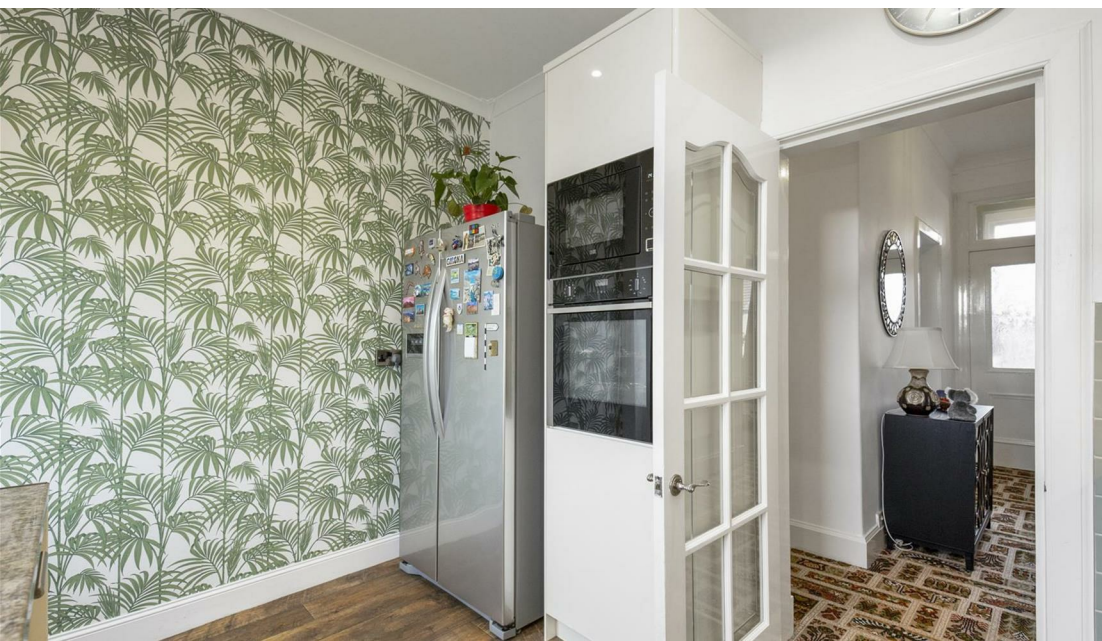
171 Stenhouse Street, Cowdenbeath, KY4 9DG  
Offers In The Region £215,000







Excellent opportunity to acquire this generous detached bungalow situated in the popular town of Cowdenbeath. The property has been well maintained and is a credit to the current owners. The accommodation is well presented and briefly comprises entrance vestibule, reception hall, lounge, kitchen, utility, two double bedrooms and bathroom. Access to attic. The property is double glazed with gas central heating. The gardens to front and rear are well maintained providing a child and pet safe environment. Driveway leads to single car garage with electric door. Essential viewing.





## LOCATION

Cowdenbeath is located approximately five miles northeast of Dunfermline. The town boasts a good selection of shops, retail park, modern leisure centre, golf course and further recreational facilities. The primary and secondary schools are easily accessible. It has its own railway station connecting with both Dunfermline and Edinburgh. The town has easy access to the M90 and A92 motorway network, which makes commuting particularly easy.

## EXTRAS INC IN SALE / AGENTS NOTE

All floor coverings, blinds, bathroom and light fittings together with integrated appliances.

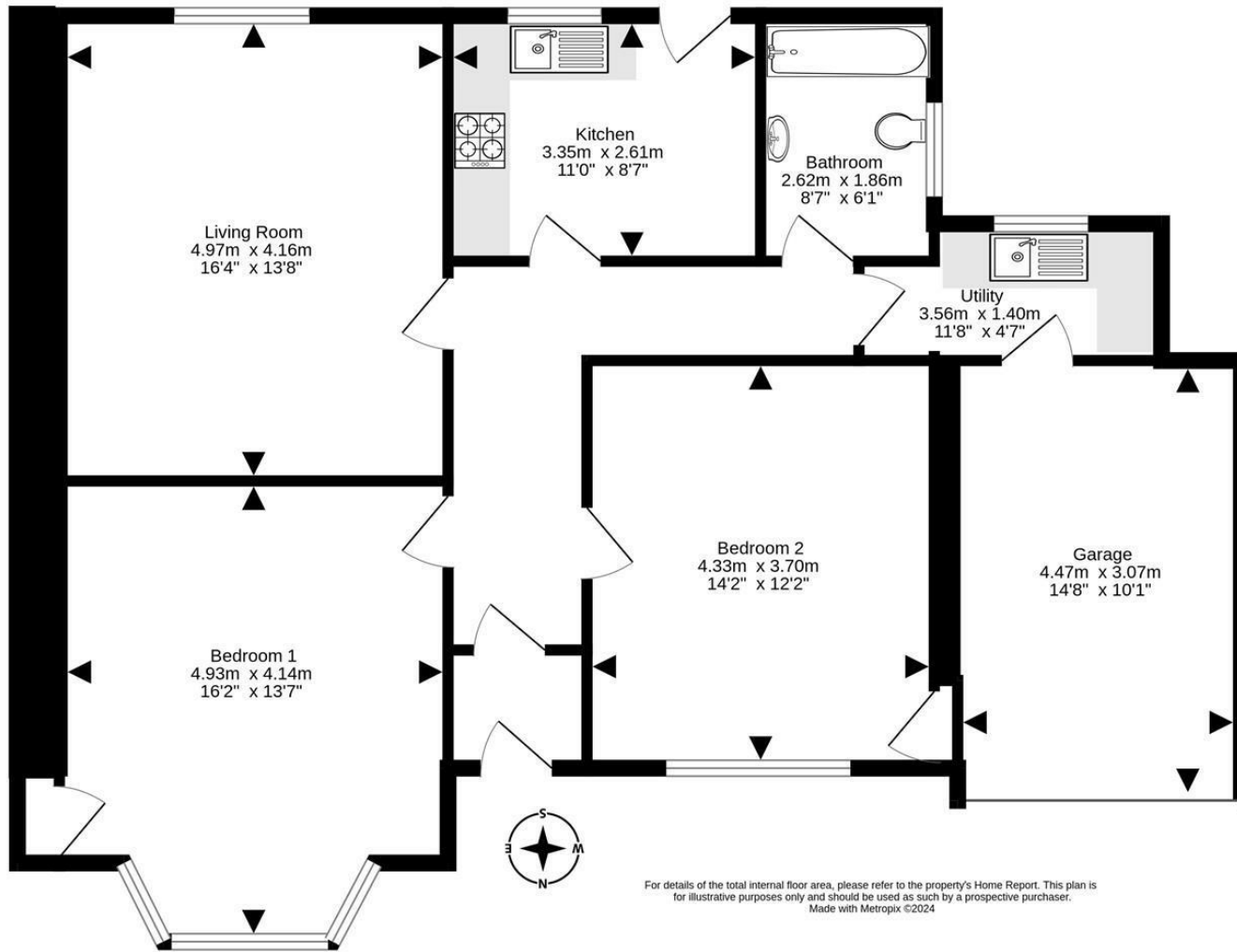
From 1st February 2022, residential properties in Scotland are required by law to have installed a system of inter-linked smoke alarms, carbon monoxide detectors and heat detectors (the "inter-linked system"). No warranty is given that any interlinked system has been installed in this property and interested parties should make their own enquiries.











For details of the total internal floor area, please refer to the property's Home Report. This plan is for illustrative purposes only and should be used as such by a prospective purchaser. Made with Metropix ©2024



SOLICITORS | PROPERTY

33 East Port, Dunfermline, Fife, KY12 7JE

Tel: 01383 620222 Fax: 01383 621213

[www.morganlaw.co.uk](http://www.morganlaw.co.uk)



[s1homes.com](http://s1homes.com)

[rightmove](http://rightmove.com)

[Zoopla.co.uk](http://Zoopla.co.uk)

[onTheMarket.com](http://onTheMarket.com)

[naei | propertymark](http://naei.propertymark.com)

PROTECTED

AGENTS NOTE These particulars do not form part of any contract and the statements or plans contained herein are not warranted nor to scale. Approximate measurements have been taken by electronic device at the widest point. Services and appliances have not been tested for efficiency or safety and no warranty is given as to their compliance with any Regulations. No movable items will be included in the sale.