

**RUSH  
WITT &  
WILSON**



**43 Station Road, Romney Marsh, Kent TN29 9ED  
Guide Price £400,000**



Rush Witt & Wilson are delighted to offer this wonderful four bedroom home which has been sympathetically restored by the current owners offering characterful features throughout and is believed to date back to 1550 and was previously known as 'The Red Lion Inn'.

The living space is set across three floors and has a large cellar, garage with driveway and garden to two sides. Downstairs you will find the living room along with office/bedroom four. bathroom, door to cellar and kitchen dining room. The first floor is home to both bedroom 's one and two with the top floor being bedroom three with on-suite shower room.

This property is an absolute delight with history flowing through it. Viewings are highly recommended.

**Living Room**

15'3" x 14'2" (4.656 x 4.331)

Spacious living space with exposed floorboards, picture window overlooking garden and feature exposed brick fireplace

**Kitchen/Dining Room**

13'8" x 12'10" (4.181 x 3.918)

Fitted with a range of light-coloured base and eye level units. Door to front

**Bedroom 4/office**

11'1" x 7'0" (3.387 x 2.146)

Exposed floorboards & picture window overlooking the garden.

**Bedroom one**

14'8" x 12'2" (4.494 x 3.726)

Exposed floorboards, decorative feature fireplace and large window overlooking garden.

**Bedroom Two**

9'11" x 8'9" (3.023 x 2.684)

Exposed floorboards, storage cupboard, window overlooking garden.

**Bedroom Three**

17'3" x 8'3" (5.282 x 2.527)

Stunning loft room with beams set across the ceiling, skylight with roof top views, en-suite shower room.

**Cellar**

Spacious cellar (historically used for storage and kegs for The Red Lion)

**Bathroom**

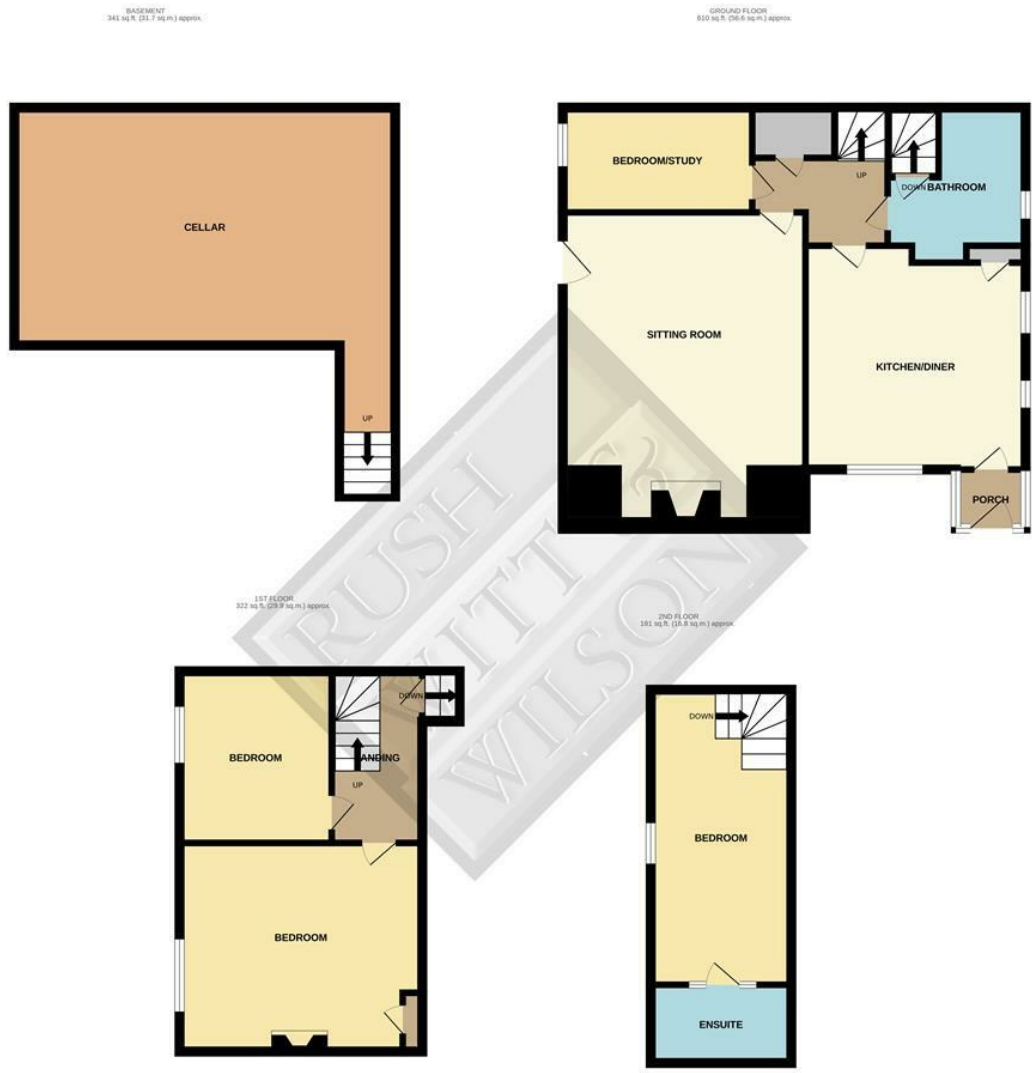
Free standing bathtub, w.c, wash hand basin and exposed timbers

**Agents Notes**

None of the services or appliances mentioned in these sale particulars have been tested.

It should also be noted that measurements quoted are given for guidance only and are approximate and should not be relied upon for any other purpose.

Council Tax Band - B



**TOTAL FLOOR AREA : 1453 sq.ft. (135.0 sq.m.) approx.**

Whilst every attempt has been made to ensure the accuracy of the floorplan contained here, measurements of doors, windows, rooms and any other items are approximate and no responsibility is taken for any error, omission or mis-statement. This plan is for illustrative purposes only and should be used as such by any prospective purchaser. The services, systems and appliances shown have not been tested and no guarantee as to their operability or efficiency can be given.  
Made with Metropix ©2023





