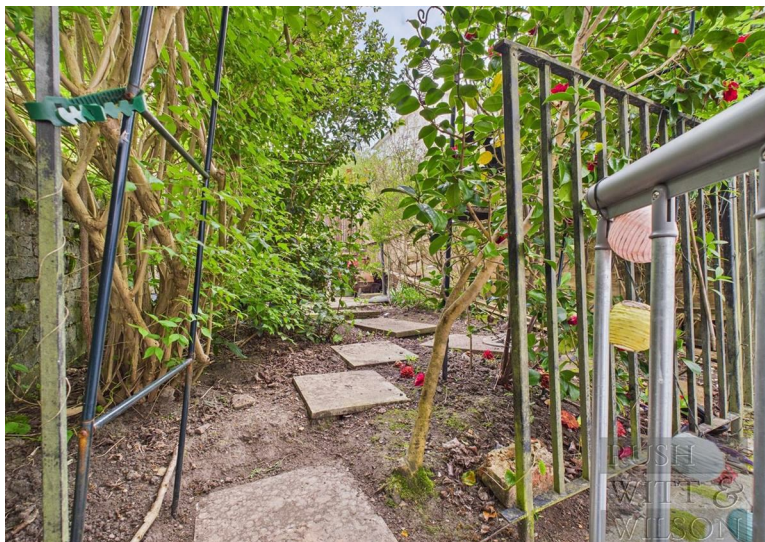


**RUSH
WITT &
WILSON**



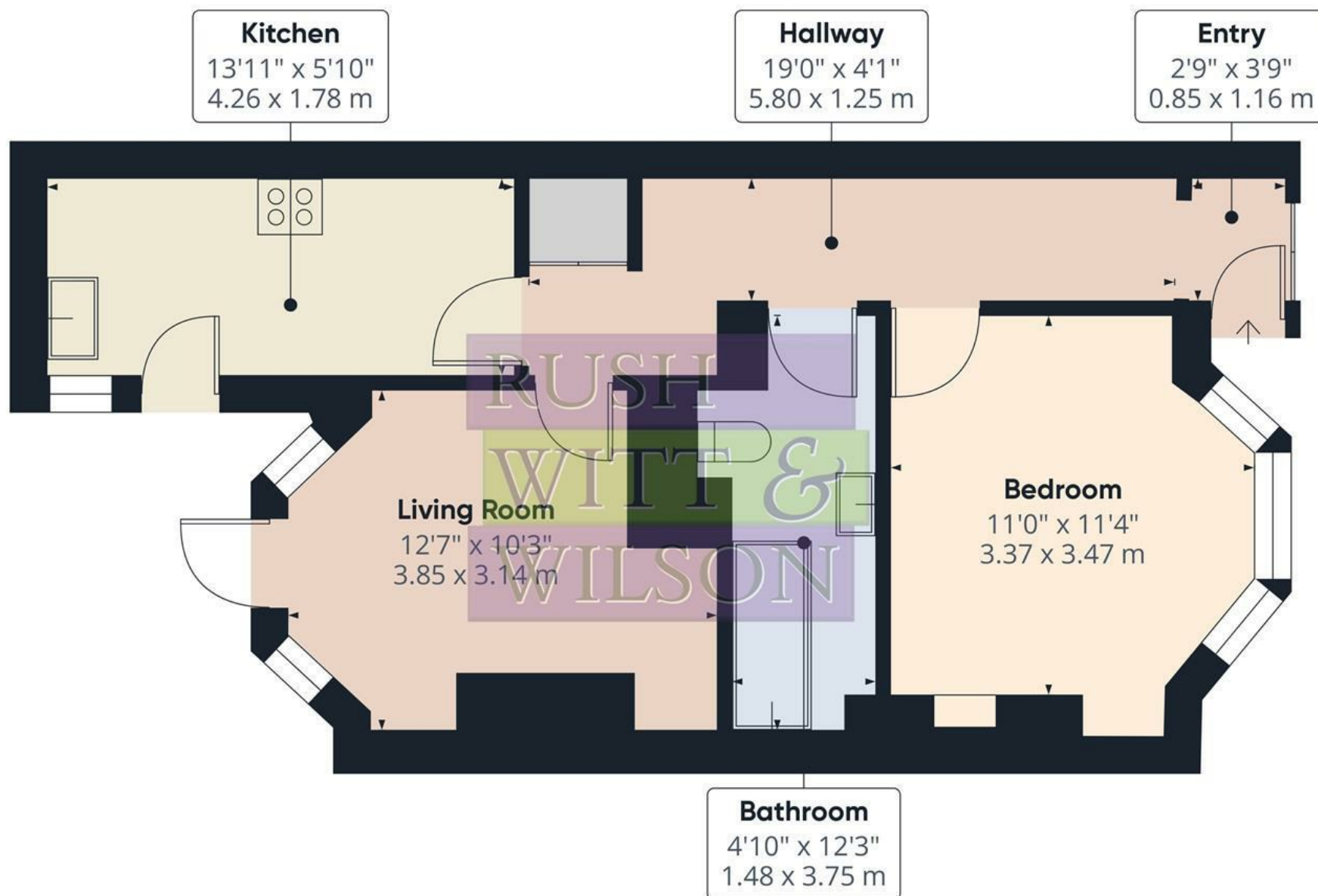
Flat 1, 31 Southwater Road, St. Leonards-On-Sea, TN37 6JR
Asking Price £175,000

*****SOLD WITH NEW LEASE***** Nestled on Southwater Road in the charming area of St. Leonards-On-Sea, this delightful lower ground floor apartment offers a perfect blend of comfort and convenience. With its own private entrance, this one-bedroom flat is an ideal retreat for individuals or couples seeking a tranquil living space. Upon entering, you will find a well-proportioned reception room to the rear that provides a welcoming atmosphere, perfect for relaxation or entertaining guests. The apartment features a thoughtfully designed bedroom, ensuring a peaceful night's sleep. The bathroom is modern and functional, catering to all your daily needs. Some of the standout features of this property includes the outside a lovely courtyard perfect for enjoying a morning coffee or an evening glass of wine, or the beautiful oak flooring. It is also worth noting that the Akita shed in the garden will be staying! Additionally, semi-spiral stairs lead you to an upper garden area, offering a delightful spot to soak up the sun or tend to your plants. The interior of the apartment boasts neutral decoration throughout, allowing you to easily personalise the space to your taste. This property is not only a comfortable home but also a wonderful opportunity to enjoy the vibrant community of St. Leonards-On-Sea, with its picturesque surroundings and local amenities. In summary, this charming one-bedroom garden apartment on Southwater Road is a rare find, combining private outdoor space with a cosy interior. It is an excellent choice for those looking to embrace a relaxed lifestyle in a beautiful coastal setting.









Approximate total area⁽¹⁾

465.11 ft²

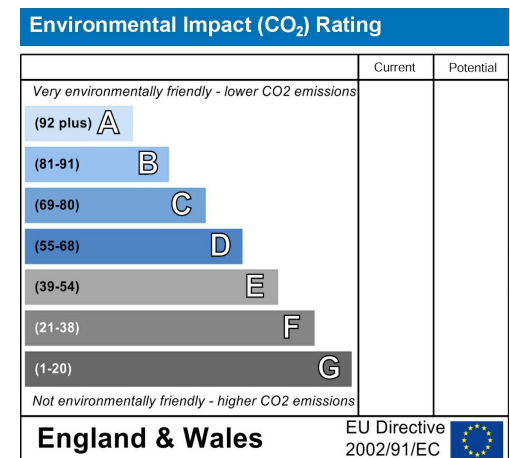
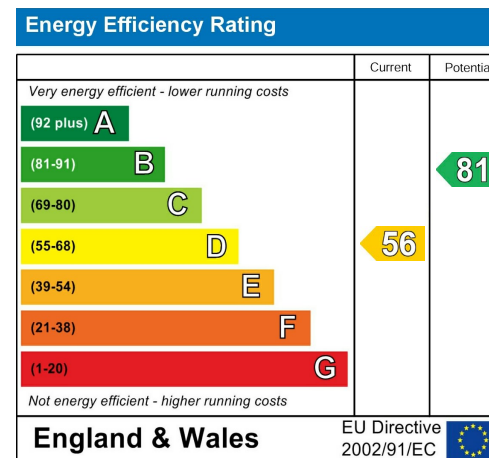
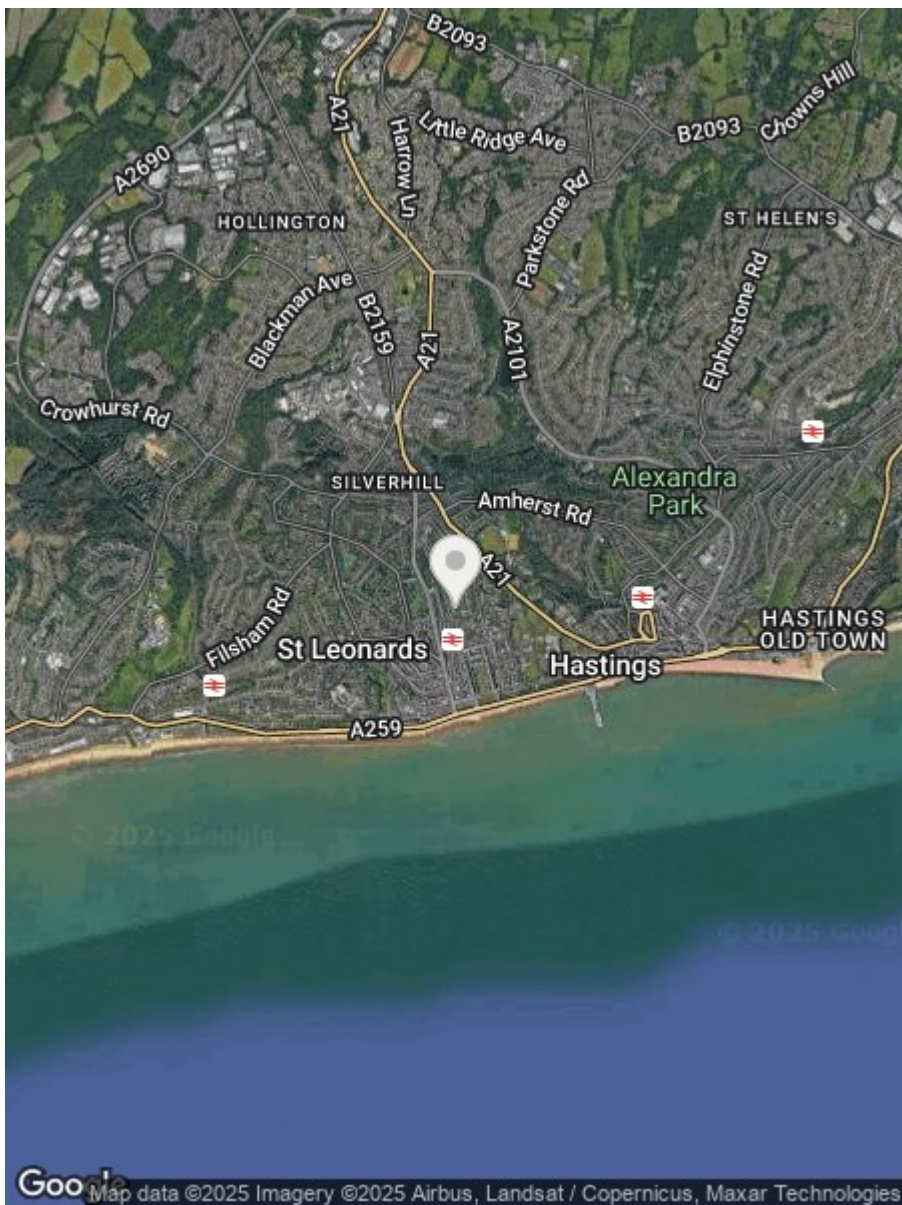
43.21 m²

(1) Excluding balconies and terraces

While every attempt has been made to ensure accuracy, all measurements are approximate, not to scale. This floor plan is for illustrative purposes only.

Calculations are based on RICS IPMS 3C standard.

GIRAFFE360



**RUSH
WITT &
WILSON**

**Residential Estate Agents
Lettings & Property Management**



**Rother House Havelock Road
Hastings
East Sussex
TN34 1BP
Tel: 01424 442443
hastings@rushwittwilson.co.uk
www.rushwittwilson.co.uk**