

**RUSH
WITT &
WILSON**

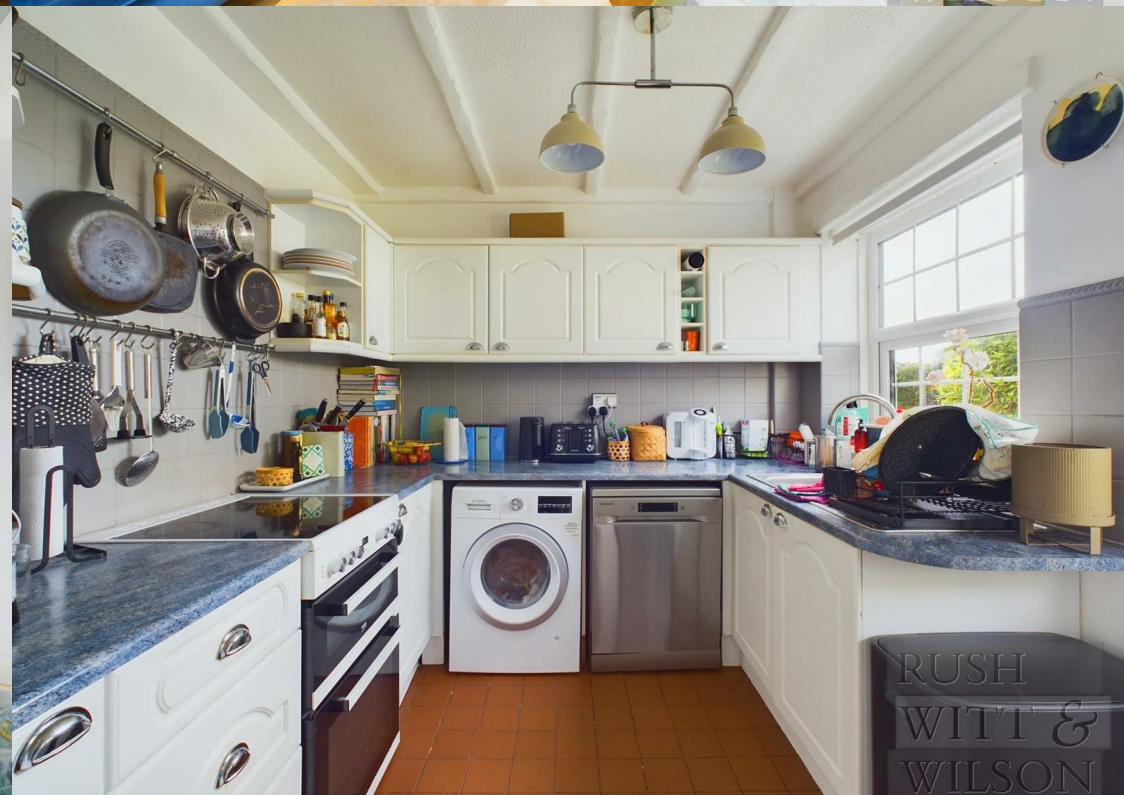


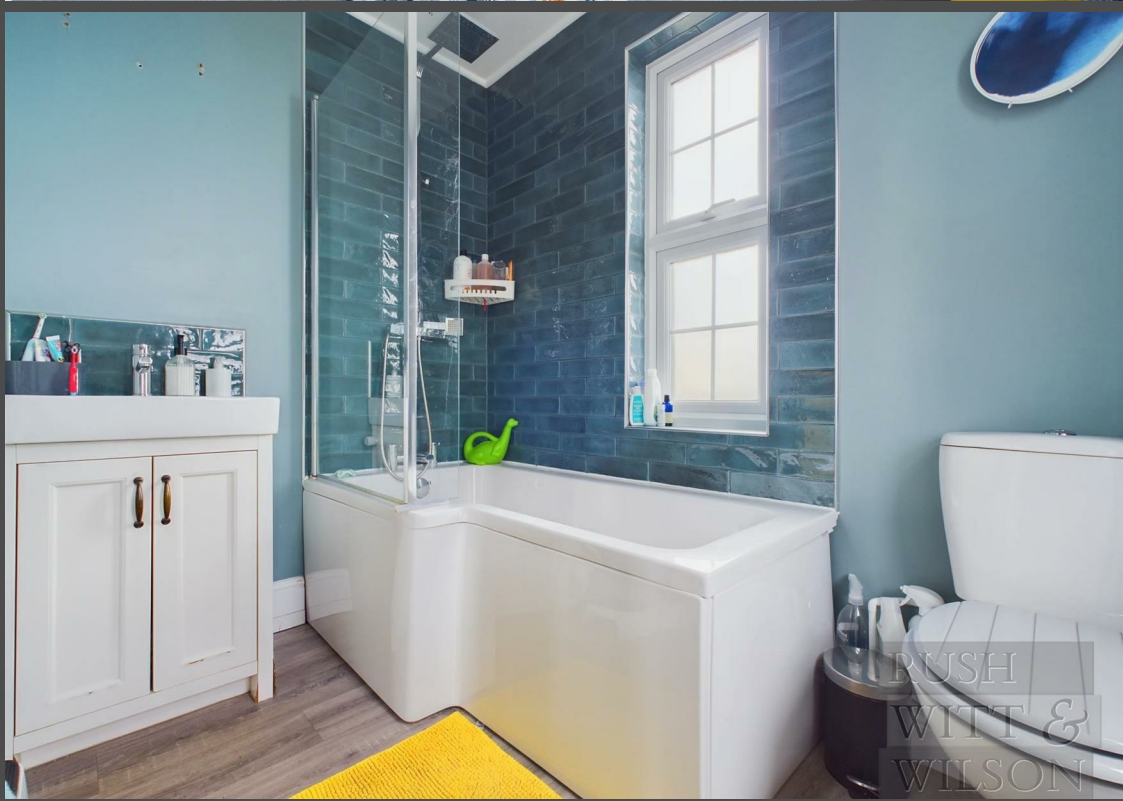
RUSH
WITT &

13 Eversley Crescent, St. Leonards-On-Sea, TN37 6QF
£325,000

This stunning FOUR BEDROOM SEMI DETACHED family home, nestled in the sought-after Silverhill Village, is just a short stroll from the scenic Alexandra Park. Perfectly positioned near top-rated schools, local shops, and excellent transport links, it offers convenience and charm in equal measure. The home spans three storeys, with the heart of the house being the bright and expansive open-plan living area. This inviting space is perfect for both relaxing and entertaining, with plenty of room for a full dining table to gather around, making it ideal for family life. The modern, separate kitchen is fitted with sleek units and ample storage, and it opens out to the beautiful rear garden. On the first floor, you'll find three well-sized bedrooms, including two generous doubles, alongside a chic family bathroom featuring a bath, shower, and screen. The top-floor fourth bedroom/study is a peaceful retreat, offering stunning far-reaching views. Outside, the garden is a real gem, with a patio area perfect for al fresco dining, followed by a lush lawn - an idyllic setting for family fun and relaxation. We look forward to showing you around this home.

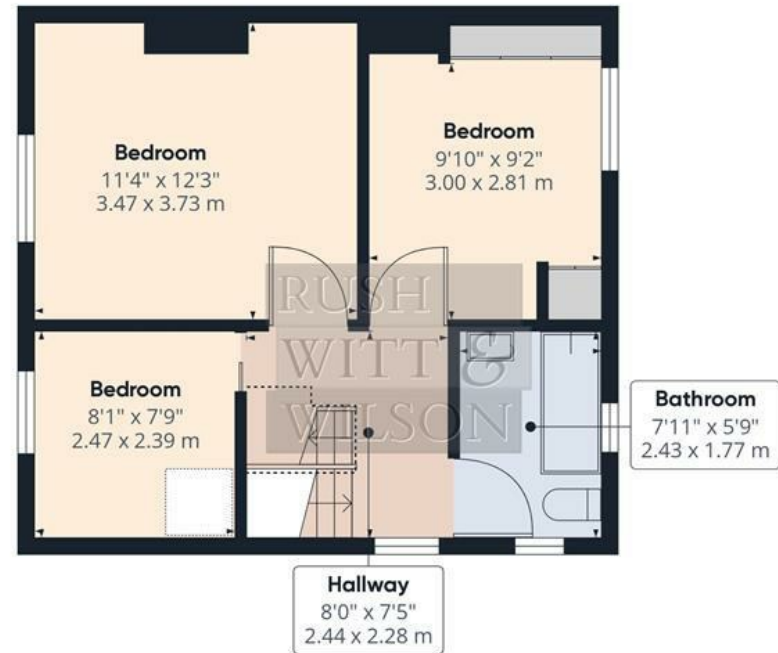




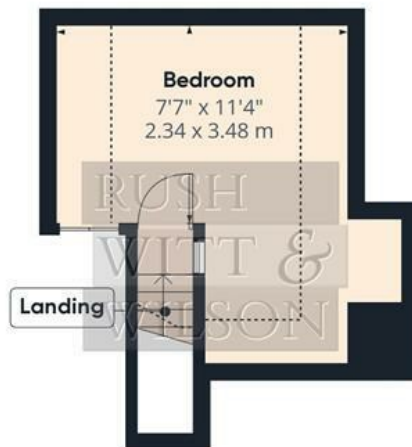




Floor 0



Floor 1



Floor 2

Approximate total area⁽¹⁾

925.48 ft²
85.98 m²

Reduced headroom

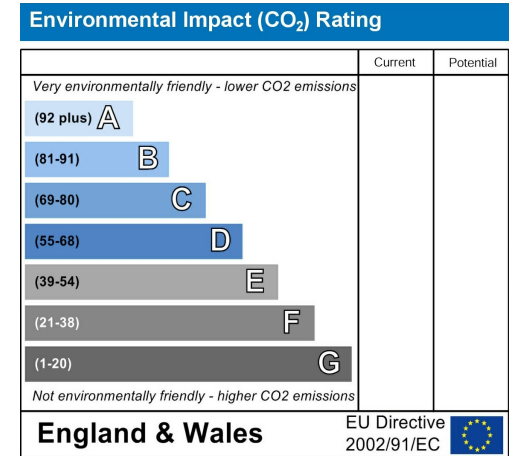
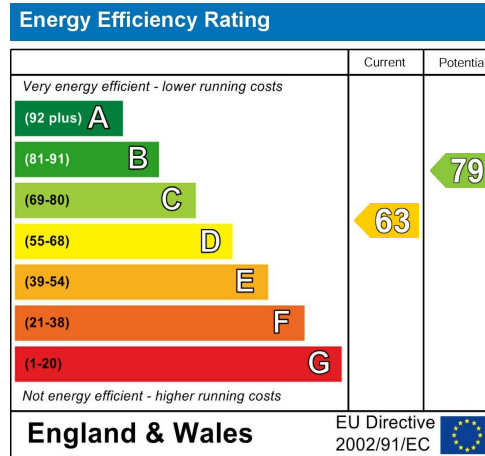
67.7 ft²
6.29 m²

(1) Excluding balconies and terraces

Reduced headroom
..... Below 5 ft/1.5 m

While every attempt has been made to ensure accuracy, all measurements are approximate, not to scale. This floor plan is for illustrative purposes only.

Calculations are based on RICS IPMS 3C standard.



**RUSH
WITT &
WILSON**

Residential Estate Agents
Lettings & Property Management



Rother House Havelock Road
Hastings
East Sussex
TN34 1BP
Tel: 01424 442443
hastings@rushwittwilson.co.uk
www.rushwittwilson.co.uk