

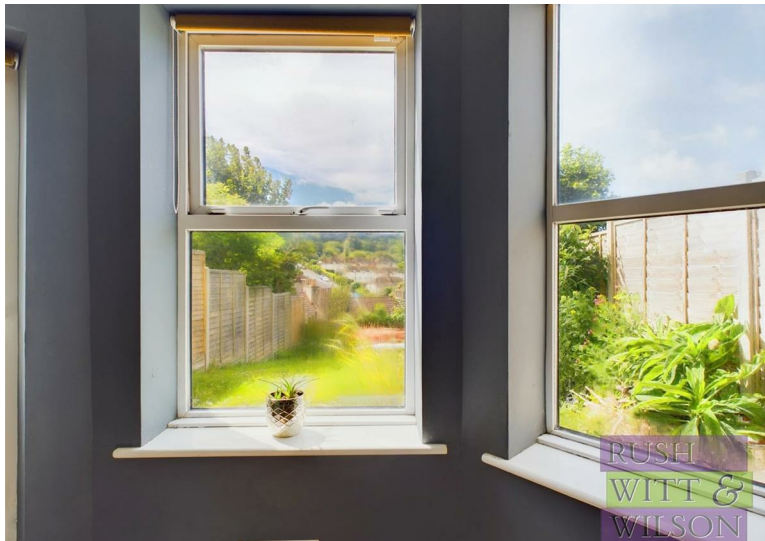
**RUSH
WITT &
WILSON**



**RUSH
WITT &**

**Flat 1 26 Godwin Road, Hastings, East Sussex TN35 5JR
Offers In Excess Of £200,000**

Nestled in the charming Godwin Road, Hastings, this is a delightful two bedroom garden apartment. Situated in the lower Clive Vale area, just a stone's throw away from the historic Hastings Old Town, this property boasts a unique blend of convenience and tranquillity. As you step into this lower ground floor flat, The property features a cosy bay fronted lounge, perfect for relaxing or entertaining guests, with modern bathroom. The kitchen is ideal for whipping up delicious meals, and the two bedrooms offer comfort and privacy. One of the standout features of this apartment is its very own enclosed rear garden, providing a peaceful retreat with picturesque views of the East Hill in the distance. Imagine enjoying your morning coffee in this serene setting or hosting a summer barbecue with friends and family. Whether you're a first-time buyer, a small family, or looking for a lucrative investment opportunity, this flat conversion is sure to captivate you. With no onward chain, the path to making this charming apartment your own is clear.





RUSH
WITT &
WILSON



RUSH
WITT &
WILSON



RUSH
WITT &
WILSON



RUSH
WITT &
WILSON



RUSH
WITT &
WILSON



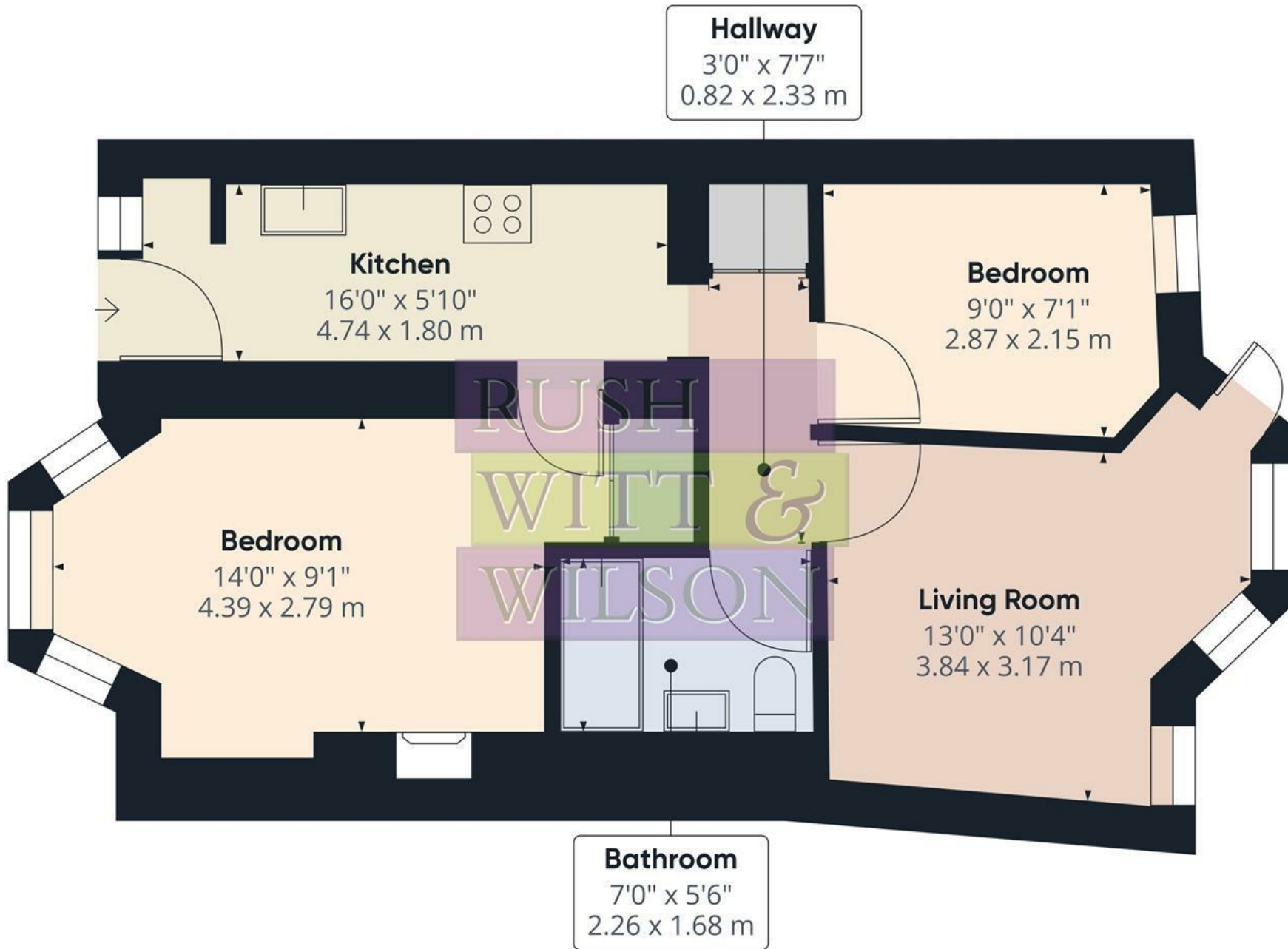
RUSH
WITT &
WILSON



RUSH
WITT &
WILSON



RUSH
WITT &
WILSON



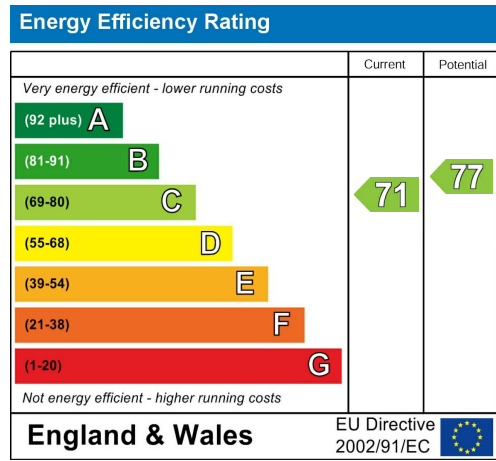
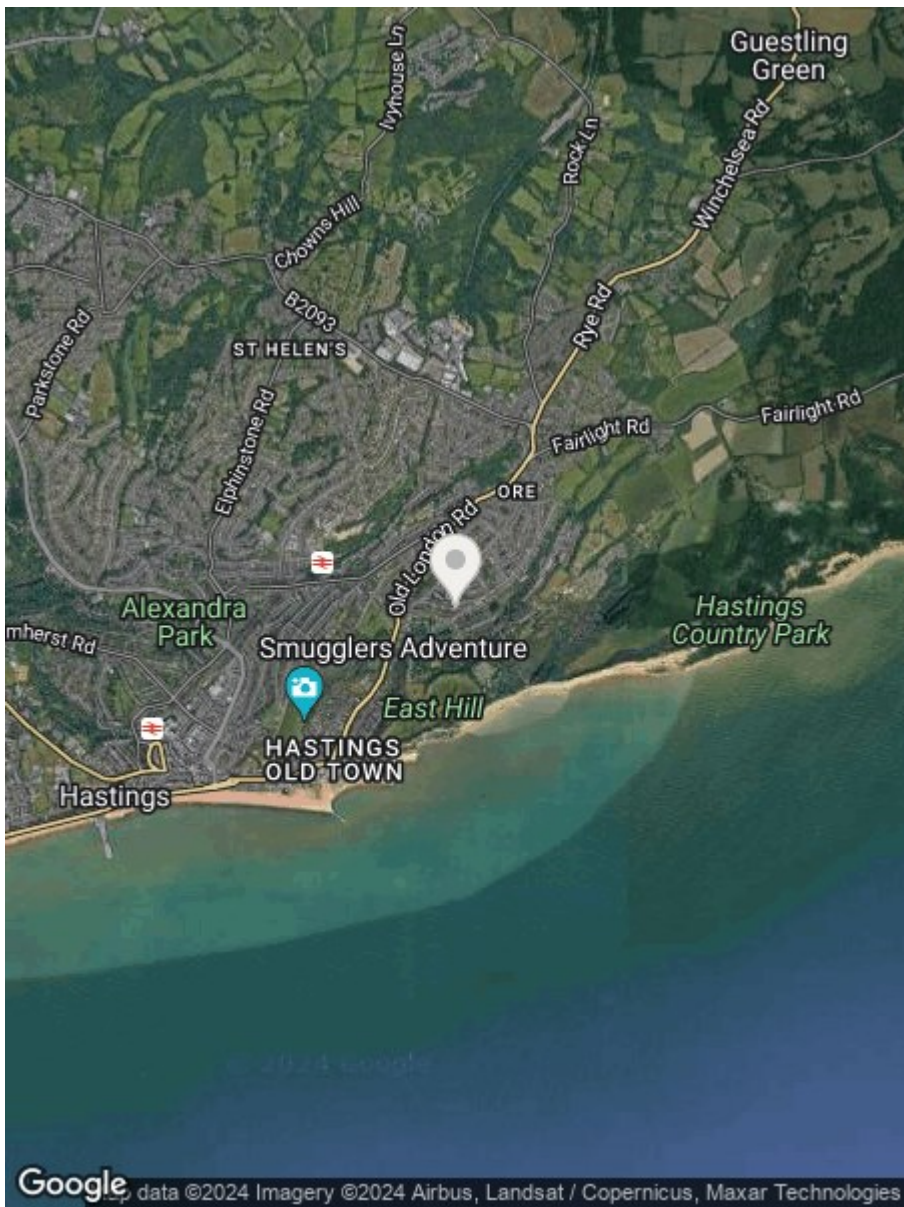
Approximate total area⁽¹⁾

514.08 ft²
47.76 m²

(1) Excluding balconies and terraces

While every attempt has been made to ensure accuracy, all measurements are approximate, not to scale. This floor plan is for illustrative purposes only.

GIRAFFE360



**RUSH
WITT &
WILSON**

**Residential Estate Agents
Lettings & Property Management**



**Rother House Havelock Road
Hastings
East Sussex
TN34 1BP
Tel: 01424 442443
hastings@rushwittwilson.co.uk
www.rushwittwilson.co.uk**