

RUSH  
WITT &  
WILSON



RUSH  
WITT &

**1b Bumptious Mansions 15 Warrior Square, St. Leonards-On-Sea, East Sussex  
TN37 6BA  
£250,000**

Welcome to this charming property located in the sought-after area of Warrior Square, St. Leonards-On-Sea. This delightful flat offers a perfect blend of character and modern living. The property has been beautifully refurbished to the highest of standards with bespoke fittings throughout. As you step into the property, you are greeted by a cosy reception room, ideal for relaxing or entertaining guests. The bedroom is spacious and provides a peaceful retreat at the end of a long day. The bathroom is well-appointed, offering convenience and comfort. Situated in a converted building, this property exudes character and charm, with a touch of history in every corner. The flat layout provides a sense of openness and flow, perfect for those seeking a comfortable living space. Warrior Square is known for its picturesque surroundings and vibrant community atmosphere. With local amenities, cafes, and shops just a stone's throw away, you'll have everything you need right at your doorstep. Don't miss the opportunity to make this lovely flat your new home. Whether you're a first-time buyer, downsizing, or looking for a weekend getaway, this property offers endless possibilities. Contact us today to arrange a viewing and experience the beauty of Warrior Square living.





RUSH  
WITT &  
WILSON



RUSH  
WITT &  
WILSON



RUSH  
WITT &  
WILSON



RUSH  
WITT &  
WILSON



RUSH  
WITT &  
WILSON



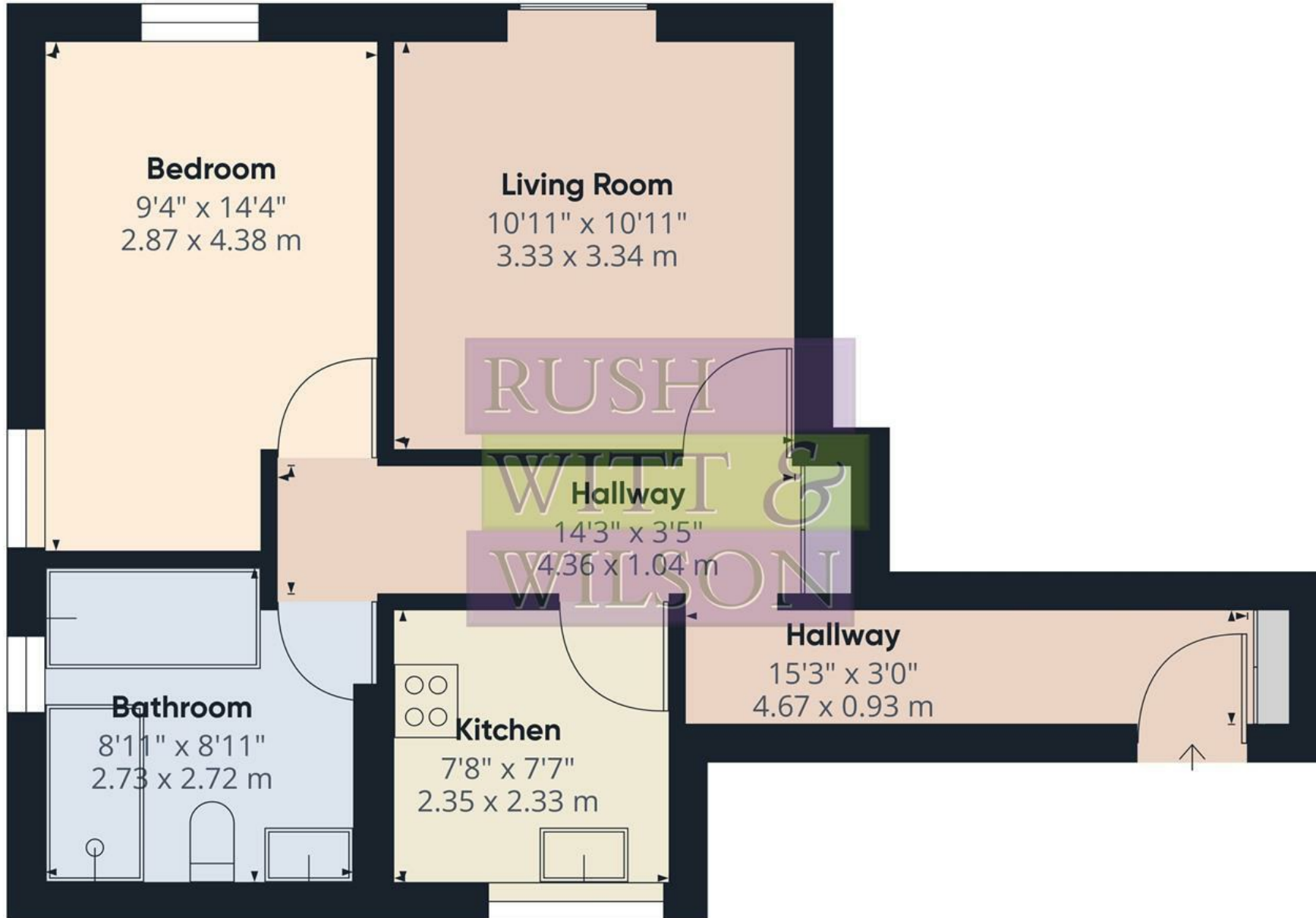
RUSH  
WITT &  
WILSON



RUSH  
WITT &  
WILSON



RUSH  
WITT &  
WILSON

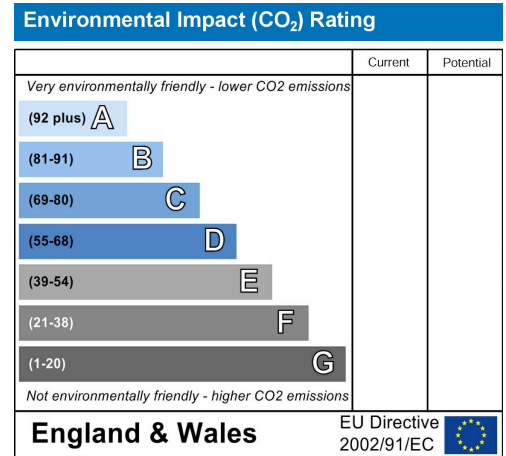
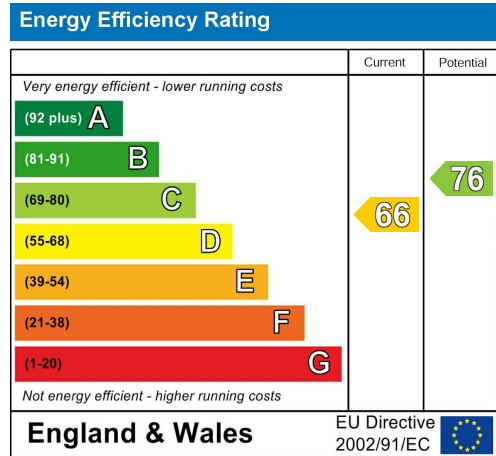
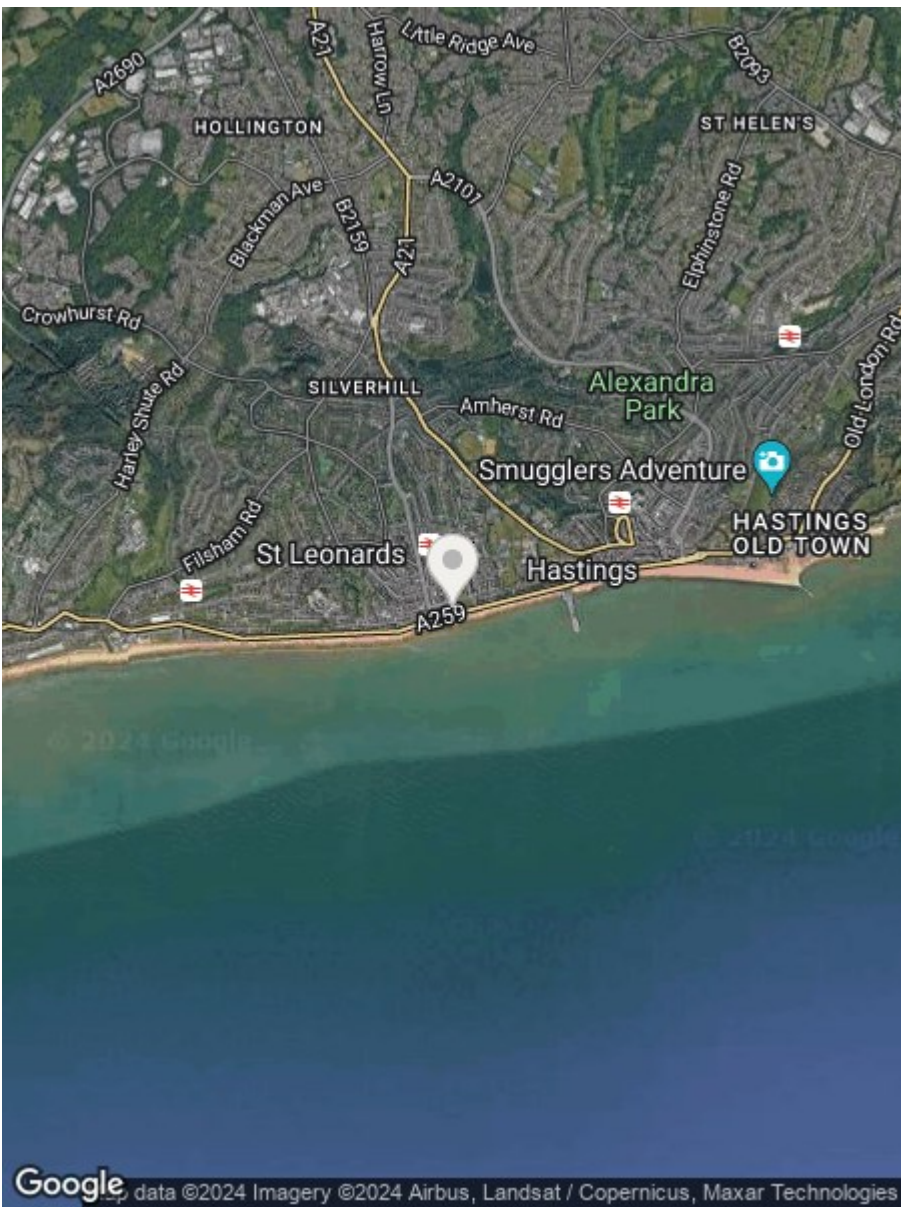


Approximate total area<sup>(1)</sup>  
497.38 ft<sup>2</sup>  
46.21 m<sup>2</sup>

(1) Excluding balconies and terraces

While every attempt has been made to ensure accuracy, all measurements are approximate, not to scale. This floor plan is for illustrative purposes only.

GIRAFFE 360



**RUSH  
WITT &  
WILSON**

**Residential Estate Agents  
Lettings & Property Management**



**Rother House Havelock Road  
Hastings  
East Sussex  
TN34 1BP  
Tel: 01424 442443  
hastings@rushwittwilson.co.uk  
www.rushwittwilson.co.uk**