

**RUSH
WITT &
WILSON**



**RUSH
WITT &**

26 Rymill Road, St. Leonards-On-Sea, TN38 9EF
Offers In Excess Of £200,000

Rush Witt & Wilson are pleased to welcome to the market this attractive **FIRST FLOOR TWO BEDROOM** apartment with its own area of **GARDEN** to the rear. Neatly positioned for access to local schools, shops and transport links. Accessed by a flight of steps to the side that lead up to the entrance door providing access to the hallway with all rooms located of this space. The living room/diner is located to the front aspect with the whole apartment benefitting from a **LIGHT & AIRY** feel throughout, it's been tastefully improved and maintained throughout by the current owners. The property includes **TWO BEDROOMS** both considered doubles and a kitchen with views towards the rear garden. Externally the property has access to its very own storage area as you walk through to the rear area of garden. Once you reach the garden, it has everything you could wish for in a garden and is an ideal space to put your feet up, relax and unwind in the upcoming warmer months. Included is a **BAR** area as well as storage sheds, with the garden offering a canvas to create your own perfect space. This home is ready for you to view now and we welcome your interest in viewing this property.







RUSH
WITT &
WILSON



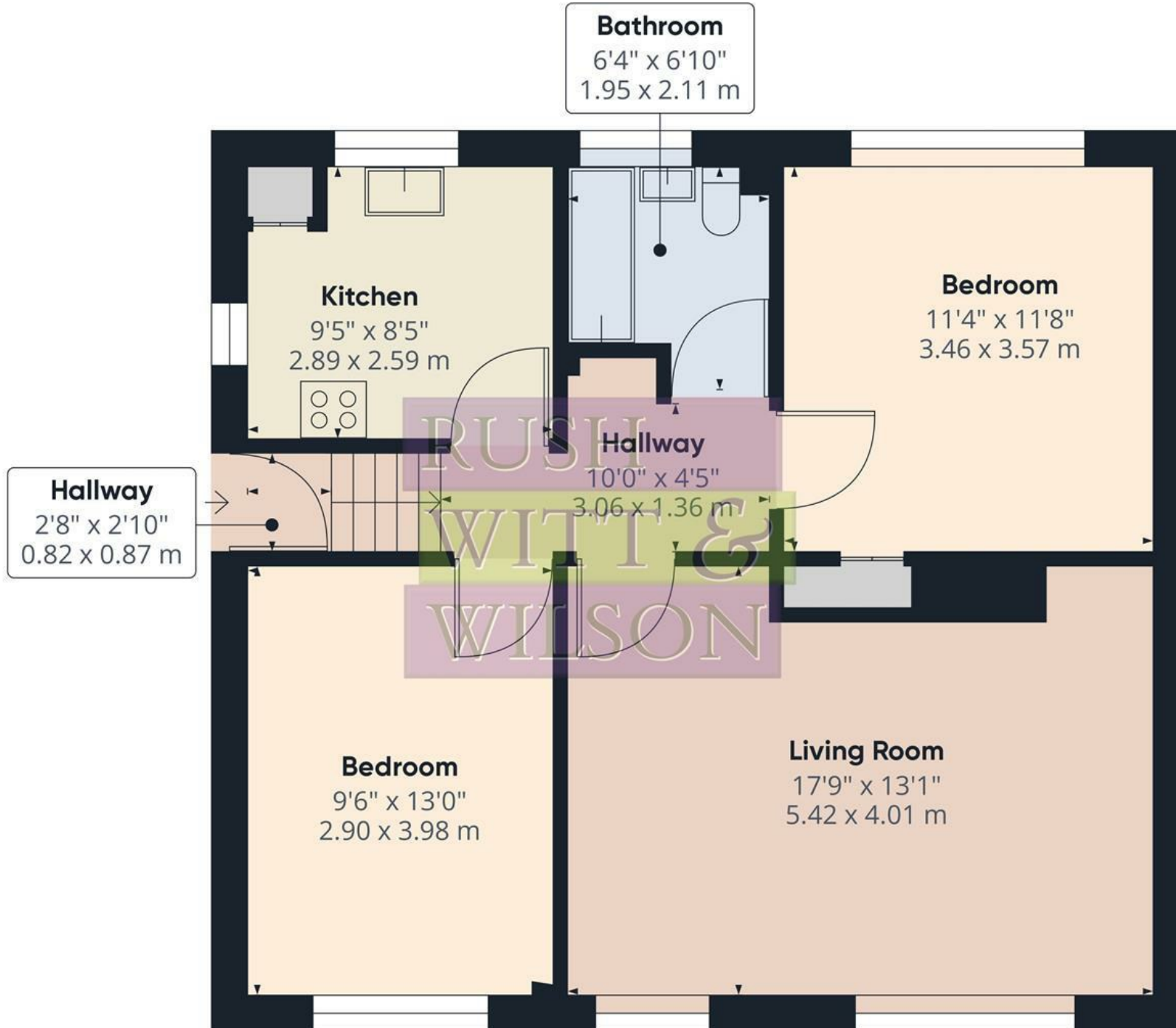
RUSH
WITT &
WILSON



RUSH
WITT &
WILSON



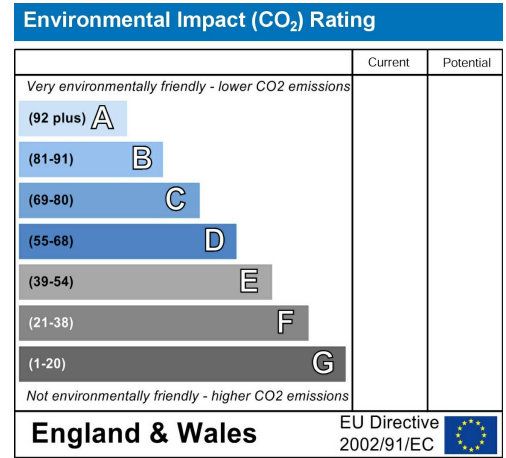
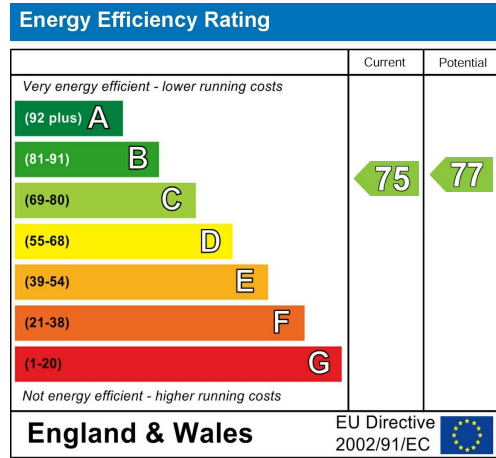
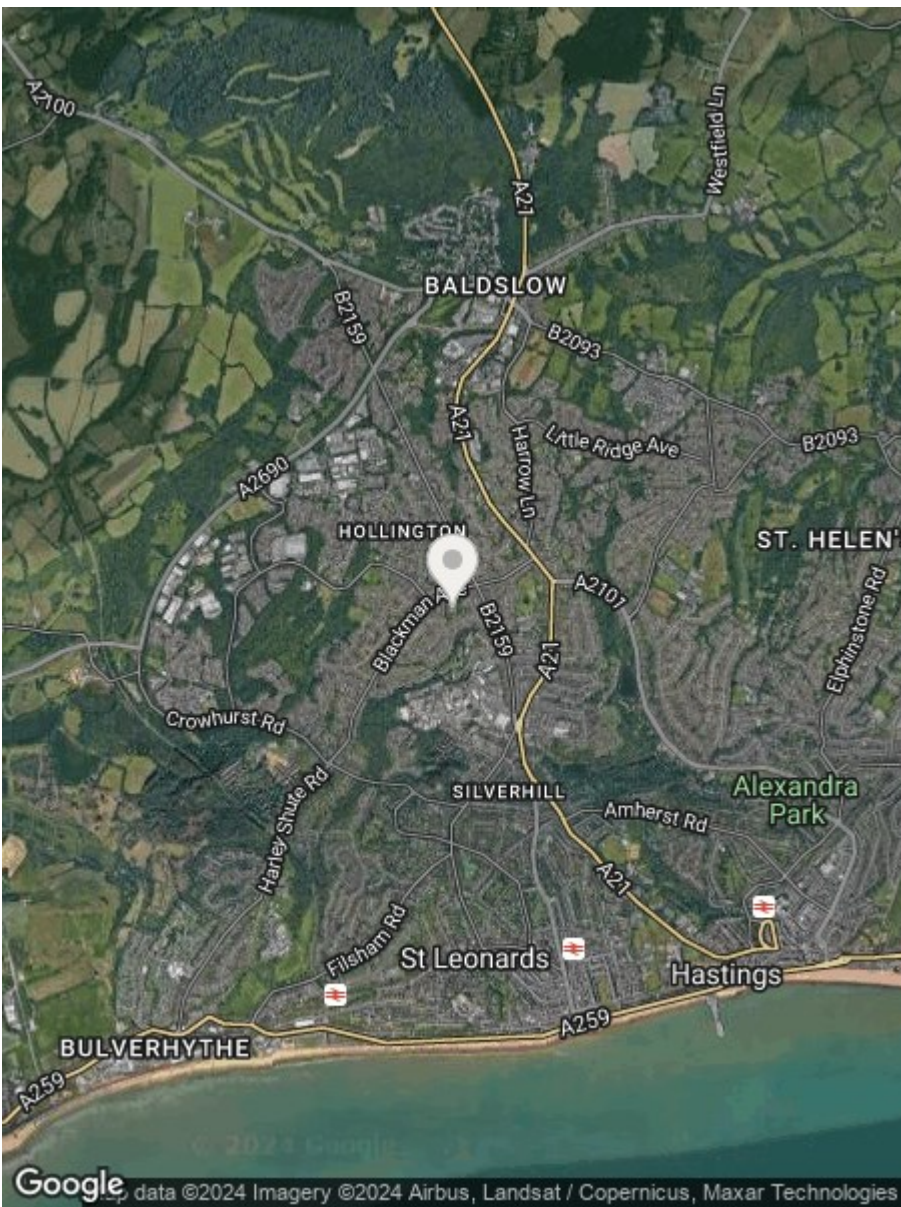
RUSH
WITT &
WILSON



Approximate total area⁽¹⁾
679.76 ft²
63.15 m²

(1) Excluding balconies and terraces

While every attempt has been made to ensure accuracy, all measurements are approximate, not to scale. This floor plan is for illustrative purposes only.



**RUSH
WITT &
WILSON**

**Residential Estate Agents
Lettings & Property Management**



**Rother House Havelock Road
Hastings
East Sussex
TN34 1BP
Tel: 01424 442443
hastings@rushwittwilson.co.uk
www.rushwittwilson.co.uk**