

**RUSH
WITT &
WILSON**



**Apartment 5 Victoria House, 42 Archery Road, St. Leonards-On-Sea, TN38 0BW
£350,000**

***Current Show Apartment* - Welcome to Victoria House, set within this prestigious development within Decimus Burton St Leonards. This simply STUNNING TWO BEDROOM NEWLY BUILT APARTMENT must be viewed to appreciate the size, finish and SEA VIEWS that come as standard with this home. Internally there is the LOUNGE/KITCHEN/DINER fully kitted with LUXURY FITMENTS with QUARTZ worktops and Bosch appliances that include two ovens with combination microwave and grill. This room then opens onto the BALCONY enjoying the aforementioned views which make a fantastic space to relax and unwind and that benefits from external power, water tap and lighting. Included is TWO DOUBLE BEDROOMS, quality bathroom suite & W/C with walk-in shower and ALLOCATED PARKING together with a share of freehold and a new 999 year lease. Located in the DECIMUS BURTON area of St Leonards, sought-after for its proximity to St Leonards SEAFRONT and promenade with its mix of shopping, bars, restaurants and mainline railway station. Immediate viewing comes highly recommended and we cannot wait to show you around these beautiful examples of a LUXURY DEVELOPMENT.**





RUSH
WITT &
WILSON



RUSH
WITT &
WILSON

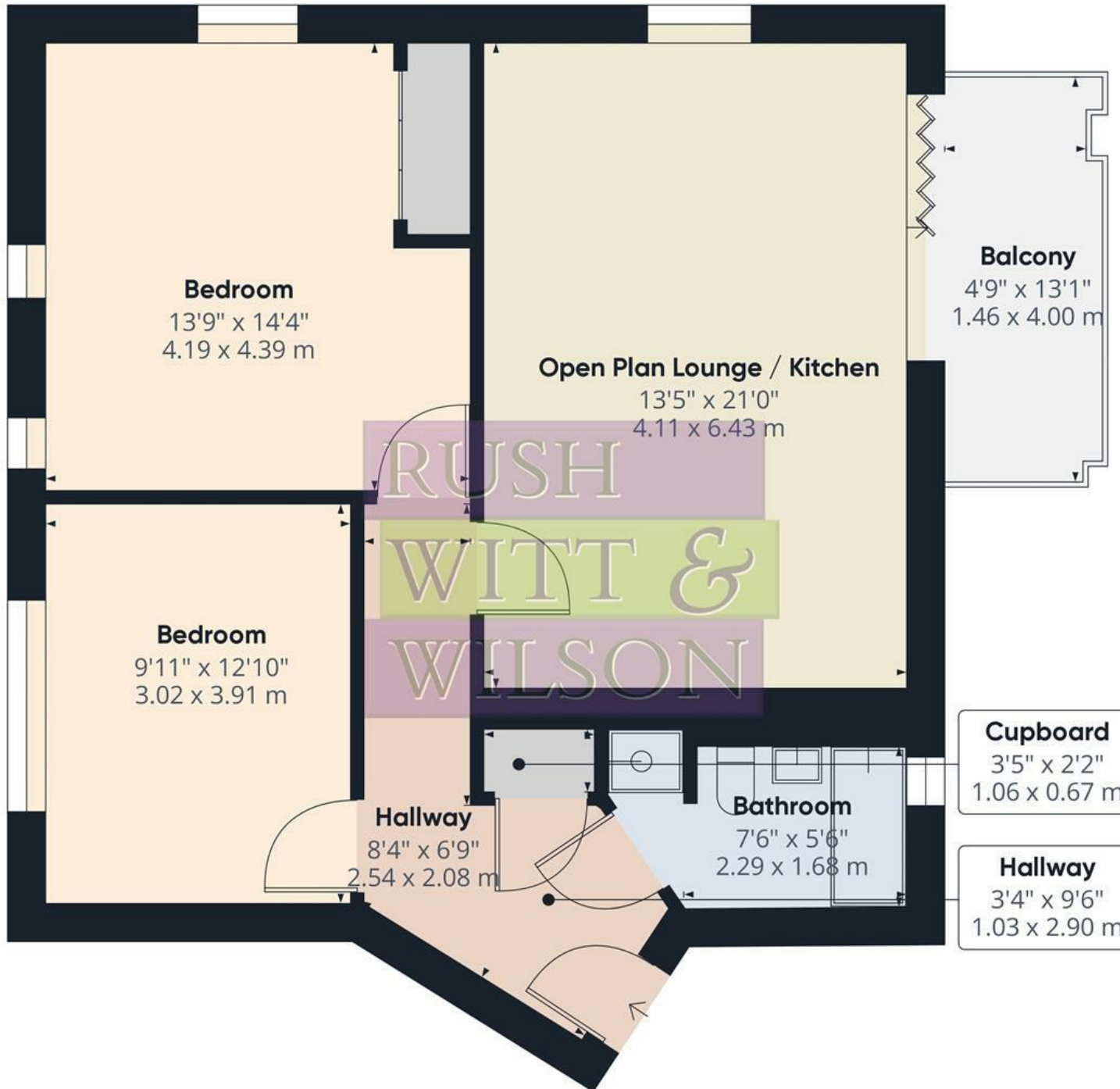


RUSH
WITT &
WILSON



RUSH
WITT &
WILSON

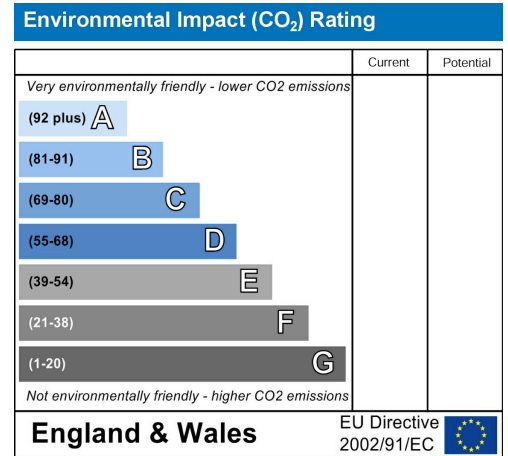
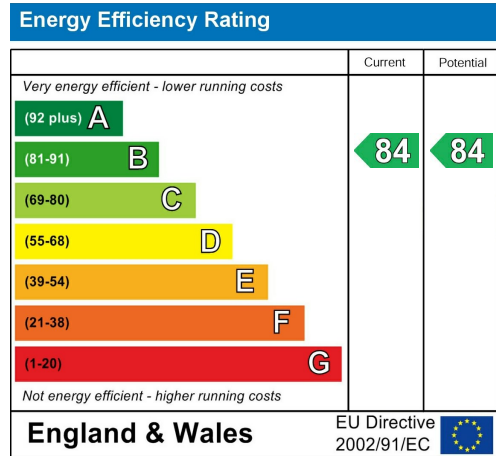
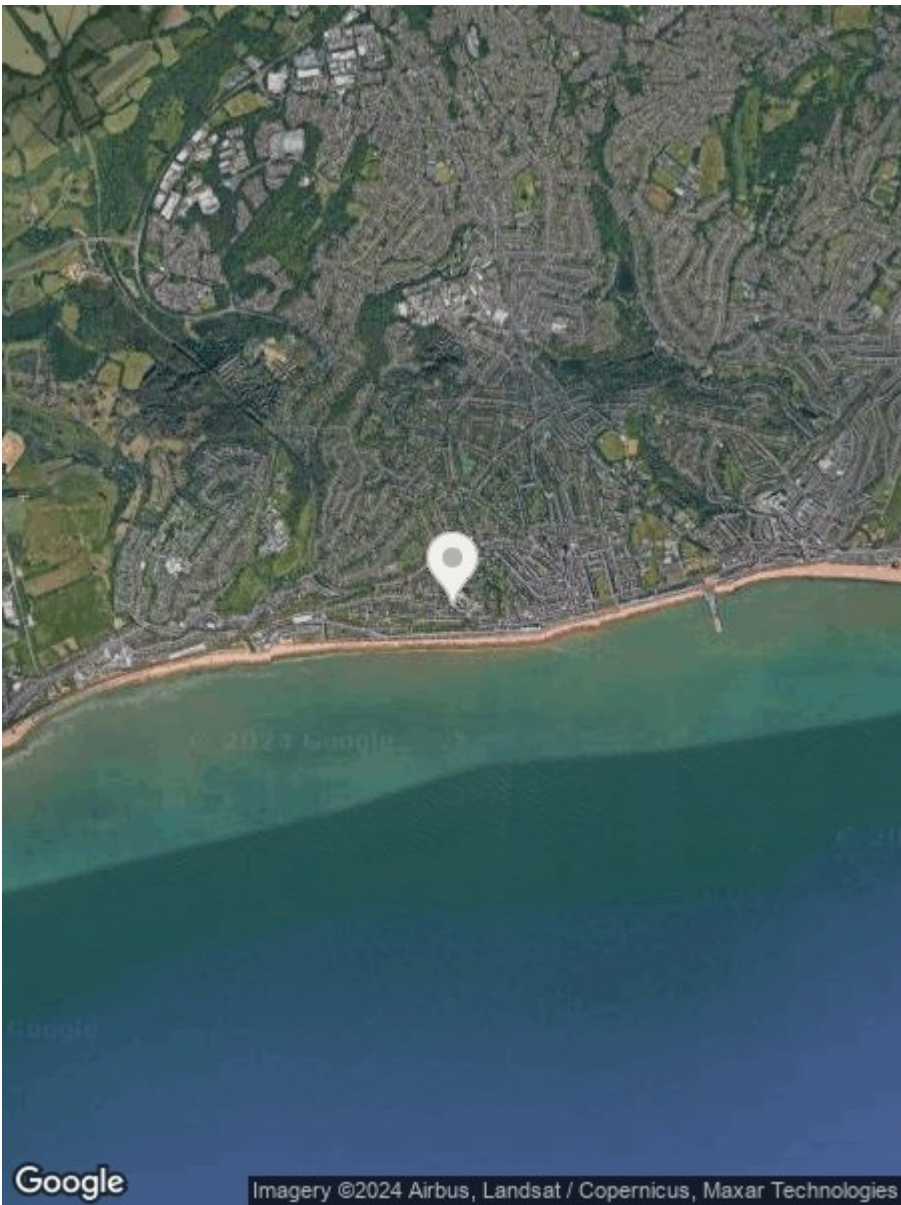




Approximate total area⁽¹⁾
768.19 ft²
71.37 m²

(1) Excluding balconies and terraces

While every attempt has been made to ensure accuracy, all measurements are approximate, not to scale. This floor plan is for illustrative purposes only.



**RUSH
WITT &
WILSON**

**Residential Estate Agents
Lettings & Property Management**



**Rother House Havelock Road
Hastings
East Sussex
TN34 1BP
Tel: 01424 442443
hastings@rushwittwilson.co.uk
www.rushwittwilson.co.uk**