

**RUSH
WITT &
WILSON**



RUSH
WITT &

3 Whistler Close, Hastings, TN34 2FS
£675,000

*****360° HDR VIRTUAL TOUR VIA THE LINK***** This stunning detached house boasts 226 sq meters (2,443 sq ft) of luxurious accommodation beautifully laid out on three elegant floors offering a striking layout with a host of modern refinements. The property was originally constructed in 2016 offering parking an integral garage that offers a further two parking spaces. Gardens are offered to the front with a beautiful level lawn to the rear as well as a substantial 'secret communal garden' with woodland set beyond. Internally the property is exquisite with accommodation boasting entrance hall, cloakroom/wc, a living room with feature external balcony terrace with stairs leading down to the garden level with the most amazing 30ft open plan kitchen/diner with bi fold doors onto the rear garden, separate utility room and an adjoining further reception room set within a raised mezzanine. The property offers five double bedrooms with one set to the ground floor and four to the first floor, two with en-suite and a family bath/shower room/wc The property has a host of features and design lead layout to suit modern living and a contemporary finish.

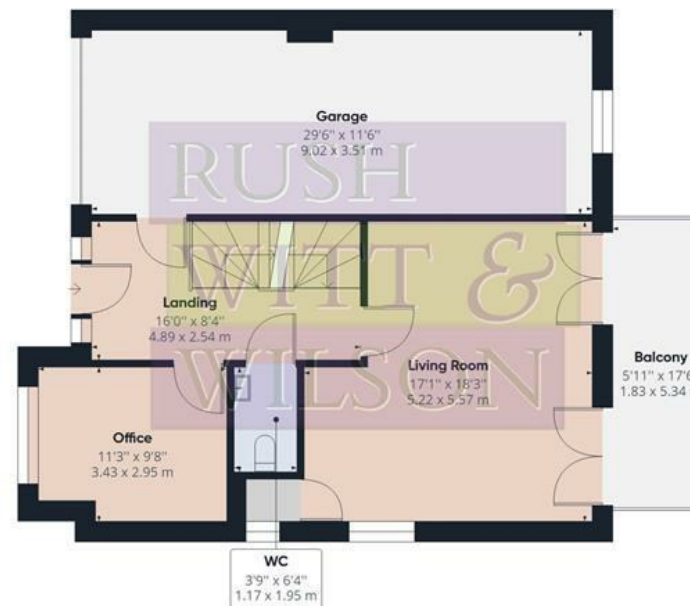








Floor 0



Floor 1



Floor 2

Approximate total area⁽¹⁾

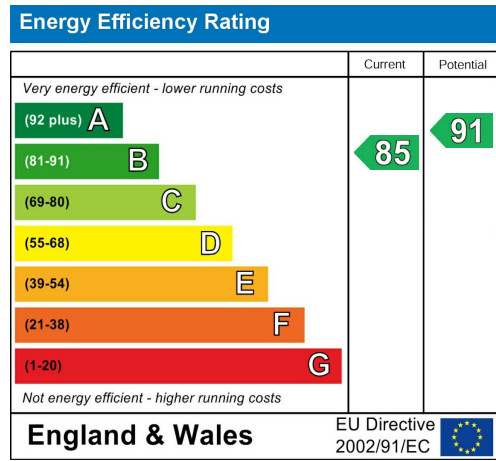
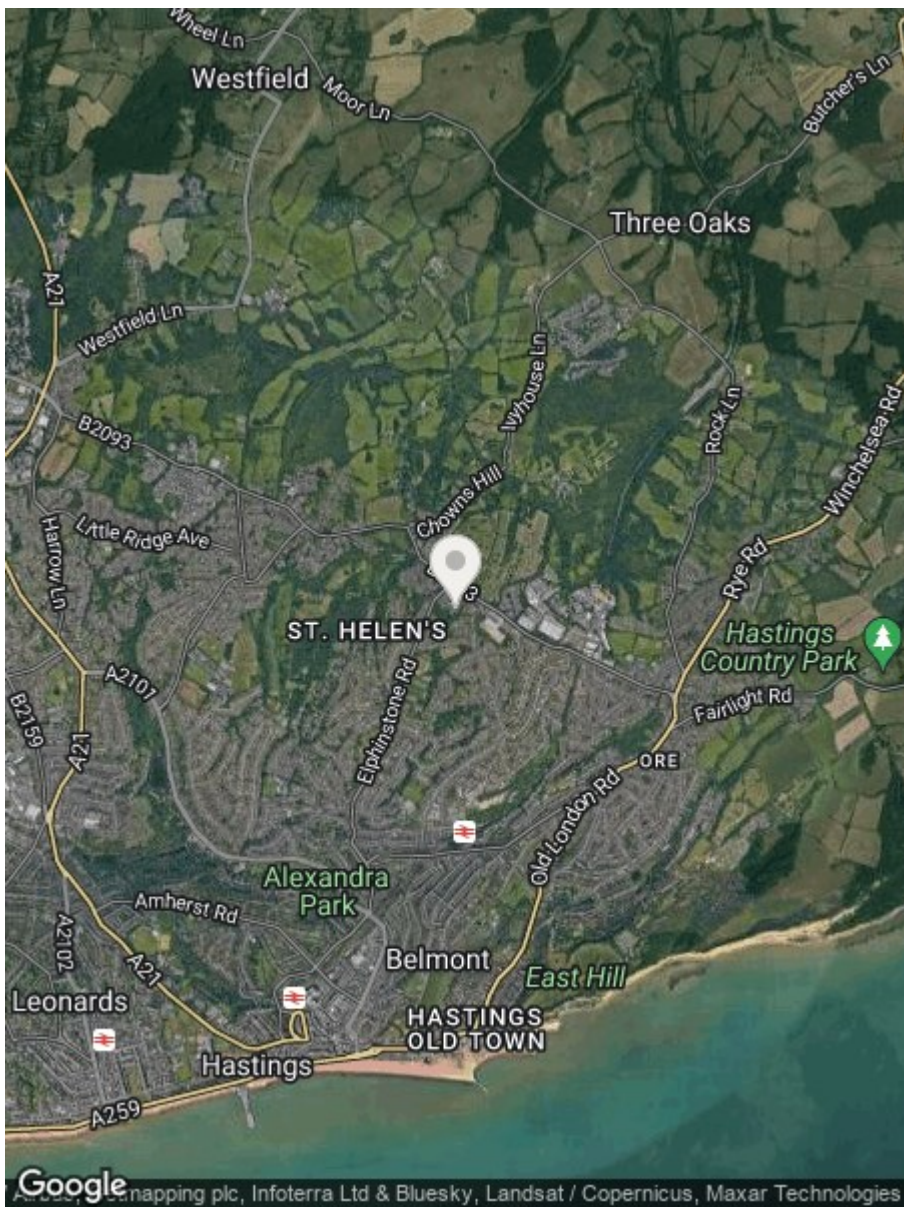
2443.25 ft²

226.99 m²

(1) Excluding balconies and terraces

While every attempt has been made to ensure accuracy, all measurements are approximate, not to scale. This floor plan is for illustrative purposes only.

GIRAFFE360



**RUSH
WITT &
WILSON**

**Residential Estate Agents
Lettings & Property Management**



**Rother House Havelock Road
Hastings
East Sussex
TN34 1BP
Tel: 01424 442443
hastings@rushwittwilson.co.uk
www.rushwittwilson.co.uk**