



The Courtyard, Nightingale House Autumn Terrace,  
Worcester, WR5 1DQ  
**£1,200 Per Month**



Stunning, modern purpose-built apartment block in a great central Worcester city location, offering very high-quality living accommodation.

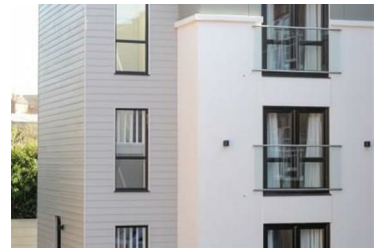
This ground floor apartment offers three double bedrooms of varying sizes.

A very modern, stylish fully fitted kitchen (washer dryer, fridge, oven, hob). This property benefits from a beautiful shower room with tasteful features such as glass splash backs.

Extremely secure property with ground floor door entry system.

Must be seen!

\*Pictures are indicative of the property\*



- Ground Floor Apartment
- Stylish Accommodation
- Designer Kitchen
- Modern Shower Room
- 3 Double Bedrooms
- Off Road Parking Available
- White goods included