



# Harmes Turner Brown

**Hersham Road, Walton-On-Thames, KT12 1JZ**



**£1,595,000 Freehold**

We are delighted to offer this beautiful detached family home which has been well cared for by the present owners and conveniently located just a few minutes walk from Walton on Thames town centre, local schools and Walton mainline station.

INDEPENDENT ESTATE AGENTS

[www.htbproperty.com](http://www.htbproperty.com)

SALES • LETTINGS • MANAGEMENT

Walton Branch  
45A High Street  
Walton on Thames  
Surrey KT12 1DH  
01932 222266

[sales@htbproperty.com](mailto:sales@htbproperty.com)  
[lettings@htbproperty.com](mailto:lettings@htbproperty.com)



Registered address: 2 AC Court, Hight Street, Thames Ditton KT7 0SR Registered in England, Number 6433673

Molesey Branch  
45 Walton Road  
East Molesey  
Surrey KT8 0DP  
0208 001 8385

INDEPENDENT ESTATE AGENTS

[www.htbproperty.com](http://www.htbproperty.com)

SALES • LETTINGS • MANAGEMENT

Walton Branch  
45A High Street  
Walton on Thames  
Surrey KT12 1DH  
01932 222266

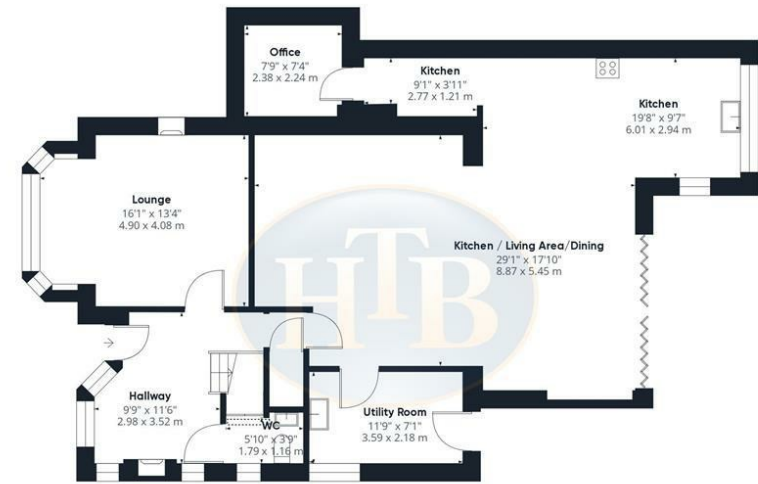
[sales@htbproperty.com](mailto:sales@htbproperty.com)  
[lettings@htbproperty.com](mailto:lettings@htbproperty.com)



Registered address: 2 AC Court, Hight Street, Thames Ditton KT7 0SR Registered in England, Number 6433673

Molesey Branch  
45 Walton Road  
East Molesey  
Surrey KT8 0DP  
0208 001 8385

# Hersham Road, Walton-On-Thames, KT12 1JZ



Approximate total area<sup>1)</sup>  
 2393.03 ft<sup>2</sup>  
 222.32 m<sup>2</sup>

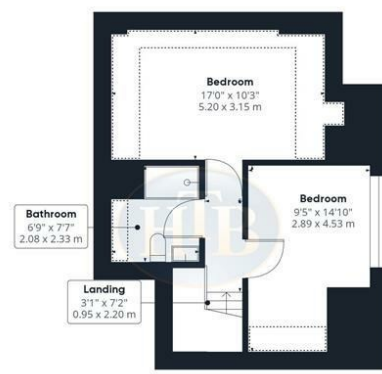
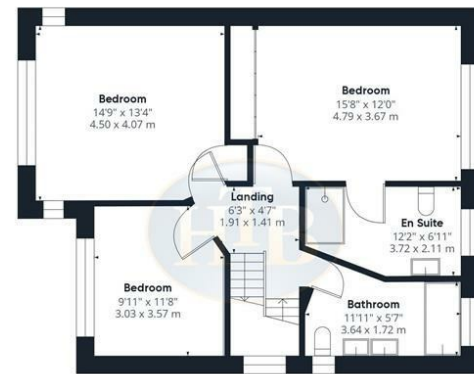
Reduced headroom  
 86.97 ft<sup>2</sup>  
 8.08 m<sup>2</sup>

(1) Excluding balconies and terraces

Reduced headroom  
 (below 1.5m/4.92ft)

While every attempt has been made to ensure accuracy, all measurements are approximate, not to scale. This floor plan is for illustrative purposes only.

GIRAFFE360



- STUNNING FIVER BEDROOM DETACHED FAMILY HOME
- SHORT WALK TO TOWN CENTRE
- MASTER BEDROOM WITH ENSUITE
- STUDY/OFFICE

- LARGE REAR GARDEN
- OFF STREET PARKING FOR MULTIPLE CARS
- UTILITY ROOM
- OPEN PLAN LIVING ROOM/FAMILY ROOM/KITCHEN DINER