



Harmes Turner Brown

Cranford Avenue, Staines-Upon-Thames, London, TW19 7AH



£2,200 Per Calendar Month

Harmes Turner Brown are delighted to offer this three bedroom home located in Staines-Upon-Thames. Available now, this stunning unfurnished property offers contemporary living in a desirable location. The modern fitted kitchen is perfect for culinary enthusiasts, featuring sleek countertops and state-of-the-art appliances. The house boasts a spacious layout with three well proportioned bedrooms, providing ample space for a family or professionals. Convenience is key, with off-street parking and a downstairs toilet for guests. The upstairs bathroom is elegantly designed with a modern three piece suite, ensuring a comfortable and stylish living experience. Don't miss out on this opportunity to make this beautiful house your home. Contact us today to arrange a viewing. EPC C. COUNCIL TAX BAND D.

INDEPENDENT ESTATE AGENTS

www.htbproperty.com

SALES • LETTINGS • MANAGEMENT

Walton Branch
45A High Street
Walton on Thames
Surrey KT12 1DH
01932 222266

sales@htbproperty.com
lettings@htbproperty.com



Registered address: 2 AC Court, Hight Street, Thames Ditton KT7 0SR Registered in England, Number 6433673

Molesey Branch
45 Walton Road
East Molesey
Surrey KT8 0DP
0208 001 8385

INDEPENDENT ESTATE AGENTS

www.htbproperty.com

SALES • LETTINGS • MANAGEMENT

Walton Branch
45A High Street
Walton on Thames
Surrey KT12 1DH
01932 222266

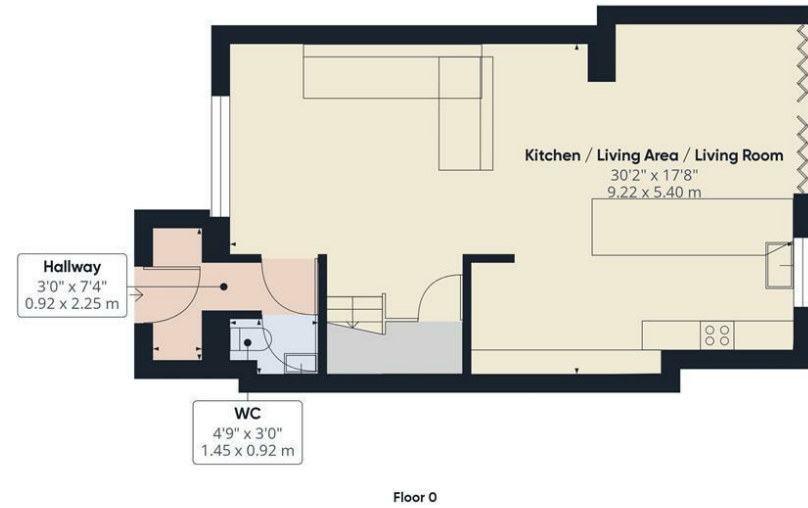
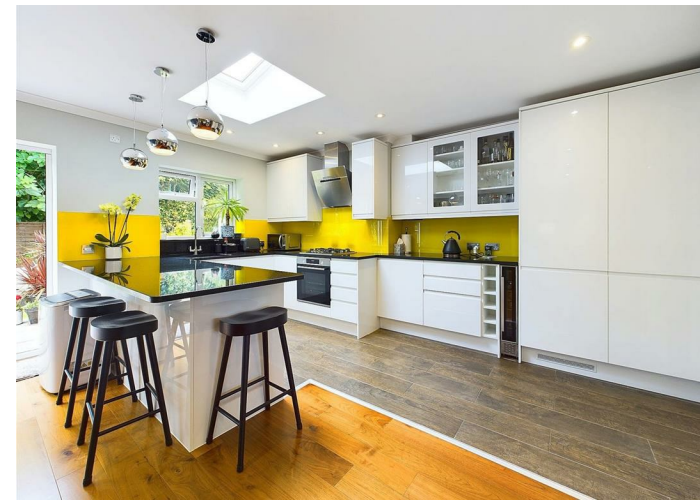
sales@htbproperty.com
lettings@htbproperty.com



Registered address: 2 AC Court, Hight Street, Thames Ditton KT7 0SR Registered in England, Number 6433673

Molesey Branch
45 Walton Road
East Molesey
Surrey KT8 0DP
0208 001 8385

Cranford Avenue, Staines-Upon-Thames, London, TW19 7AH



Floor 0



Floor 1

Approximate total area[®]
860.61 ft²
79.95 m²

(1) Excluding balconies and terraces

While every attempt has been made to ensure accuracy, all measurements are approximate, not to scale. This floor plan is for illustrative purposes only.

GIRAFFE360

- THREE BEDROOMS
- MODERN THREE PIECE BATHROOM
- COUNCIL TAX BAND D
- OFF STREET PARKING
- SUNNY GARDEN

- MODERN FITTED KITCHEN
- EPC C
- AVAILABLE NOW
- DOWNSTAIRS CLOAKROOM