

65, Telford Drive, Walton-On-Thames, KT12 2YG

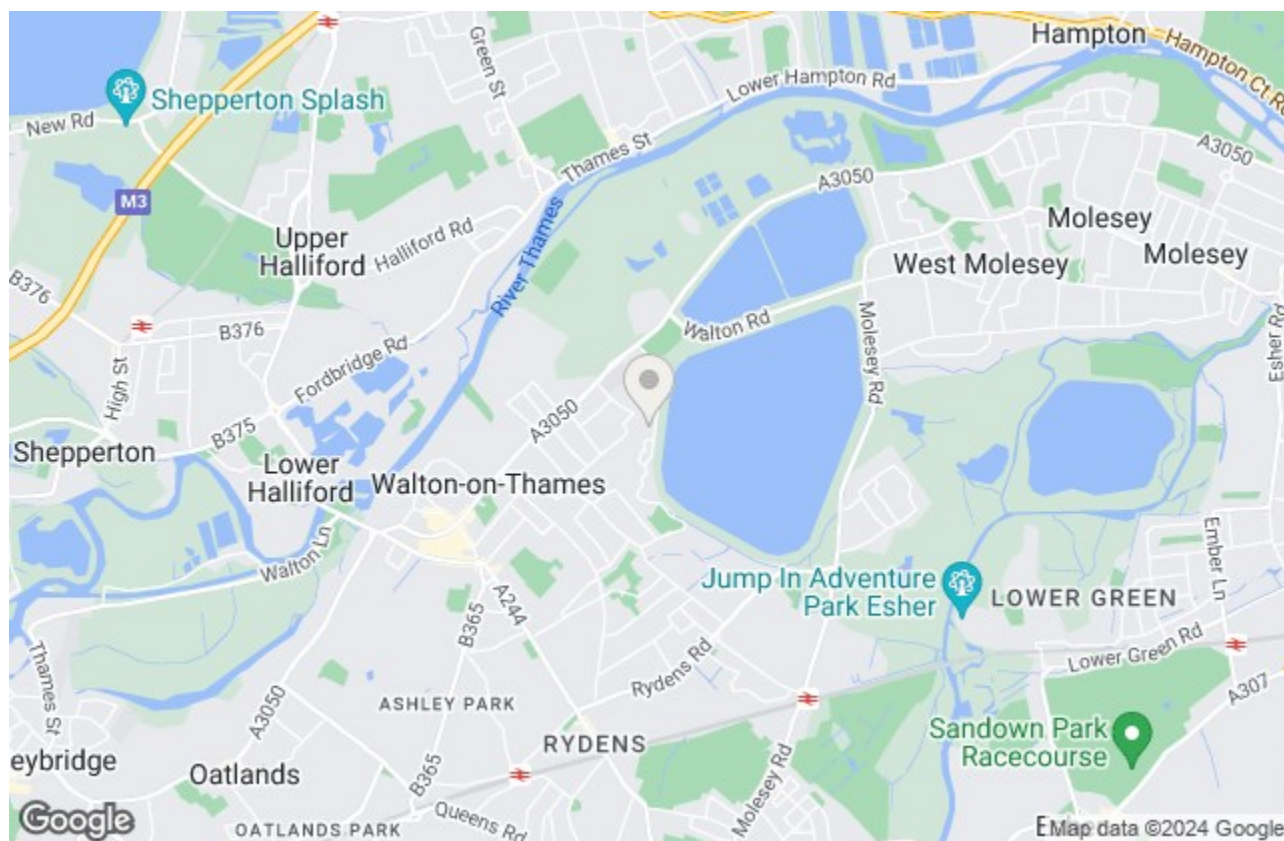
Energy Efficiency Rating		Current	Potential
Very energy efficient - lower running costs			
(92 plus) A			
(81-91) B			
(69-80) C		71	77
(55-68) D			
(39-54) E			
(21-38) F			
(1-20) G			
Not energy efficient - higher running costs			
England & Wales	EU Directive 2002/91/EC		

Environmental Impact (CO ₂) Rating		Current	Potential
Very environmentally friendly - lower CO ₂ emissions			
(92 plus) A			
(81-91) B			
(69-80) C			
(55-68) D			
(39-54) E			
(21-38) F			
(1-20) G			
Not environmentally friendly - higher CO ₂ emissions			
England & Wales	EU Directive 2002/91/EC		

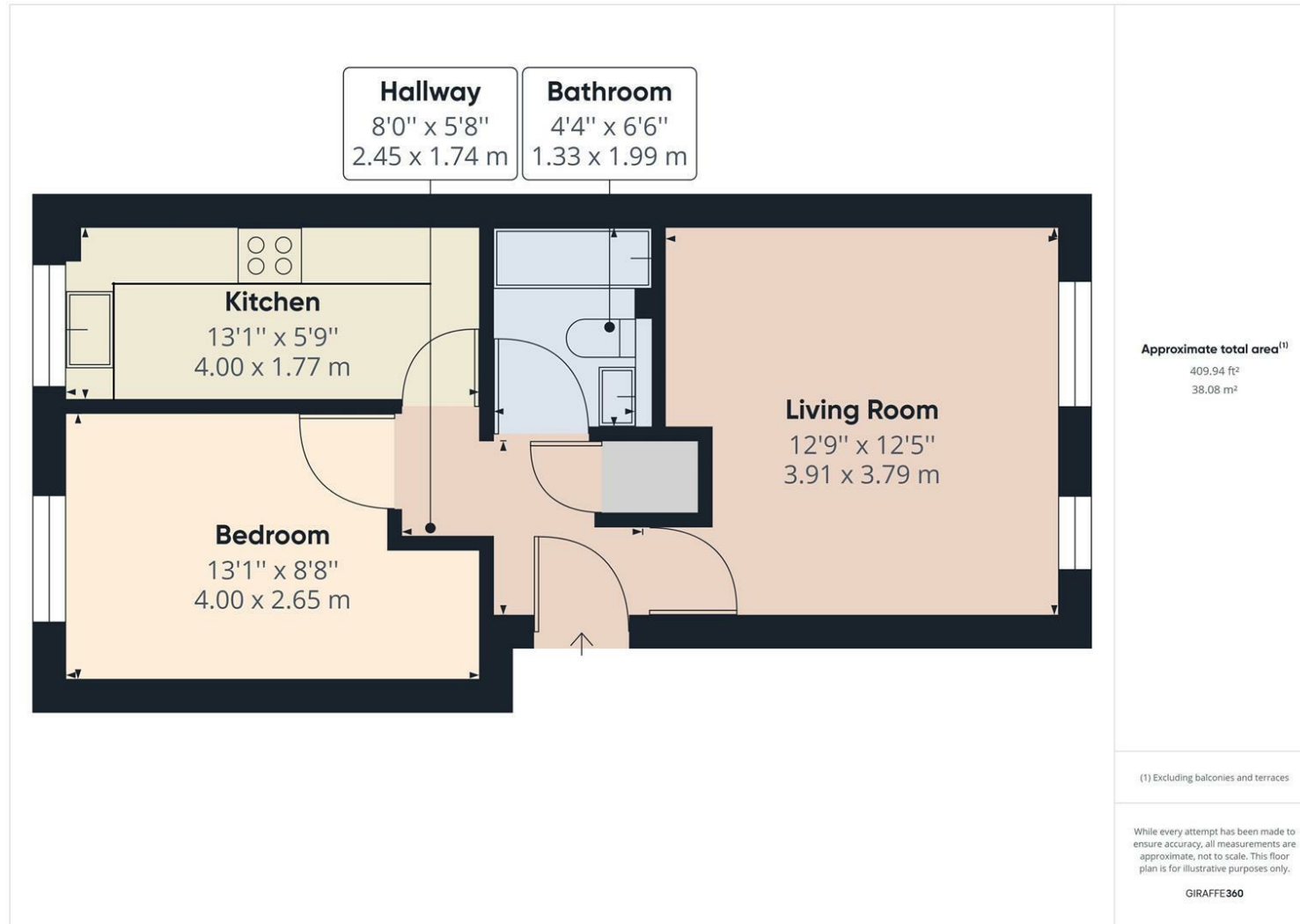


Per Calendar Month £1,450 Per Calendar Month

AVAILABLE NOW. We are delighted to offer this one bedroom first floor maisonette located in a popular residential cul-de-sac. The property benefits a generous size communal garden to the rear, mainly laid to lawn with pedestrian access from the side. The allocated parking is to the front in the residents bays with ample visitors parking nearby. This wonderful apartment is well presented throughout and briefly includes entrance hallway, bright and airy living room with space for small dining table and chairs. The modern fitted shaker style kitchen offers a good range of eye and base level units and drawers with ample work surfaces. The double bedroom which has ample space for a wardrobe whilst the bathroom includes a modern three piece suite with modern tiling. These lovely homes are always popular so an early internal viewing is highly recommended. Contact Harnes Turner Brown now for more information and an appointment to view. Council Tax: Band C,



Telford Drive, Walton-On-Thames, KT12 2YG



- FIRST FLOOR MAISONETTE
- ALLOCATED PARKING
- WELL PRESENTED THROUGHOUT
- MODERN FITTED KITCHEN
- DOUBLE BEDROOM WITH WARDROBE
- POPULAR CUL DE SAC
- LARGE COMMUNAL GARDENS
- IDEAL FIRST TIME PURCHASE
- MODERN BATHROOM
- LIVING ROOM/DINING ROOM

This plan is a representation of the property and measurements, where given, are approximate. None of the fixtures and fittings have been tested by us. These details are thought to be materially correct but we cannot guarantee there are no error and emissions and they do not form part of any contract