



37d, Homefield Road, Walton-On-Thames, KT12 3RG

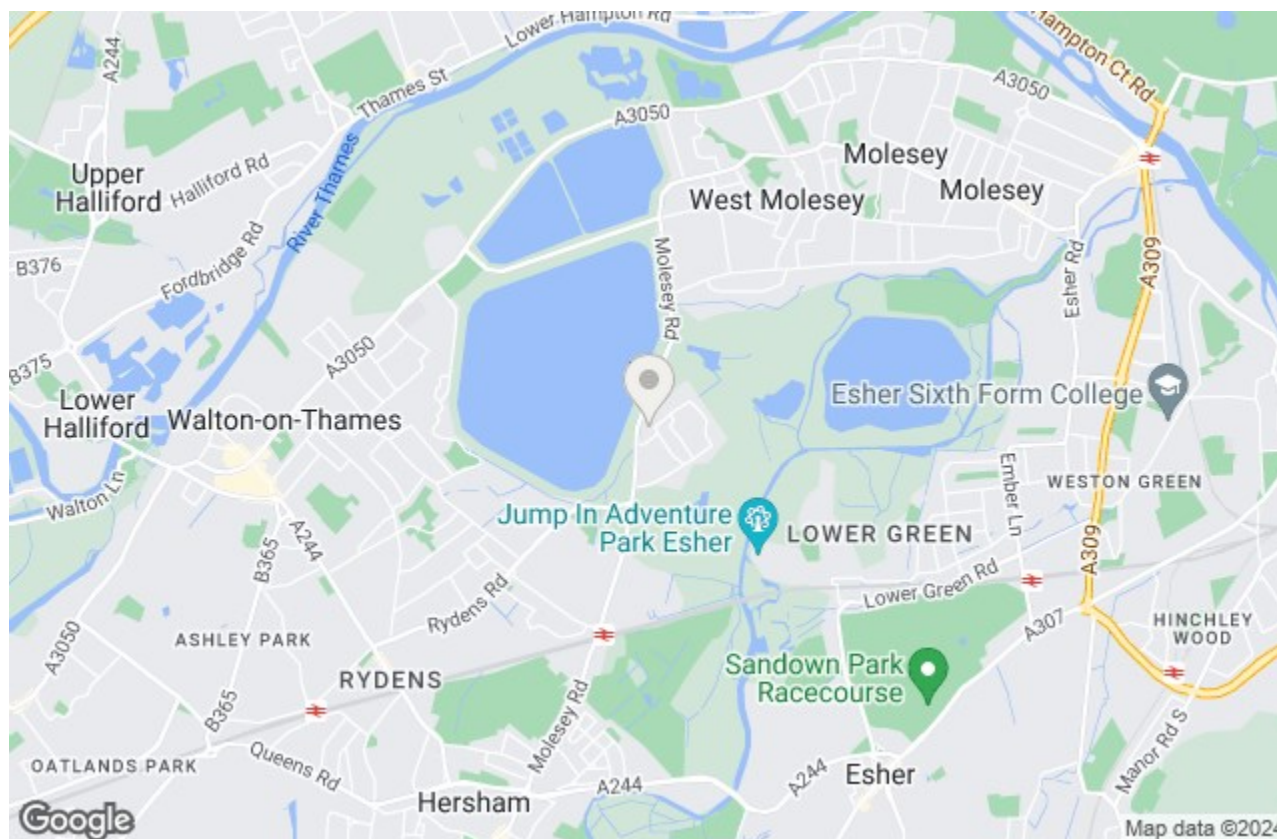
Energy Efficiency Rating		
	Current	Potential
Very energy efficient - lower running costs		
(92 plus) A		
(81-91) B		
(69-80) C		
(55-68) D		
(39-54) E		
(21-38) F		
(1-20) G		
Not energy efficient - higher running costs		
England & Wales	EU Directive 2002/91/EC	

Environmental Impact (CO ₂) Rating		
	Current	Potential
Very environmentally friendly - lower CO ₂ emissions		
(92 plus) A		
(81-91) B		
(69-80) C		
(55-68) D		
(39-54) E		
(21-38) F		
(1-20) G		
Not environmentally friendly - higher CO ₂ emissions		
England & Wales	EU Directive 2002/91/EC	

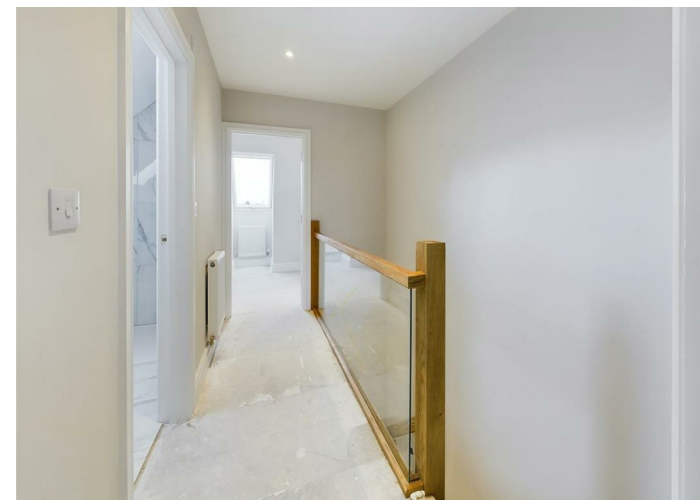


£650,000 Freehold

BRAND NEW HOUSE: We are pleased to offer this brand new luxury home located in a quiet cul de sac within easy access to Hershams mainline station. Offered for sale with no onward chain and ready for immediate occupation this stunning four bedroom home should be viewed at your earliest convenience to avoid disappointment. The accommodation briefly includes a welcoming entrance hallway, downstairs WC, open plan designer fitted kitchen with built in appliances and open plan living room/dining room/ family room. This lovely space includes bi-fold doors and a feature sky lantern, both drawing through natural light and makes for the perfect space to entertain. The bedrooms are arranged over two floors with the first floor including two double bedrooms, the master of which offers a luxury ensuite shower room. The family bathroom is separate and includes a three piece luxury suite with heated towel rail. The glass sided balustrade leads to the top floor where you will find two further bedrooms and a further modern shower room with WC. Externally the rear garden includes a private paved patio, side pedestrian access and high panel fencing. The front provides a private drive for parking plus vehicle charger point. Contact us now for an appointment to view.



Homefield Road, Walton-On-Thames, KT12 3RG



This plan is a representation of the property and measurements, where given, are approximate. None of the fixtures and fittings have been tested by us. These details are thought to be materially correct but we cannot guarantee there are no error and emissions and they do not form part of any contract