



6e, Hersham Road, Walton-On-Thames, Surrey, KT12 1JZ

Energy Efficiency Rating		
	Current	Potential
Very energy efficient - lower running costs		
(92 plus) A		
(81-91) B		
(69-80) C		
(55-68) D		
(39-54) E		
(21-38) F		
(1-20) G		
Not energy efficient - higher running costs		
England & Wales	EU Directive 2002/91/EC	

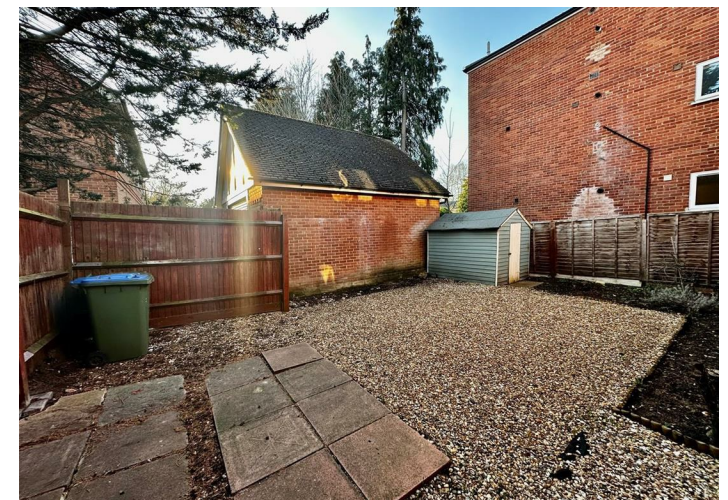
Environmental Impact (CO ₂) Rating		
	Current	Potential
Very environmentally friendly - lower CO ₂ emissions		
(92 plus) A		
(81-91) B		
(69-80) C		
(55-68) D		
(39-54) E		
(21-38) F		
(1-20) G		
Not environmentally friendly - higher CO ₂ emissions		
England & Wales	EU Directive 2002/91/EC	



Per Calendar Month £1,250 Per Calendar Month

HTB are pleased to market this one bedroom ground floor flat, with its own gated entrance into the front garden. The flat comprises lounge with wood style flooring, kitchen, double bedroom with en suite shower room. There is private parking for one car and the flat is less than 100metres from the town centre and within easy access to Walton station. Please call 01932 222266 to arrange a viewing. Available 01/03/2024 - council tax band B.

Hersham Road, Walton-On-Thames, Surrey, KT12 1JZ



- GROUND FLOOR FLAT
- TOWN CENTRE LOCATION
- AVAILABLE 01/03/2024
- COUNCIL TAX BAND B

- PRIVATE GARDEN
- CLOSE TO WALTON MAINLINE STATION
- PRIVATE PARKING

