



7 Rosemede £229,950

Shrewsbury, Shropshire, SY1 4HL

SPENCER  
JAKEMAN

## 7 Rosemede, Shrewsbury, Shropshire, SY1 4HL

- A much improved, traditional bay fronted semi-detached residence situated on a sizeable corner plot
- Offering newly fitted UPVC double glazed windows, central heating system, kitchen, family bathroom and neutral carpets
- Gated off street parking for numerous vehicles
- Generous room sizes throughout with strikingly high ceilings
- Bay fronted living room with feature log burner
- High specification breakfast/kitchen and Family bathroom

Situated on a sizeable corner plot, this bay fronted three bedroom semi detached residence has been recently improved by the current owner benefiting from newly fitted UPVC double glazing, gas central heating system, kitchen units and stylish worktops, family bathroom suite and feature tiling. Located in this much sought after area close to local amenities and useful bus links, this traditional property boasts high ceilings throughout with well-proportioned room sizes and free-flowing accommodation. In brief the property comprises a through entrance hallway with oak flooring and understairs storage, well-lit living room with bay window and feature log burner with slate hearth, open-plan breakfast/kitchen with high quality units and worktops, dining area and useful separate utility area with plumbing for appliances, UPVC double glazed door provides access to the rear garden.





On the first floor are three good bedrooms with one having built-in furniture, contemporary family bathroom with traditional white suite and eye-catching tiling and oak flooring. Outside is an immaculately gravelled driveway with side access, slabbed patio area ideal for outdoor dining, garden shed and perimeter enclosed brick wall boundary with raised fencing. There is secure gated parking for numerous vehicles.

#### Entrance Hall

Living Room 11' 4" x 10' 6" (3.45m x 3.20m)

Kitchen/Breakfast Room 16' 5" x 12' 6" (5.00m x 3.80m)

#### Utility Area

Stairs rising from hallway to first floor landing

Bedroom One 11' 4" x 10' 6" (3.45m x 3.20m)

Bedroom Two 12' 6" x 10' 6" (3.80m x 3.20m)

Bedroom Three 7' 10" x 5' 7" (2.40m x 1.70m)

Family Bathroom

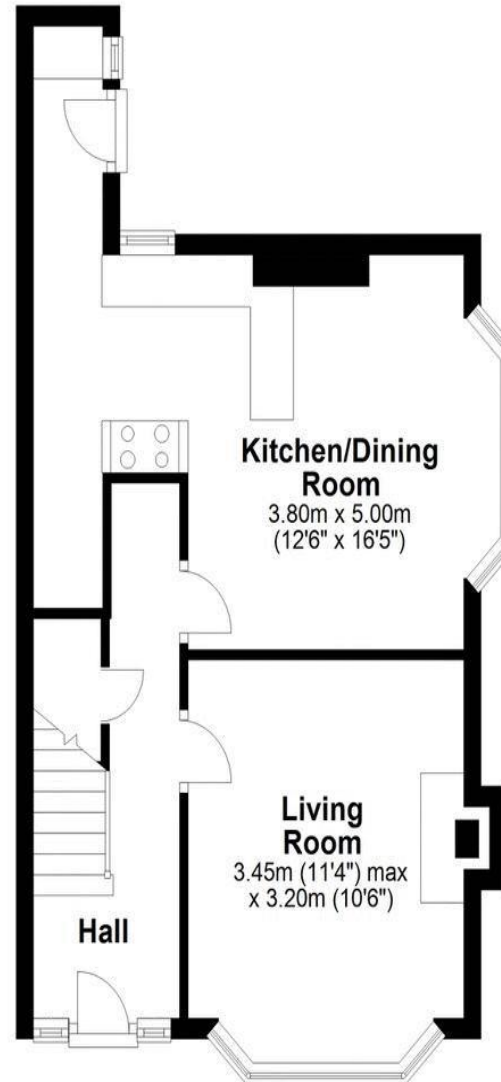






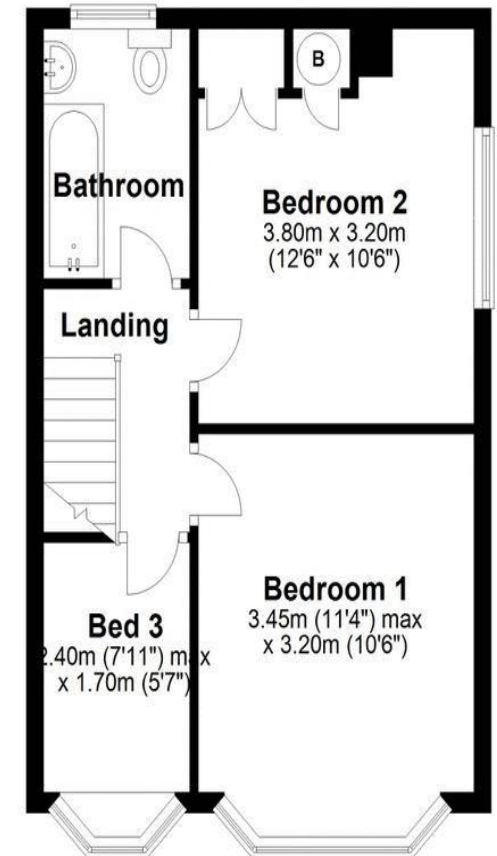
## Ground Floor

Approx. 39.2 sq. metres (421.9 sq. feet)



## First Floor

Approx. 37.2 sq. metres (400.3 sq. feet)



Total area: approx. 76.4 sq. metres (822.2 sq. feet)

46a Mardol, Shrewsbury, Shropshire SY1 1PP

Tel: 01743 297000

[www.spencerjakeman.com](http://www.spencerjakeman.com)



IMPORTANT: we would like to inform prospective purchasers that these sales particulars have been prepared as a general guide only. A detailed survey has not been carried out, nor the services, appliances and fittings tested. Room sizes should not be relied upon for furnishing purposes and are approximate. If floor plans are included, they are for guidance only and illustration purposes only and may not be to scale. If there are any important matters likely to affect your decision to buy, please contact us before viewing the property.