



8 Tannersdale £350,000

Shrewsbury, Shropshire, SY3 9FR

**SPENCER
JAKEMAN**

8 Tannersdale, Shrewsbury, Shropshire, SY3 9FR

- Newly built three bedroom bungalow
- Spacious versatile accommodation
- Highly sought after, quiet cul-de-sac location
- High quality breakfast/kitchen with a variety of appliances
- Principle bedroom with luxury en-suite and separate attractive family bathroom
- Conservatory overlooking the well-maintained enclosed rear garden
- Delightful aspect overlooking greenery
- Parking for numerous vehicles

Located in this much sought after area, at the head of a quiet-cul-de sac overlooking greenery, this newly-built three bedroom bungalow has been extremely well-maintained by the current owner and boasts spacious accommodation throughout. The modern property comprises an open and airy entrance hallway which flows through the property with two storage cupboards, generous living room with bay window, a well equipped breakfast/kitchen benefiting from a range of quality units and attractive worktops with feature tiling, integral dishwasher, double oven, fridge/freezer with useful freestanding island. From the kitchen patio doors open to the high-class conservatory which enjoys views of the rear garden. Three bedrooms are accessed from the hallway with the principle benefiting from a luxury en-suite and fitted wardrobes with a further attractive family bathroom serving the remaining bedrooms.





To the rear of the property is a pleasant enclosed rear garden with delightful patio, shrub and plant borders with gated side access to the front of the property where a tarmac driveway provides parking for numerous vehicles. The property has central heating and UPVC double glazing with new build warranty still in place. Viewing is highly recommended to appreciate the accommodation and pleasant aspect on offer.

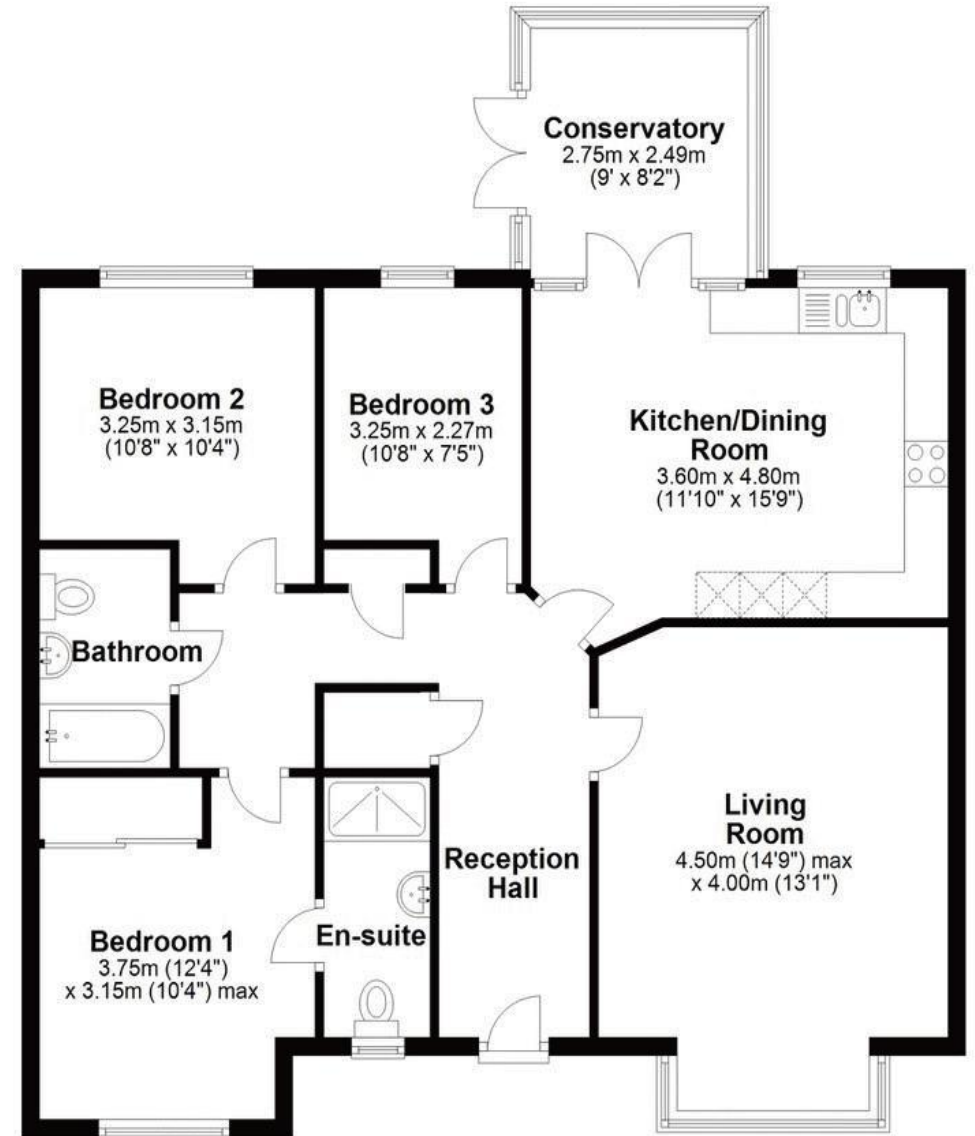
- Entrance Hallway
- Living Room 14' 9" x 13' 1" (4.50m x 4.00m)
- Kitchen/Breakfast Room 15' 9" x 11' 10" (4.80m x 3.60m)
- Conservatory 9' 0" x 8' 2" (2.75m x 2.49m)
- Bedroom One 12' 4" x 10' 4" (3.75m x 3.14m)
- En-suite
- Family Bathroom
- Bedroom Two 10' 8" x 10' 4" (3.25m x 3.14m)
- Bedroom Three 10' 8" x 7' 5" (3.25m x 2.27m)







Ground Floor
Approx. 95.8 sq. metres (1031.2 sq. feet)



Total area: approx. 95.8 sq. metres (1031.2 sq. feet)

46a Mardol, Shrewsbury, Shropshire SY1 1PP

Tel: 01743 297000

www.spencerjakeman.com



IMPORTANT: we would like to inform prospective purchasers that these sales particulars have been prepared as a general guide only. A detailed survey has not been carried out, nor the services, appliances and fittings tested. Room sizes should not be relied upon for furnishing purposes and are approximate. If floor plans are included, they are for guidance only and illustration purposes only and may not be to scale. If there are any important matters likely to affect your decision to buy, please contact us before viewing the property.