



Mulberry Mews, 68 High Street, Dormansland

Offers in Region of £475,000

**MANSELL
McTAGGART**
Trusted since 1947

Mulberry Mews

Dormansland, Lingfield

A well presented and generously proportioned, three double bedroom family home which is located in the sought after Village of Dormansland with views across the open countryside to the rear. This modern property is ideally situated in a private development within the heart of the Village, and offers accommodation arranged over three floors, totalling an impressive 1219sq ft.

The living space briefly comprises: entrance hall; a downstairs cloakroom; fitted kitchen with a range of wall and base units integrated appliances including a dishwasher, washing machine and wine fridge. The well proportioned living/dining room offers a useful storage cupboard and French doors opening to the garden, completes the ground floor.

On the first floor, there is master bedroom with fitted wardrobes and en suite shower room which has a WC and wash hand basin; double bedroom with fitted wardrobes. Furthermore, on the top floor, there is a spacious dual aspect double bedroom with an airing cupboard and views over the countryside, which completes the living accommodation.





Mulberry Mews

Dormansland, Lingfield

Externally there is an attractive front garden and allocated parking in front of the garage with electric up and over door. The Westerly aspect rear garden is low maintenance and benefits from a patio area.

Council Tax band: E

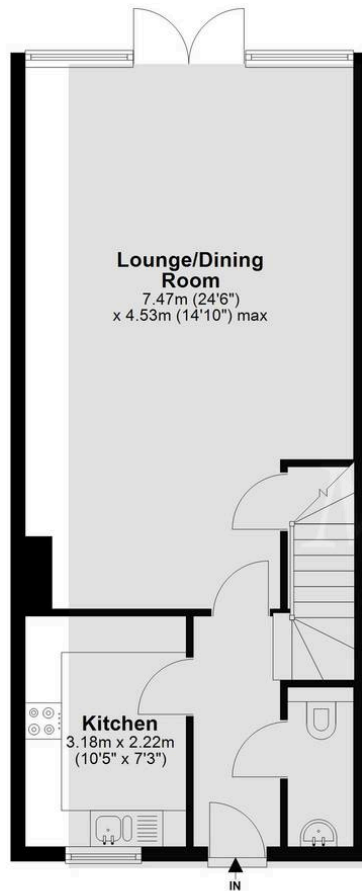
Tenure: Freehold

- Modern home
- Three double bedrooms
- 1219sq ft of living space
- Accommodation over three floors
- Modern fitted kitchen
- Family bathroom, ensuite and WC
- Garage and parking
- Views over the surrounding countryside
- Low maintenance garden
- Vendor suited



Ground Floor

Approx. 48.5 sq. metres (522.3 sq. feet)



Lounge/Dining Room

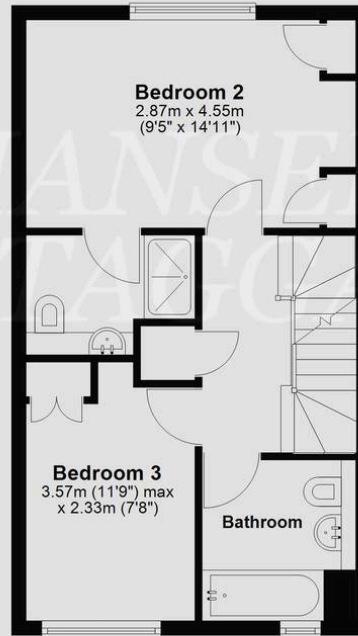
7.47m (24'6")
x 4.53m (14'10") max

Kitchen

3.18m x 2.22m
(10'5" x 7'3")

First Floor

Approx. 37.7 sq. metres (406.0 sq. feet)



Bedroom 2

2.87m x 4.55m
(9'5" x 14'11")

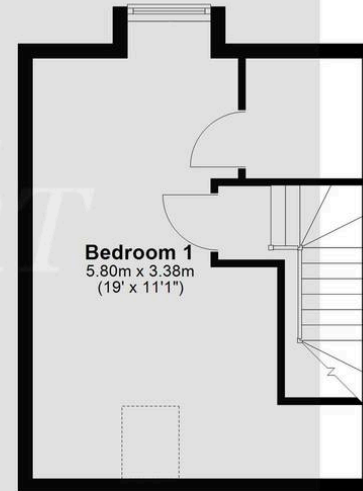
Bedroom 3

3.57m (11'9") max
x 2.33m (7'8")

Bathroom

Second Floor

Approx. 27.0 sq. metres (290.3 sq. feet)



Bedroom 1

5.80m x 3.38m
(19' x 11'1")

Total area: approx. 113.2 sq. metres (1218.6 sq. feet)

Whilst every attempt has been made to ensure the accuracy of the floor plan contained here, measurements of doors, windows, rooms and any other item are approximate and no responsibility is taken for any error, omission, or misstatement. This plan is for illustrative purposes only and should only be used as such by any prospective purchaser.
Plan produced using PlanUp.

Mansell McTaggart East Grinstead

Mansell McTaggart Ltd, 52 London Road – RH19 1AB

01342 311711

eastgrinstead@mansellmctaggart.co.uk

www.mansellmctaggart.co.uk/branch/eastgrinstead/

Consumer Protection from Unfair Trading Regulations 2008 We have not tested any apparatus, equipment, fixtures, fittings or services and so cannot verify that they are in working order or fit for purpose. You are advised to obtain verification from your solicitor or surveyor. References to the tenure of a property are based on information supplied by the seller. We have not had sight of the title documents and a buyer is advised to obtain verification from their solicitor. Items shown in photographs are not included unless specifically mentioned within the sales particulars, but may be available by separate negotiation. We advise you to book an appointment to view before embarking on any journey to see a property, and check its availability.