



Beacon Rise, East Grinstead

Guide Price £850,000 – £900,000

**MANSELL
McTAGGART**
Trusted since 1947

Beacon Rise

East Grinstead

A stunning and well presented, five double bedroom and four bathroom detached family home, ideally situated on a private estate. This property boasts a versatile living space totalling 2,299 Sq ft arranged over three floors, and also benefits from a single garage and driveway parking.

The living accommodation briefly comprises: spacious entrance hall with an understairs cupboard; downstairs cloakroom with a WC and wash hand basin; study with front aspect views; kitchen/dining room which has a modern fitted kitchen with a range of wall and base level units, granite worktops, 5 gas ring hob, dishwasher, washing machine, stacked ovens, warming draw, wine fridge and French doors to the rear garden. A 20 ft living room with Bi-fold doors to the rear garden concludes the ground floor.

On the first floor there is a generous landing with an airing cupboard; master bedroom with fitted wardrobes and a modern en suite shower room which has a WC, dual wash basins, heated towel rail and electric underfloor heating; double guest bedroom with fitted wardrobes; further double bedroom with fitted wardrobes and front aspect views. Family bathroom with a WC, wash hand basin, heated towel rail and bath. The second floor consists of a landing with two large storage cupboards and two further double bedrooms. A second family bathroom with WC, wash hand basin, heated towel rail and a shower cubicle, completes the living accommodation.





Beacon Rise

East Grinstead

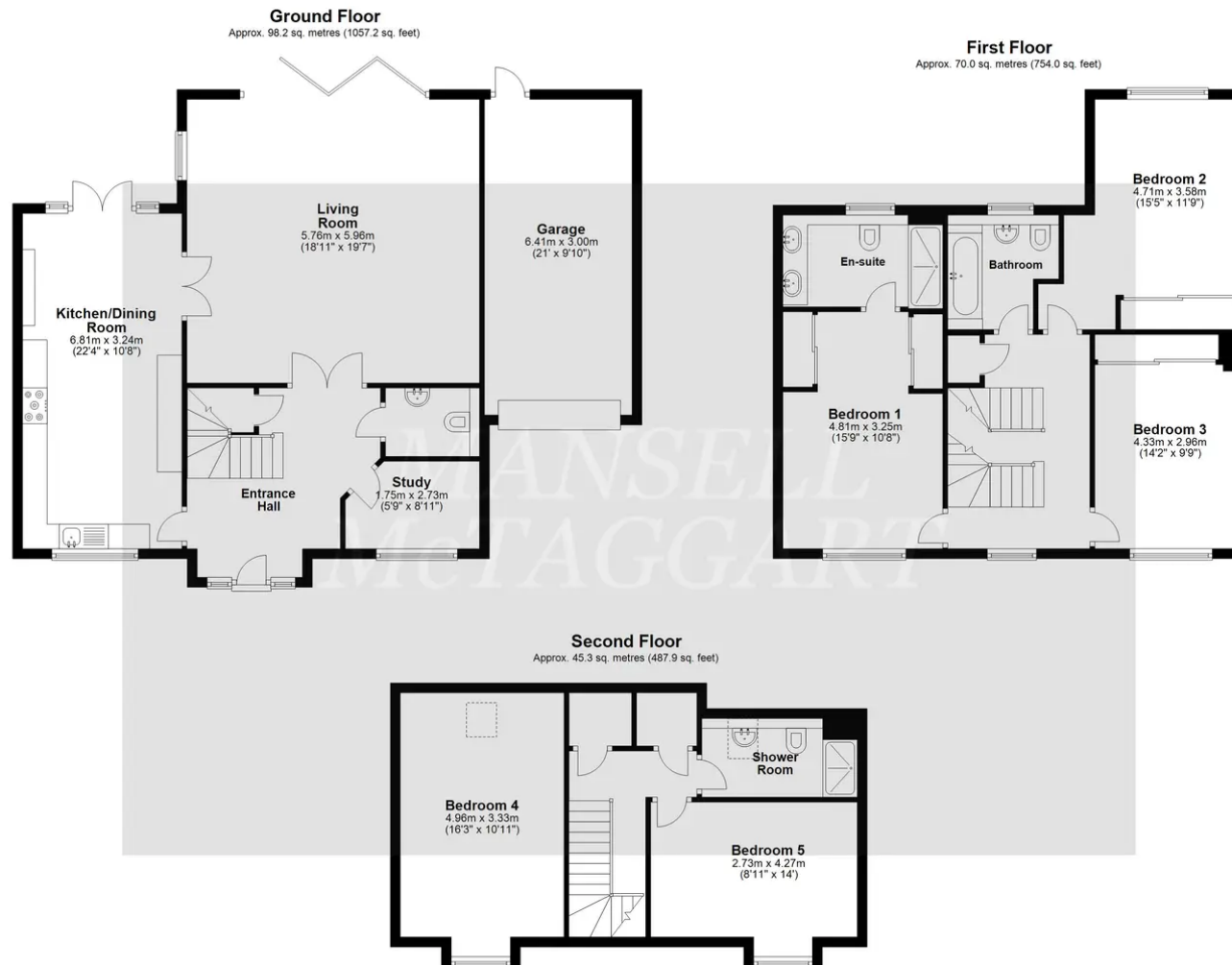
A stunning and well presented, five double bedroom and four bathroom detached family home, ideally situated on a private estate. This property boasts a versatile living space totalling 2,299 Sq ft arranged over three floors, and also benefits from a single garage and driveway parking.

Council Tax band: G

Tenure: Freehold

- Detached family home
- Five double bedrooms
- 2299 Sq ft of living space
- Four bathrooms
- Modern fitted kitchen with appliances
- 20ft Living room
- Single garage
- Driveway parking & plenty of visitor parking
- Private estate
- Close proximity to East Grinstead town centre





Total area: approx. 213.6 sq. metres (2299.1 sq. feet)

Whilst every attempt has been made to ensure the accuracy of the floor plan contained here, measurements of doors, windows, rooms and any other item are approximate and no responsibility is taken for any error, omission, or misstatement. This plan is for illustrative purposes only and should only be used as such by any prospective purchaser.
Plan produced using PlanUp.

Mansell McTaggart East Grinstead

Mansell McTaggart Ltd, 52 London Road – RH19 1AB

01342 311711

eastgrinstead@mansellmctaggart.co.uk

www.mansellmctaggart.co.uk/branch/eastgrinstead/

Consumer Protection from Unfair Trading Regulations 2008 We have not tested any apparatus, equipment, fixtures, fittings or services and so cannot verify that they are in working order or fit for purpose. You are advised to obtain verification from your solicitor or surveyor. References to the tenure of a property are based on information supplied by the seller. We have not had sight of the title documents and a buyer is advised to obtain verification from their solicitor. Items shown in photographs are not included unless specifically mentioned within the sales particulars, but may be available by separate negotiation. We advise you to book an appointment to view before embarking on any journey to see a property, and check its availability.