



**JAMES  
ANDERSON**









## TO LET

10 Rosemary Lane, Mortlake, SW14

## £1,750 Per Month

Per Month

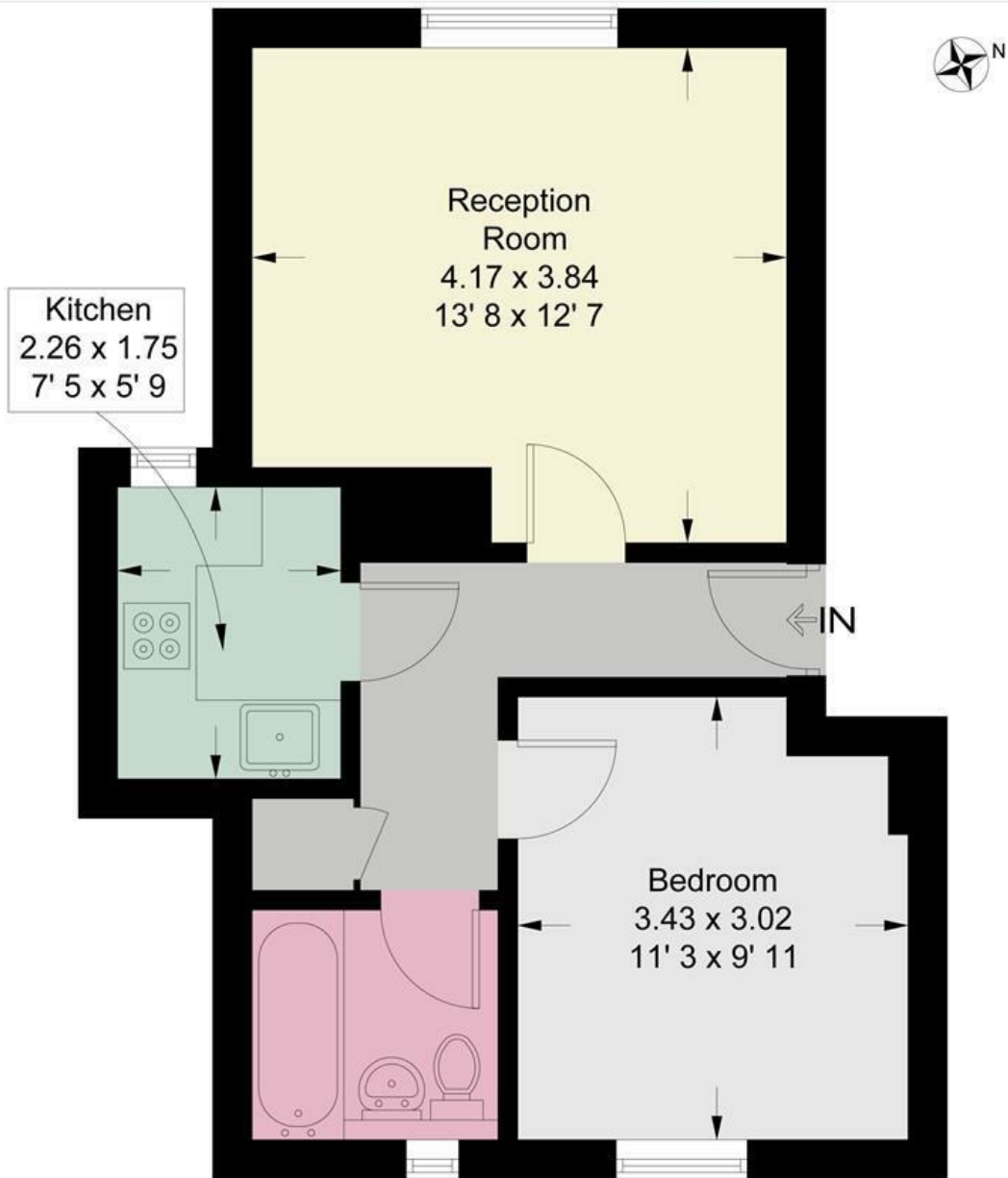
A very well presented ground floor purpose built apartment with off street parking, located in a quiet cul-de-sac moments from Mortlake Station. The accommodation comprises of entrance hall, well proportioned and bright reception room, fitted kitchen, double bedroom with built in storage and one bathroom. The property is double glazed and benefits from an allocated off street parking space and access to communal gardens. Rosemary Lane is ideally located for transport links and within easy reach of East Sheen High Street with its many shops and restaurants, and just moments from the River Thames. This flat is undergoing redecoration.

-  One Large Bedroom
-  One Bathroom
-  One Reception Room
-  Fully Equipped Kitchen
-  EPC C | Council Tax C | Minimum Term 12 Months
-  Moments From Mortlake Station
-  Excellent Local Primary Schools
-  Popular Private Development
-  Allocated Off-street Parking
-  Deposit £2019.23 | Holding Deposit £403.84



OPEN 7 DAYS A WEEK • Weekdays until 9pm • Weekends until 5pm

0208 876 6611



## Ground Floor

This plan is not to scale and must be used as layout guidance only. All measurements and areas are approximate and should not be relied upon to provide accurate information. This plan must not be relied upon when making property valuations, design considerations or any other such relevant decisions. We accept no responsibility or liability (whether in contract, tort or otherwise) in relation to any loss whatsoever arising from or in connection with any use of this plan or the adequacy, accuracy or completeness of it or any information within it.



Energy Efficiency Rating		Current	Potential
Very energy efficient - lower running costs			
(92 plus) <b>A</b>			
(81-91) <b>B</b>			
(69-80) <b>C</b>			
(55-68) <b>D</b>			
(39-54) <b>E</b>			
(21-38) <b>F</b>			
(1-20) <b>G</b>			
Not energy efficient - higher running costs			
<b>England &amp; Wales</b>		EU Directive 2002/91/EC	

Environmental Impact (CO <sub>2</sub> ) Rating		Current	Potential
Very environmentally friendly - lower CO <sub>2</sub> emissions			
(92 plus) <b>A</b>			
(81-91) <b>B</b>			
(69-80) <b>C</b>			
(55-68) <b>D</b>			
(39-54) <b>E</b>			
(21-38) <b>F</b>			
(1-20) <b>G</b>			
Not environmentally friendly - higher CO <sub>2</sub> emissions			
<b>England &amp; Wales</b>		EU Directive 2002/91/EC	

