



**JAMES  
ANDERSON**



## TO LET

Brewhouse Lane, Putney, SW15

## £2,100 Per Month

Per Month

Stunning one double bedroom apartment located close to the River Thames. Further benefitting from 24/7 concierge service and residents gym. Putney Wharf is a modern development located moments from Putney Bridge and High street along with all the shops, bars, restaurants the area has to offer. Transport links are available from Putney Bridge and East Putney tube stations (District Line) There is an overland service from Putney train station and various bus routes in addition to the Thames River boat service.



One Bedroom



Modern Bathroom



Bright Reception Room



Modern Kitchen



EPC Rating C / Council Tax Band D / Holding Deposit £507.69



Putney Bridge



Putney High



River Thames



On Site Gym

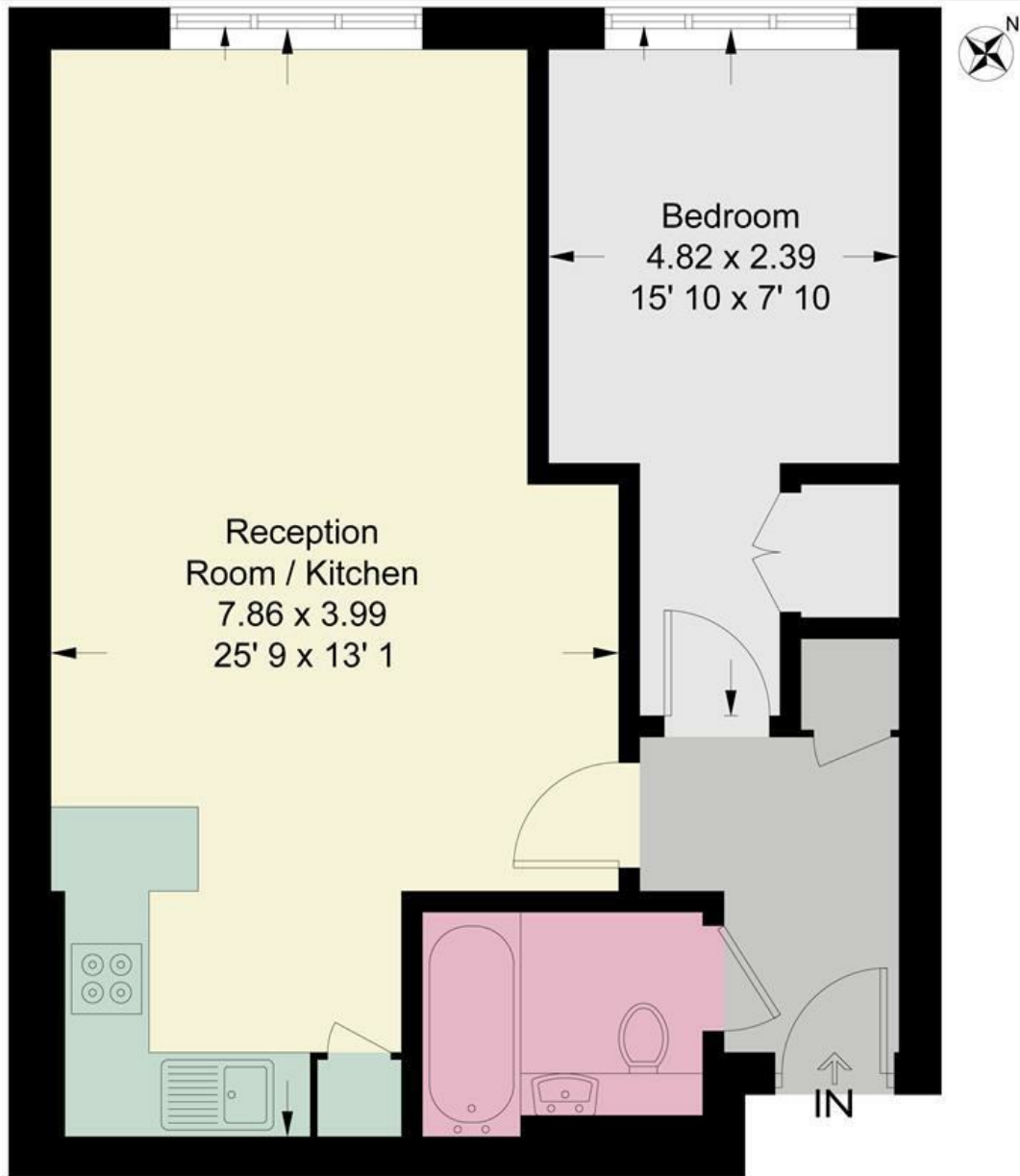


Minimum Term 12 Months / Deposit £2423.07



OPEN 7 DAYS A WEEK • Weekdays until 9pm • Weekends until 5pm

0208 785 4400



**First Floor**

This plan is not to scale and must be used as layout guidance only. All measurements and areas are approximate and should not be relied upon to provide accurate information. This plan must not be relied upon when making property valuations, design considerations or any other such relevant decisions. We accept no responsibility or liability (whether in contract, tort or otherwise) in relation to any loss whatsoever arising from or in connection with any use of this plan or the adequacy, accuracy or completeness of it or any information within it.



| Energy Efficiency Rating                    |                         | Current   | Potential |
|---|-------------------------|-----------|-----------|
| Very energy efficient - lower running costs |                         |           |           |
| (92 plus) <b>A</b>                          |                         |           |           |
| (81-91) <b>B</b>                            |                         |           |           |
| (69-80) <b>C</b>                            |                         | <b>70</b> | <b>78</b> |
| (55-68) <b>D</b>                            |                         |           |           |
| (39-54) <b>E</b>                            |                         |           |           |
| (21-38) <b>F</b>                            |                         |           |           |
| (1-20) <b>G</b>                             |                         |           |           |
| Not energy efficient - higher running costs |                         |           |           |
| <b>England &amp; Wales</b>                  | EU Directive 2002/91/EC |           |           |

| Environmental Impact (CO <sub>2</sub> ) Rating                  |                         | Current | Potential |
|---|-------------------------|---------|-----------|
| Very environmentally friendly - lower CO <sub>2</sub> emissions |                         |         |           |
| (92 plus) <b>A</b>  |                         |         |           |
| (81-91) <b>B</b>  |                         |         |           |
| (69-80) <b>C</b>  |                         |         |           |
| (55-68) <b>D</b>  |                         |         |           |
| (39-54) <b>E</b>  |                         |         |           |
| (21-38) <b>F</b>  |                         |         |           |
| (1-20) <b>G</b>   |                         |         |           |
| Not environmentally friendly - higher CO <sub>2</sub> emissions |                         |         |           |
| <b>England &amp; Wales</b>                                      | EU Directive 2002/91/EC |         |           |

