



**Astons**  
*of Sussex*  
Residential Sales & Lettings



**Briar Cottage, Church Road, East Wittering, PO20 8PU**



# Briar Cottage, Church Road PO20 8PU

Guide Price £675,000

Situated in East Wittering, this extremely well presented four bedroom detached bungalow offers an excellent opportunity for those seeking a versatile home by the coast. With generous living spaces, a recently renovated kitchen, and a sizeable garden, this property is ideal for families or those looking to put their own stamp on a home.

Upon entering, you are welcomed into a bright and airy hallway leading to the heart of the home – a stylish and modern open plan kitchen and dining room. Recently updated to a high standard, the kitchen boasts a range of integrated appliances, sleek stone work surfaces, and ample storage, making it a practical and attractive space for cooking and entertaining.

The bungalow offers four well proportioned bedrooms, including a spacious principal bedroom with its own en-suite shower room and fitted wardrobes. A further four piece family bathroom serves the remaining bedrooms, fitted with contemporary fixtures and fittings.

Externally, the property benefits from a large driveway providing ample parking for multiple vehicles. The rear garden is a sizeable blank canvas, ready for landscaping to suit a buyer's needs, and includes a patio area—perfect for outdoor dining or relaxation.

Additional features include double glazing throughout and gas central heating, ensuring year round comfort. Furthermore, the property offers exciting potential for extension or redevelopment, subject to the necessary consents.

Located within easy reach of East Wittering's shops, cafés, and amenities, as well as the stunning beaches of the Witterings, this bungalow presents a fantastic opportunity to acquire a well located, spacious home with plenty of potential.





## LOCATION

East Wittering village centre is within a short stroll and offers a comprehensive range of amenities including a primary school, doctors surgery, chemist, dentist and a wide selection of quality independent shops and mini supermarkets. West Wittering beach is approximately two miles to the west as is popular for its 'Blue Flag' sandy beaches and the famous National Trust Reserve of East Head, there is access to beautiful walks over the sand dunes and stunning views across The Solent to the Nab Tower and Isle of Wight.

**Tenure** Freehold | **Council Tax** Band D | **EPC** D

## Entrance Hall

**Sitting Room** 19'4" (5.89m) x 17'11" (5.46m)

**Kitchen / Dining Room** 23'9" (7.24m) x 12'2" (3.71m)

**Conservatory / Utility Room** 25'10" (7.87m) x 7'7" (2.31m)

**Bedroom 1** 14'7" (4.45m) x 9'7" (2.92m)

## En Suite

**Bedroom 2** 11'5" (3.48m) x 8'11" (2.72m)

**Bedroom 3** 8'1" (2.46m) x 7'9" (2.36m)

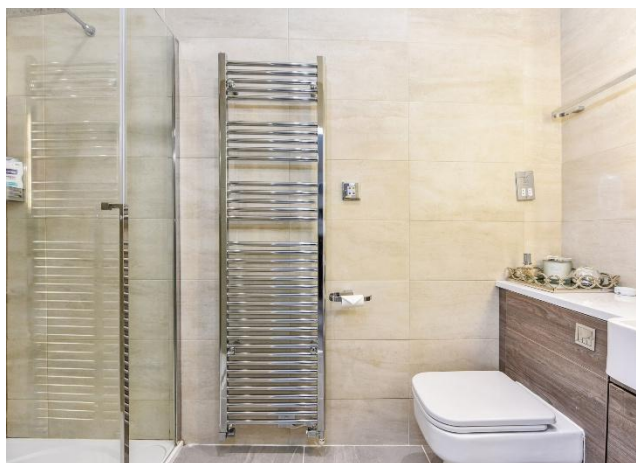
**Bedroom 4** 9'3" (2.82m) x 9'2" (2.79m)

## Family Bathroom

### General

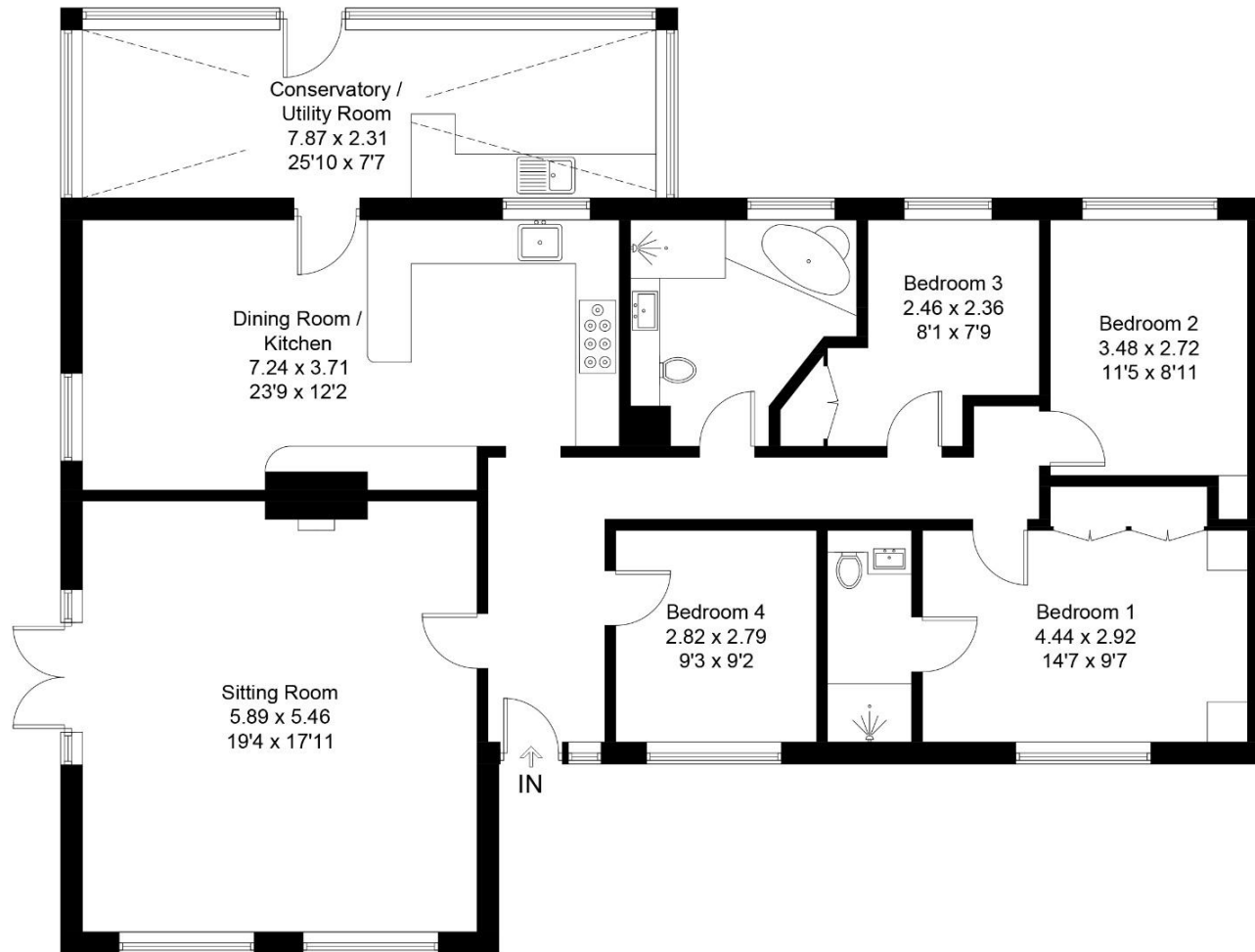
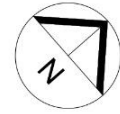
The property is connected to all mains services. Gas heating to radiators.

We understand that the property is timber-framed; therefore, buyers are advised to conduct their own enquiries regarding mortgage suitability.



## Briar Cottage, Church Road, PO20 8PUD

Approximate Gross Internal Area = 149.0 sq m / 1604 sq ft



### Ground Floor

Whilst every attempt has been made to ensure the accuracy of the floor plan contained here, measurements of doors, windows, rooms and any other items are approximate and no responsibility is taken for any error, omission, or miss-statement. This plan is for illustrative purposes only and should be used as such by any prospective purchaser.



1 New Parade, East Wittering, West Sussex, PO20 8EA

01243 670765

[sales@astonsofsussex.co.uk](mailto:sales@astonsofsussex.co.uk) | [www.astonsofsussex.co.uk](http://www.astonsofsussex.co.uk)

Astons of Sussex for themselves and the VENDORS or Lessors of this property, whose agents they are, give notice that 1) these particulars are produced in good faith, are set out as a guide only and do not constitute any part of a contract. 2) No person in the employment of Astons of Sussex has any authority to make or give representation or warranty in respect of this property. 3) Photographs may include lifestyle shots and local views. There may also be photographs including chattels not included in the sale of the property. 4) Measurements given are approximate and should not be relied upon and are for guidance only. Company No: 4647991