



Pebbles, East Bracklesham Drive, Bracklesham Bay, PO20 8JW

Guide Price £1,595,000

Tenure Freehold | **Council Tax** Band E | **EPC** C

Introducing Pebbles, a stunning four bedroom detached bungalow situated along the seafront on the much requested East Bracklesham Drive. Recently renovated with great attention to detail, this property offers a wonderful blend of style, functionality, and potential. Whether you're seeking a permanent residence or a lucrative holiday retreat, Pebbles delivers on all fronts, boasting a track record of successful holiday rentals with impressive income figures available upon request.

As you step into the home, a spacious entrance hall welcomes you and offers access to all rooms. Three of the four bedrooms are generously sized to comfortably accommodate a double or king-size bed, with the master bedroom boasting the additional luxury of an en suite shower room. Additionally, a separate WC adds convenience for residents and guests, while a fully tiled shower room serves the remaining bedrooms with equal elegance and practicality.

Positioned centrally within its plot, Pebbles presents exciting possibilities for expansion, including the potential to enlarge the footprint or utilise the expansive loft space, subject to obtaining the necessary consents. Parking is a breeze with ample space for multiple vehicles at the front, alongside a detached garage for added convenience.

Pebbles presents an exceptional opportunity to embrace coastal living. With its combination of elegance, practicality, and investment potential, this property is sure to create immediate interest. The recently renovated kitchen, featuring a sleek grey shaker-style door with wood effect work surfaces further enhances its appeal.



Our client has provided details indicating that the property earns an approximate annual net income of £80,000 from holiday rentals, factoring in associated expenses and operational costs.

LOCATION

Pebbles is situated directly on the beach on one of Bracklesham Bays most prime positions. The village itself has a popular beach which is enjoyed by water sports enthusiasts, local residents and visitors alike. There is a small selection of amenities close by including a beach cafe called 'Billy`s' where you can enjoy a cold beverage by the sea, however further facilities can be found at the nearby village of East Wittering which include a primary school, doctors, chemist, dentist, and a selection of quality independent shops as well as two mini supermarkets. West Wittering is within 3 miles and is renowned for its beautiful sandy beach which was awarded its 'Blue Flag' status in 2003 and is regularly featured in the national media as one of the top coastal locations in the country. The National Trust Reserve at East Head is a designated site of special scientific interest and offers wonderful walks over the sand dunes and views across the The Solent to the Nab Tower & the Isle of Wight.

For sailing enthusiasts, Birdham Pool Marina and Chichester Marina are located a short drive away. Additional comprehensive shopping and leisure facilities are also available in nearby Chichester some 8 miles to the north where the city centre offers a wide range of shops, cafes and restaurants and is steeped in rich architecture such as the 12th century cathedral.

Entrance Hall 24'4" (7.42m) x 7'4" (2.24m)

Sitting/Dining Room 19'3" (5.87m) x 9'5" (2.87m)

Kitchen 10'9" (3.28m) x 9'10" (3m)

Conservatory 18'11" (5.77m) x 8'4" (2.54m)

Bedroom 1 19'3" (5.87m) x 9'5" (2.87m)

Bedroom 2 12'9" (3.89m) x 10'4" (3.15m)

Bedroom 3 13'8" (4.17m) x 12'6" (3.81m)

Bedroom 4 10'6" (3.2m) x 7'2" (2.18m)

Garage



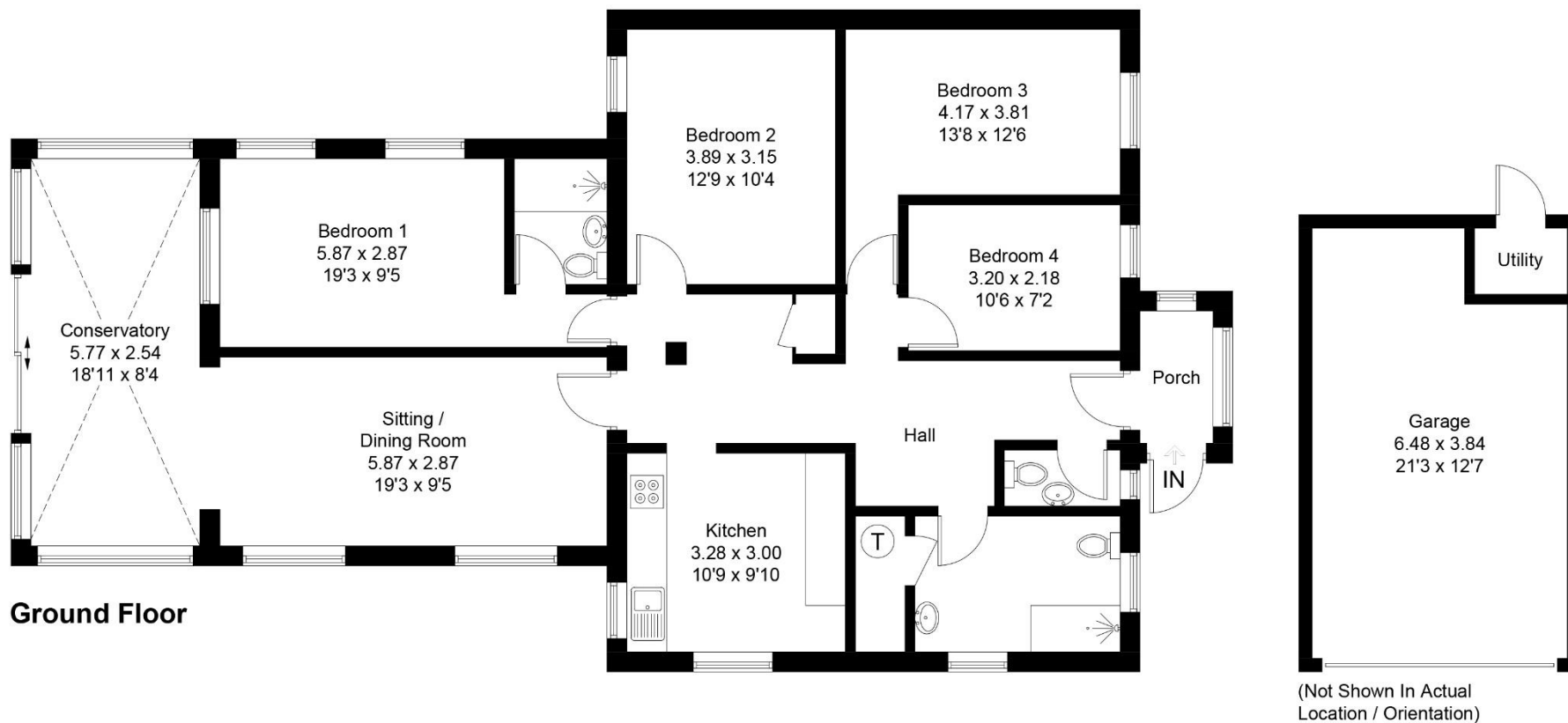


Pebbles, East Bracklesham Drive, PO20 8JW

Approximate Gross Internal Area = 125.3 sq m / 1349 sq ft

Garage = 25.0 sq m / 269 sq ft

Total = 150.3 sq m / 1618 sq ft



Whilst every attempt has been made to ensure the accuracy of the floor plan contained here, measurements of doors, windows, rooms and any other items are approximate and no responsibility is taken for any error, omission, or miss-statement. This plan is for illustrative purposes only and should be used as such by any prospective purchaser.



Selsey Office
104-106 High Street
Selsey, West Sussex
PO20 0QG

01243 607809

1 New Parade
East Wittering
West Sussex
PO20 8EA

01243 670765

sales@astonsofsussex.co.uk
lettings@astonsofsussex.co.uk

www.astonsofsussex.co.uk

Zoopa OnTheMarket.com rightmove

Astons of Sussex for themselves and the VENDORS or Lessors of this property, whose agents they are, give notice that 1) these particulars are produced in good faith, are set out as a guide only and do not constitute any part of a contract. 2) No person in the employment of Astons of Sussex has any authority to make or give representation or warranty in respect of this property. 3) Photographs may include lifestyle shots and local views. There may also be photographs including chattels not included in the sale of the property. 4) Measurements given are approximate and should not be relied upon and are for guidance only. Company No: 4647991