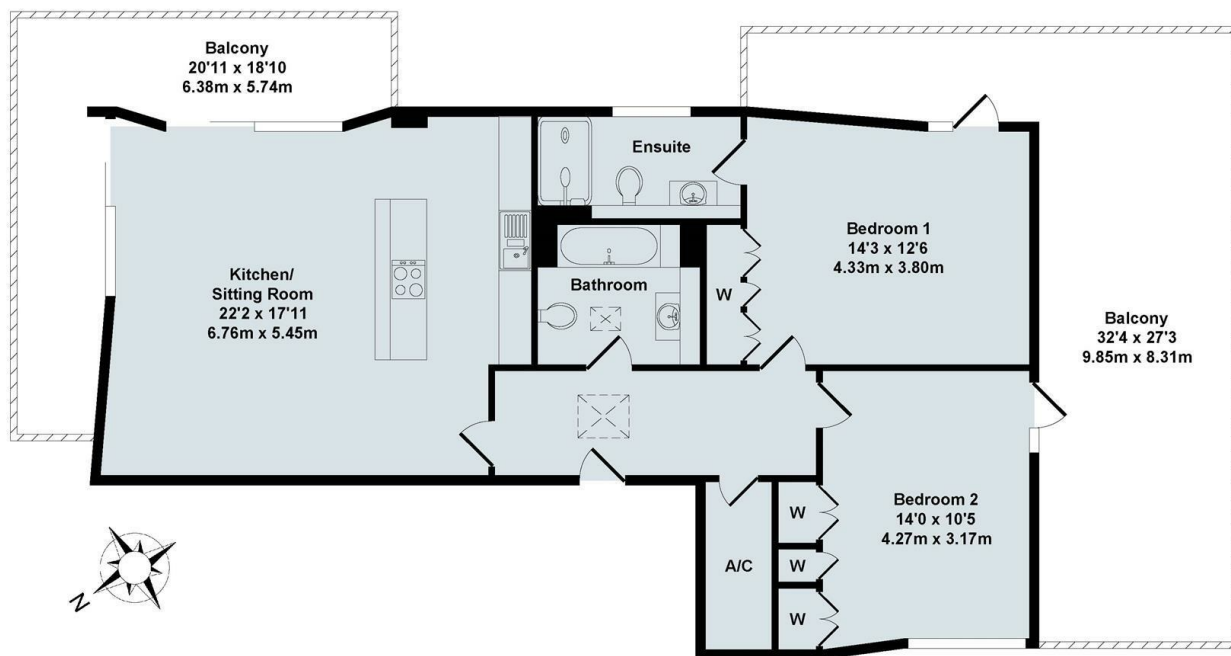




Apartment 9, Hawthorne House, 75 Hill Top Road, Oxford, OX4

£2,300 PCM - 24th March 2026.

- Roof terrace and balcony
- Two bedrooms
- Parking for 1 car
- Mains gas electricity and water
- Far reaching views
- Two bathrooms
- Council Tax D
- Unfurnished with integrated appliances
- Electric heating
- EPC C



Total Approx. Floor Area 956 Sq.Ft. (88.80 Sq.M.)

All items illustrated on this plan are included in the "Total Approx Floor Area"

Directions

Viewings

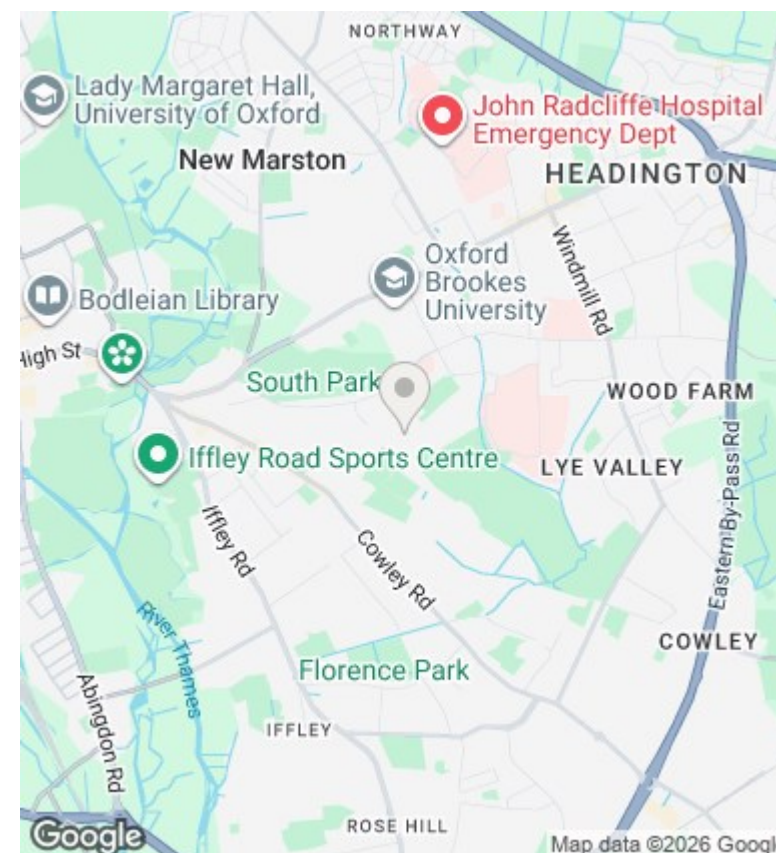
Viewings by arrangement only. Call 01865 515900 to make an appointment.

Council Tax Band

D

EPC Rating:

C



Energy Efficiency Rating		
	Current	Potential
Very energy efficient - lower running costs		
(92-plus) A		
(81-91) B		
(69-80) C	73	73
(55-68) D		
(39-54) E		
(21-38) F		
(1-20) G		
Not energy efficient - higher running costs		
England & Wales	EU Directive 2002/91/EC	