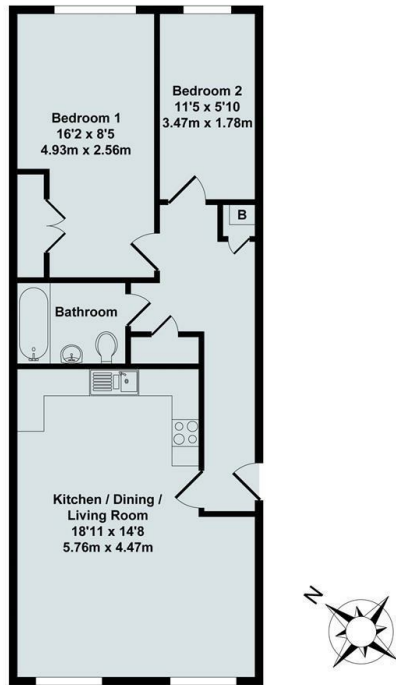




11B Fane Road, Marston, Oxford, OX3 0RZ

£1,450 - 6th December 2025.

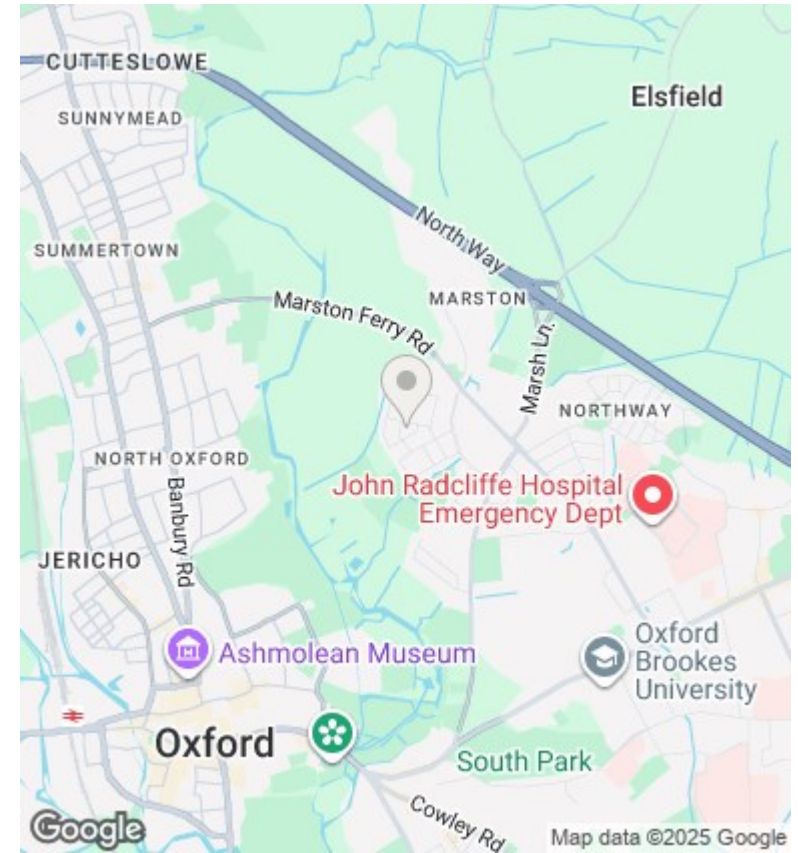
- Two bedroom maisonette
- Communal gardens
- Council Tax Band C
- Part furnished
- Parking for 1 car behind property
- Mains gas electricity and water
- Gas and Electric heating
- EPC rating D



Ground Floor

Total Approx. Floor Area 593 Sq.Ft. (55.10 Sq.M.)

All items illustrated on this plan are included in the "Total Approx Floor Area"



Directions

Viewings

Viewings by arrangement only. Call 01865 515900 to make an appointment.

Council Tax Band

C

EPC Rating:

D

Energy Efficiency Rating		Current	Potential
<i>Very energy efficient - lower running costs</i>			
(92 plus) A			
(81-91) B			
(69-80) C			79
(55-68) D		60	
(39-54) E			
(21-38) F			
(1-20) G			
<i>Not energy efficient - higher running costs</i>			
England & Wales		EU Directive 2002/91/EC	