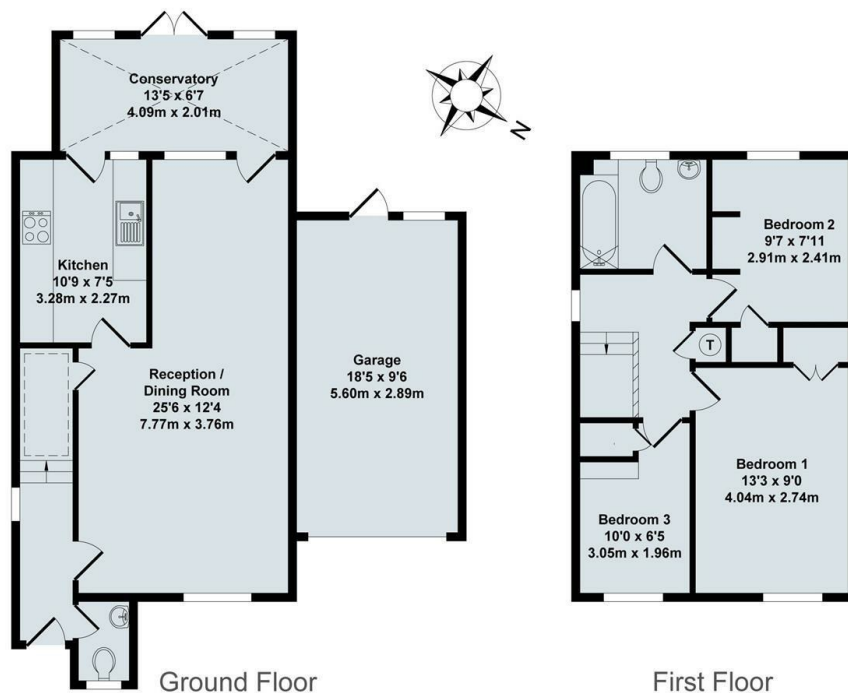




8 Harlow Way, Marston, Oxford, OX3 0QS

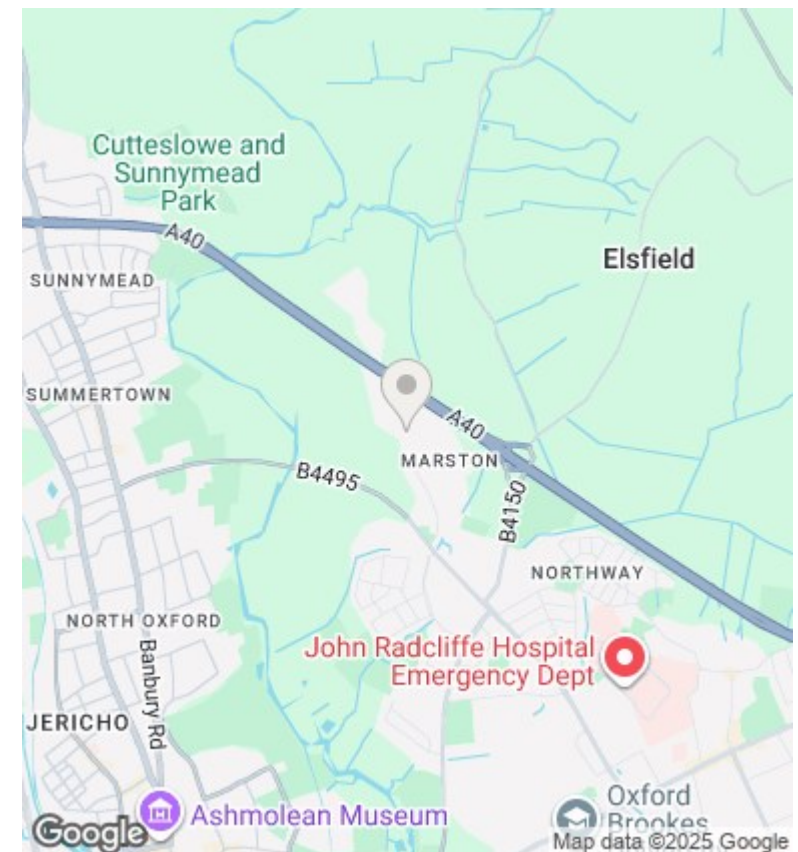
£1,900 PCM - 11th October 2025.

- Three bedroom detached house
- Easy access to City Centre and Headington hospitals
- Gas CH
- Mains gas electricity and water
- Quiet location in cul-de-sac
- Cloakroom
- EPC rating D
- Unfurnished
- Garage and off street parking
- Council Tax Band E



Total Approx. Floor Area 1108 Sq.Ft. (102.90 Sq.M.)

All items illustrated on this plan are included in the "Total Approx Floor Area"



Directions

Viewings

Viewings by arrangement only. Call 01865 515900 to make an appointment.

Council Tax Band

E

EPC Rating:

D

Energy Efficiency Rating		
	Current	Potential
Very energy efficient - lower running costs		
(92-plus) A		
(81-91) B		87
(69-80) C		
(55-68) D	64	
(39-54) E		
(21-38) F		
(1-20) G		
Not energy efficient - higher running costs		
England & Wales	EU Directive 2002/91/EC	