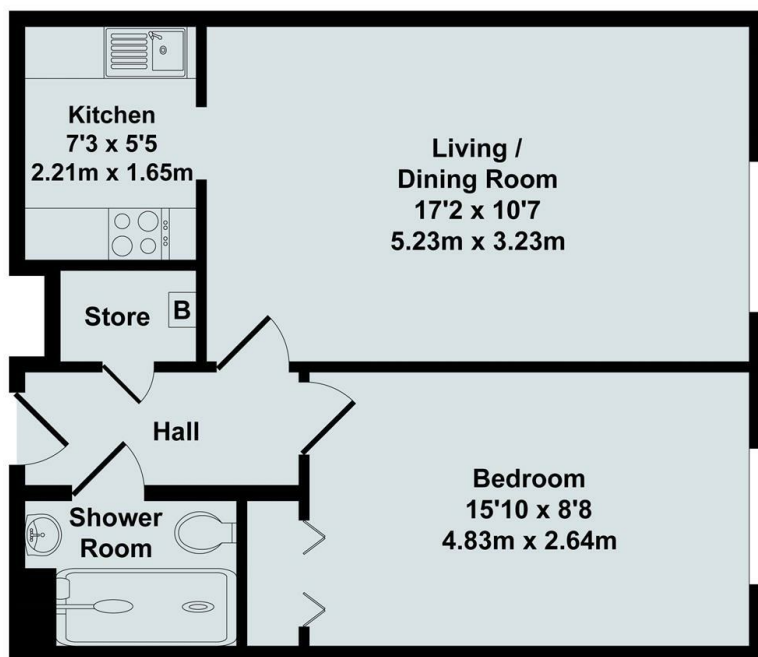




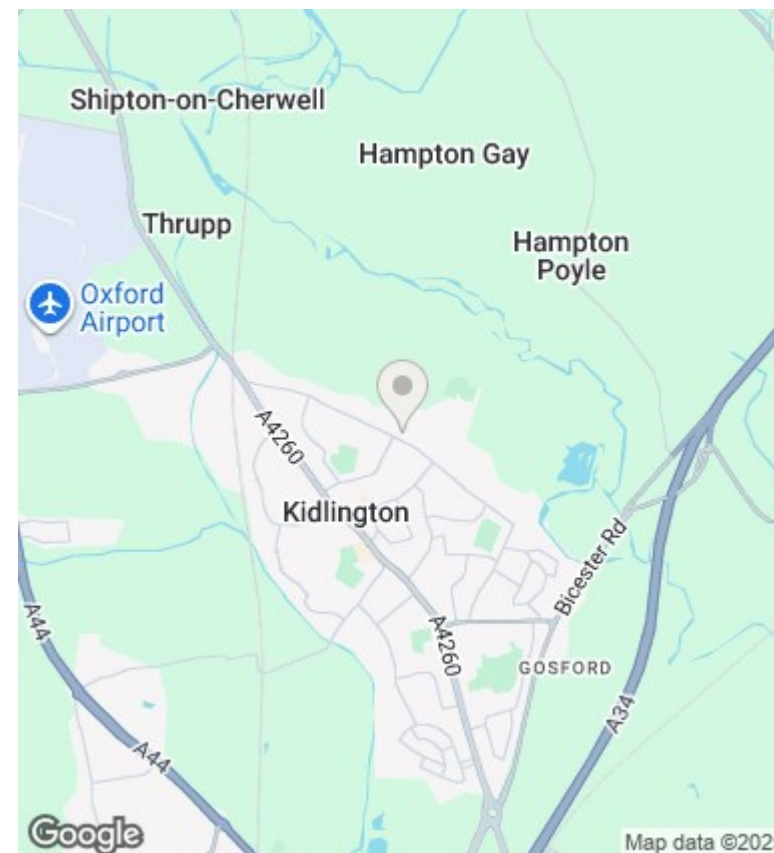
Flat 22, Homewell House The Moors, Kidlington, OX5 2XT

£950 - 20th September 2025.

- One bedroom retirement flat
- Electric heating
- Communal car parking and gardens
- Mains electricity and water
- Over 60's only (for couples, one person may be 55 and over)
- House manager
- EPC rating B
- Unfurnished
- Residents lounge
- Council Tax Band B



Total Approx. Floor Area 445 Sq.Ft. (41.30 Sq.M.)
All items illustrated on this plan are included in the "Total Approx Floor Area"



Directions

Viewings

Viewings by arrangement only. Call 01865 515900 to make an appointment.

Council Tax Band

B

EPC Rating:

B

Energy Efficiency Rating		
	Current	Potential
Very energy efficient - lower running costs		
(92 plus) A		
(81-91) B	82	84
(69-80) C		
(55-68) D		
(39-54) E		
(21-38) F		
(1-20) G		
Not energy efficient - higher running costs		
England & Wales	EU Directive 2002/91/EC	