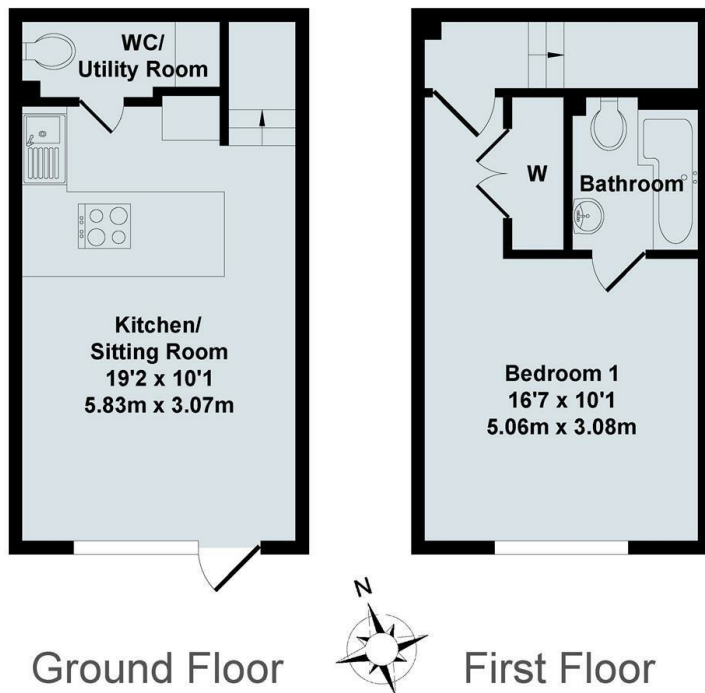




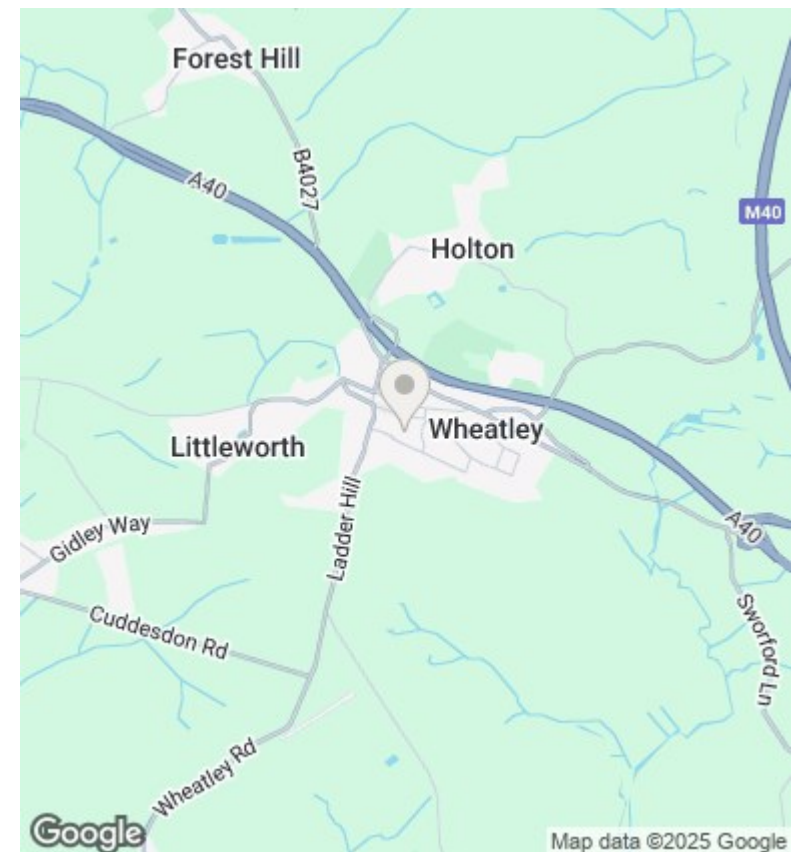
The Shoebox, 95C High Street, Wheatley, Oxford, Oxfordshire,

£1,250 PCM - 4th September 2025.

- Unique One Bedroom Detached House
- Integrated Appliances & Washing Machine
- Mains electricity and water
- Available Fully Furnished
- Electric Heating
- EPC Rating C
- Open Plan Living/Kitchen Area
- On street parking with restrictions
- Council Tax Band C



Total Approx. Floor Area 385 Sq.Ft. (35.80 Sq.M.)
 All items illustrated on this plan are included in the "Total Approx Floor Area"



Directions

Viewings

Viewings by arrangement only. Call 01865 515900 to make an appointment.

Council Tax Band

C

EPC Rating:

C

| Energy Efficiency Rating | | |
|---|-----------|-------------------------|
| | Current | Potential |
| Very energy efficient - lower running costs | | |
| (92 plus) A | | 96 |
| (81-91) B | 75 | |
| (69-80) C | | |
| (55-68) D | | |
| (39-54) E | | |
| (21-38) F | | |
| (1-20) G | | |
| Not energy efficient - higher running costs | | |
| England & Wales | | EU Directive 2002/91/EC |