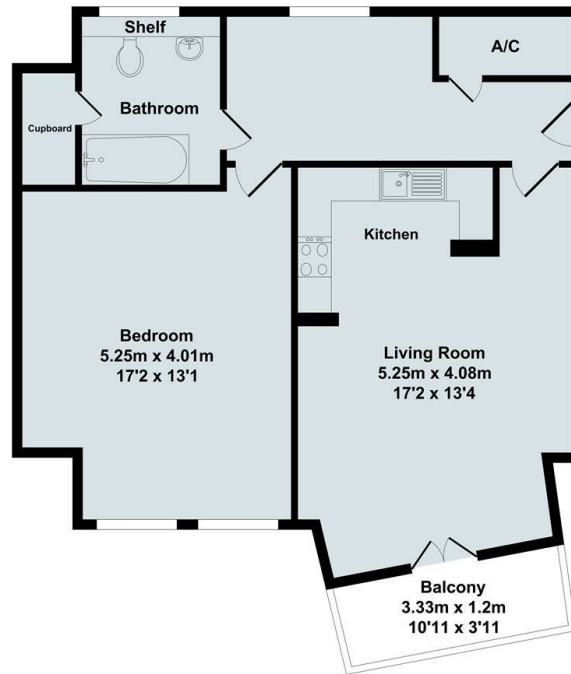




Flat 5 Temple Court, 109 Oxford Road, Cowley, Oxford, OX4

£1,300 PCM - 2nd August 2025.

- Second floor apartment
- Balcony
- Parking for 1 car and bicycle storage
- Mains electricity and water
- One bedroom
- Electric heating
- EPC rating C
- Unfurnished with appliances
- Gated development
- Council Tax Band B



Approx. Floor
Area 61.47 Sq.M.
(662 Sq.Ft.)

Total Approx. Floor Area 61.47 Sq.M. (662 Sq.Ft.)

Directions

Viewings

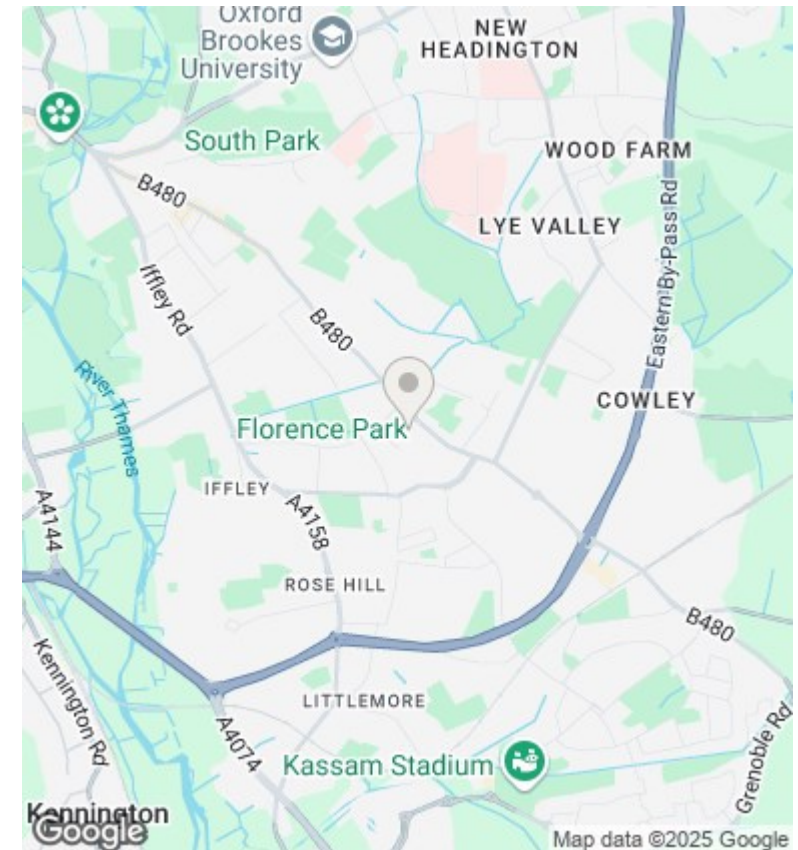
Viewings by arrangement only. Call 01865 515900 to make an appointment.

Council Tax Band

B

EPC Rating:

C



Energy Efficiency Rating		
	Current	Potential
Very energy efficient - lower running costs		
(92-plus) A		
(81-91) B	78	79
(69-80) C		
(55-68) D		
(39-54) E		
(21-38) F		
(1-20) G		
Not energy efficient - higher running costs		
England & Wales	EU Directive 2002/91/EC	