



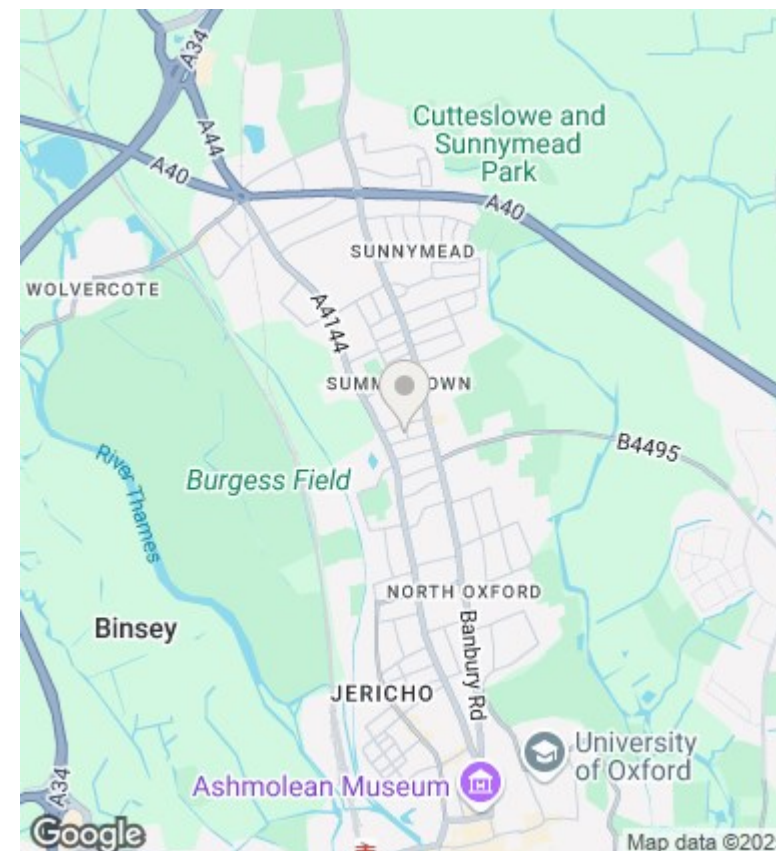
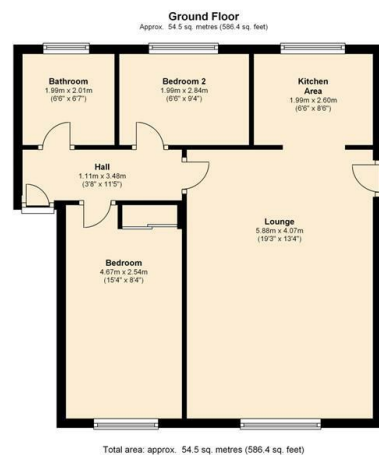
2 Quercus Court, Oakthorpe Road, Oxford, OX2 7BF

£1,450 PCM - 1st September 2025.

- One bedroom
- Ground floor
- EPC rating D
- Study
- Communal garden
- Council Tax Band D
- Furnished
- NO PARKING
- Not suitable for sharers or children



FLOOR PLAN - Flat 2 Quercus Court, Oakthorpe Road, OX2 7BF



Directions

Viewings

Viewings by arrangement only. Call 01865 515900 to make an appointment.

Council Tax Band

EPC Rating:

D

Energy Efficiency Rating		
	Current	Potential
Very energy efficient - lower running costs		
(92 plus) A		
(81-91) B		
(69-80) C		
(55-68) D	65	75
(39-54) E		
(21-38) F		
(1-20) G		
Not energy efficient - higher running costs		
England & Wales	EU Directive 2002/91/EC	