



Flat 7 Manor Court, High Street, Kidlington, Oxfordshire, OX5 2DR

£1,050 - 9th August 2025

- Studio
- Kitchen
- Parking for 1 car
- Mains electricity and water
- Period property
- Shower room
- EPC rating D
- Part furnished
- Communal garden
- Council Tax Band A

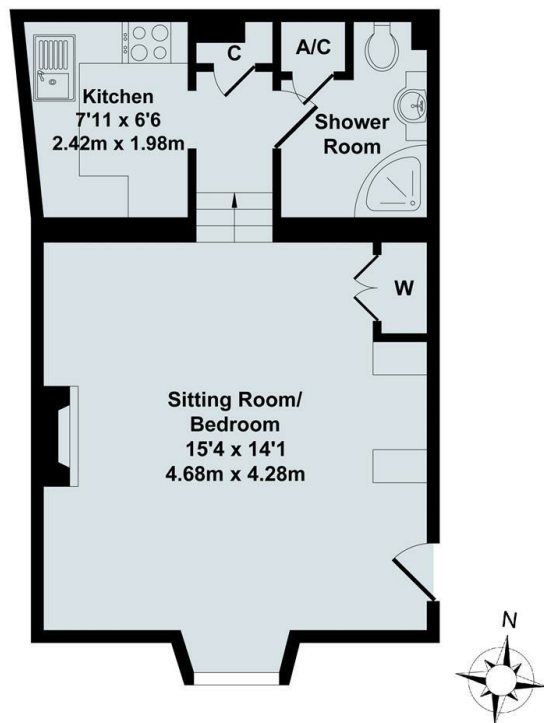
Flat 7 Manor Court, High Street, Kidlington OX5 2DR

Forming part of this period property located on Kidlington High Street, a first floor studio flat in very good condition throughout. Walking distance of local shops/supermarket and buses to the City Centre, Hospitals and Parkway station. Part furnished. Only a short drive to Kidlington airport. Open/plan style Living/Dining room/Bedroom - with pull down double bed, fitted wardrobe and ornamental fireplace. Fully fitted kitchen with electric cooker, fridge/freezer and washing machine, Shower room. Electric heating. Communal gardens. Parking for 1 car.

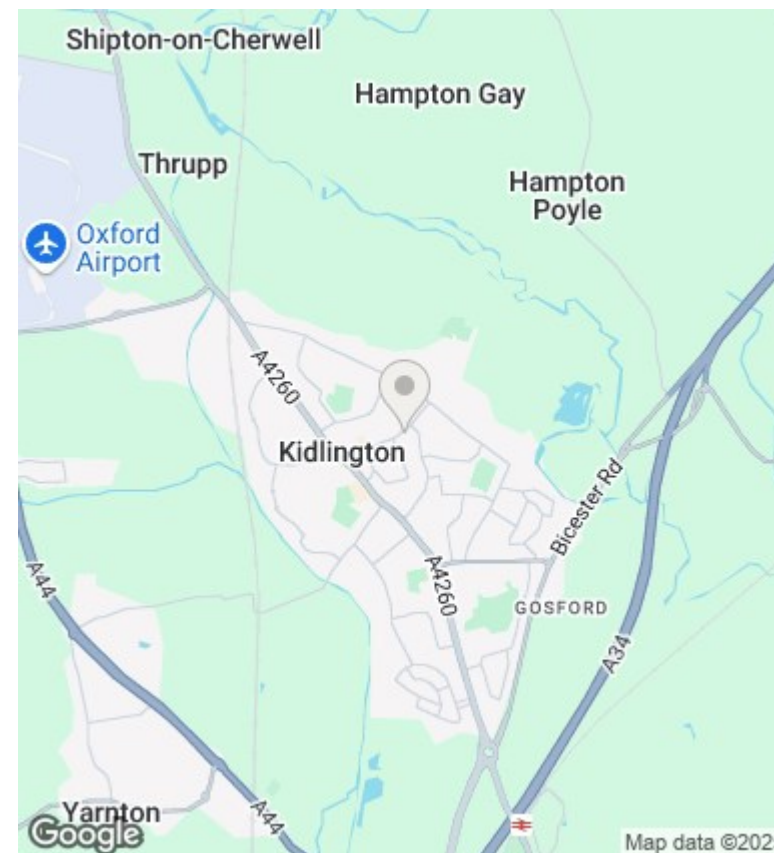


Council Tax Band: A





Total Approx. Floor Area 375 Sq.Ft. (34.80 Sq.M.)
All items illustrated on this plan are included in the "Total Approx Floor Area"



Directions

Viewings

Viewings by arrangement only. Call 01865 515900 to make an appointment.

Council Tax Band

A

Energy Efficiency Rating		
	Current	Potential
Very energy efficient - lower running costs		
(92 plus) A		84
(81-91) B		
(69-80) C		
(55-68) D	56	
(39-54) E		
(21-38) F		
(1-20) G		
Not energy efficient - higher running costs		
England & Wales		EU Directive 2002/91/EC 