



## 15b Harts Close, Kidlington, OX5 1AZ

£1,050 - 30th June 2025

- One bedroom maisonette
- Short walk for buses to City Centre, Hospitals and Parkway
- Front garden
- Mains gas electricity and water
- First floor canalside location
- Gas CH
- EPC rating C
- Unfurnished with kitchen appliances
- On street parking
- Council Tax Band A

# 15b Harts Close, Kidlington OX5 1AZ

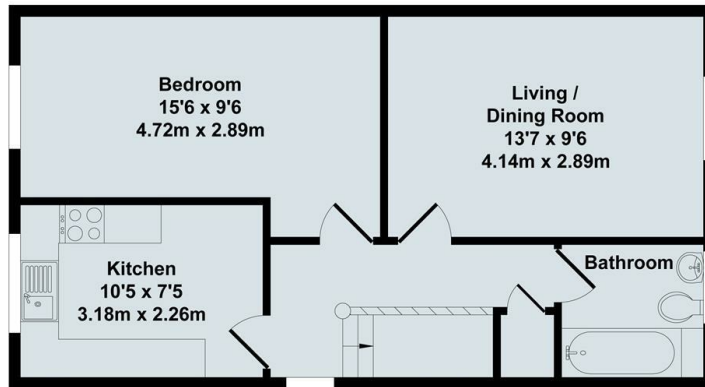
Located alongside the Oxford Canal, a one bedroom first floor maisonette in good condition and available unfurnished. Double bedroom, Bathroom with shower over, Kitchen with electric cooker, fridge/freezer and washing machine, Living room, Gas CH. Small front garden. On street parking.



Council Tax Band: A



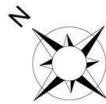




First Floor



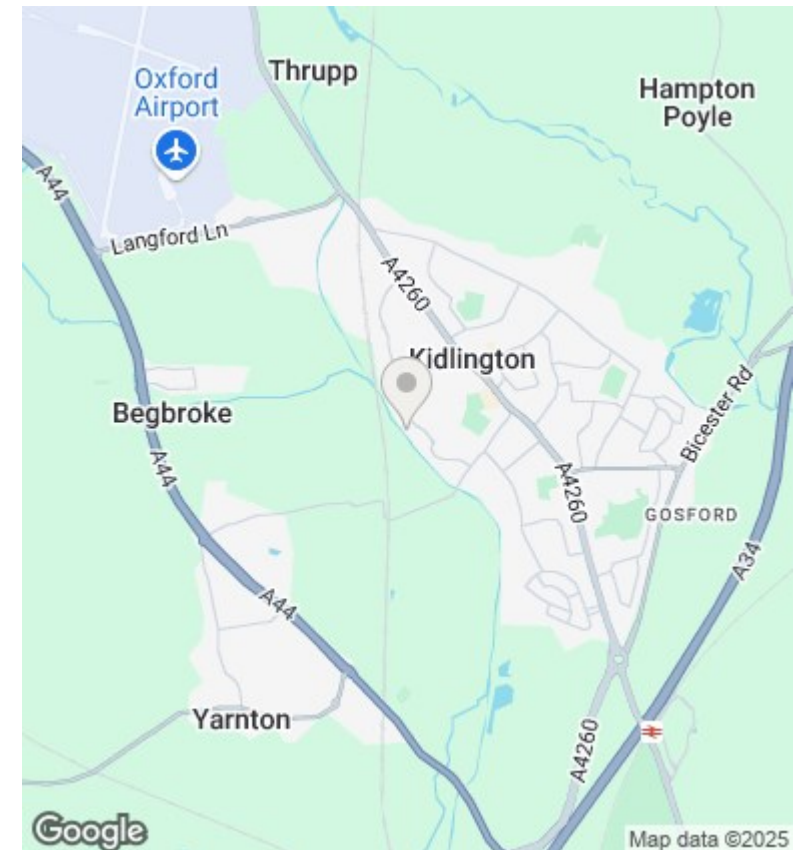
Ground Floor



## Harts Close

Total Approx. Floor Area 493 Sq.Ft. (45.80 Sq.M.)

All items illustrated on this plan are included in the "Total Approx Floor Area"



## Directions

## Viewings

Viewings by arrangement only. Call 01865 515900 to make an appointment.

## Council Tax Band

A

Energy Efficiency Rating		
	Current	Potential
Very energy efficient - lower running costs		
(92 plus) <b>A</b>		
(81-91) <b>B</b>		
(69-80) <b>C</b>	73	76
(55-68) <b>D</b>		
(39-54) <b>E</b>		
(21-38) <b>F</b>		
(1-20) <b>G</b>		
Not energy efficient - higher running costs		
England & Wales <small>EU Directive 2002/91/EC</small>		