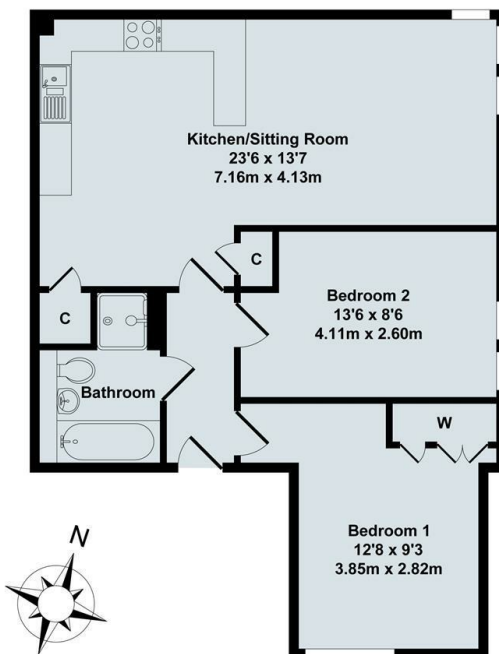




8 Bowood Court, Oxford Road, Kidlington, OX5 1FN

£1,400 PCM - 30th July 2025.

- Two bedrooms
- Ground Floor
- Parking for one car
- Council Tax Band C
- One bathroom
- Gas CH
- EPC rating C
- Unfurnished with appliances
- Bike store
- Mains gas electricity and water



Total Approx. Floor Area 625 Sq.Ft. (58.10 Sq.M.)

All items illustrated on this plan are included in the "Total Approx Floor Area"

Directions

Doorcode: 1785

Viewings

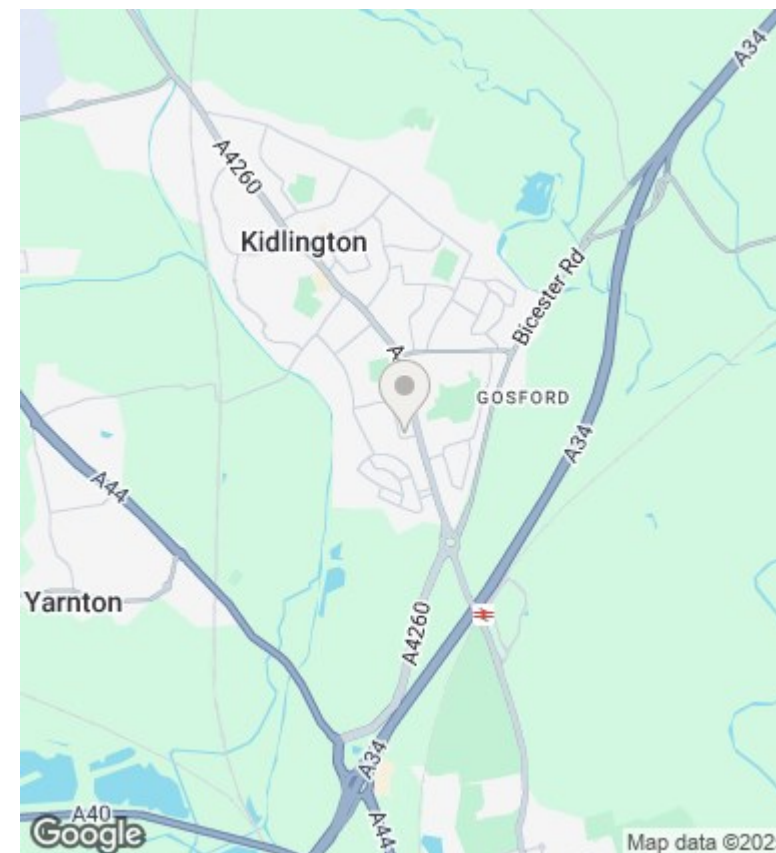
Viewings by arrangement only. Call 01865 515900 to make an appointment.

Council Tax Band

C

EPC Rating:

C



Energy Efficiency Rating		
	Current	Potential
Very energy efficient - lower running costs		
(92 plus) A		
(81-91) B	80	81
(69-80) C		
(55-68) D		
(39-54) E		
(21-38) F		
(1-20) G		
Not energy efficient - higher running costs		
England & Wales	EU Directive 2002/91/EC	