

THOMAS  
MERRIFIELD

SALES LETTINGS



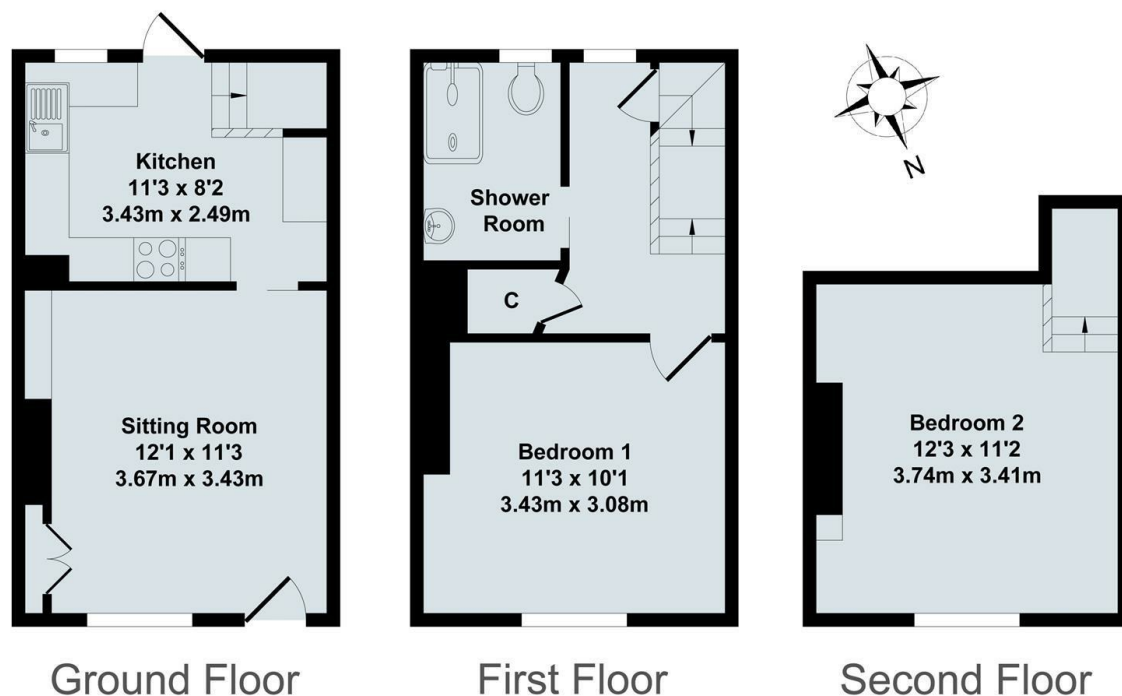
## 99 Corn Street, Witney, Oxfordshire, OX28 6AU

£1,450 - 23rd June 2025.

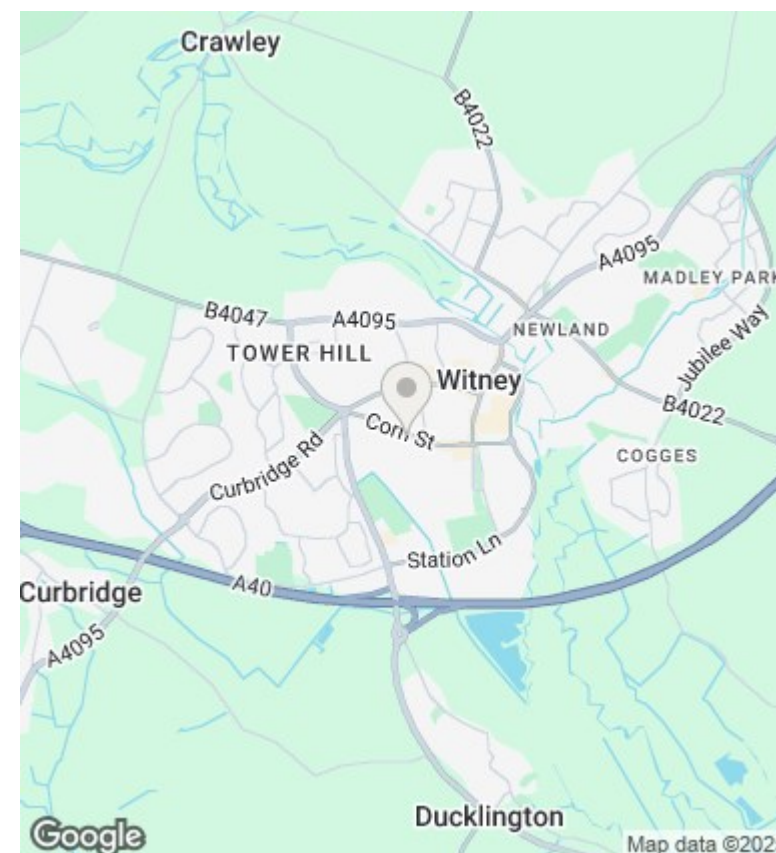
- Three storey period cottage
- Gas CH
- Rear garden - right of way for neighbouring property
- Mains gas, electricity and water
- Unfurnished
- On street parking with restrictions
- EPC rating D
- Walk in shower
- NOTE: Steep staircases make this unsuitable for children
- Council Tax Band A

Holyfield House, 1 Walton Well Road, Oxford, OX2 6ED  
01865 515900

info@tmlettings.co.uk  
<https://www.tmlettings.co.uk>



Total Approx. Floor Area 607 Sq.Ft. (56.40 Sq.M.)  
All items illustrated on this plan are included in the "Total Approx Floor Area"



## Directions

## Viewings

Viewings by arrangement only. Call 01865 515900 to make an appointment.

## Council Tax Band

A

## EPC Rating:

D

Energy Efficiency Rating		
	Current	Potential
Very energy efficient - lower running costs		
(92 plus) <b>A</b>		90
(81-91) <b>B</b>		
(69-80) <b>C</b>		
(55-68) <b>D</b>	64	
(39-54) <b>E</b>		
(21-38) <b>F</b>		
(1-20) <b>G</b>		
Not energy efficient - higher running costs		
England & Wales		EU Directive 2002/91/EC