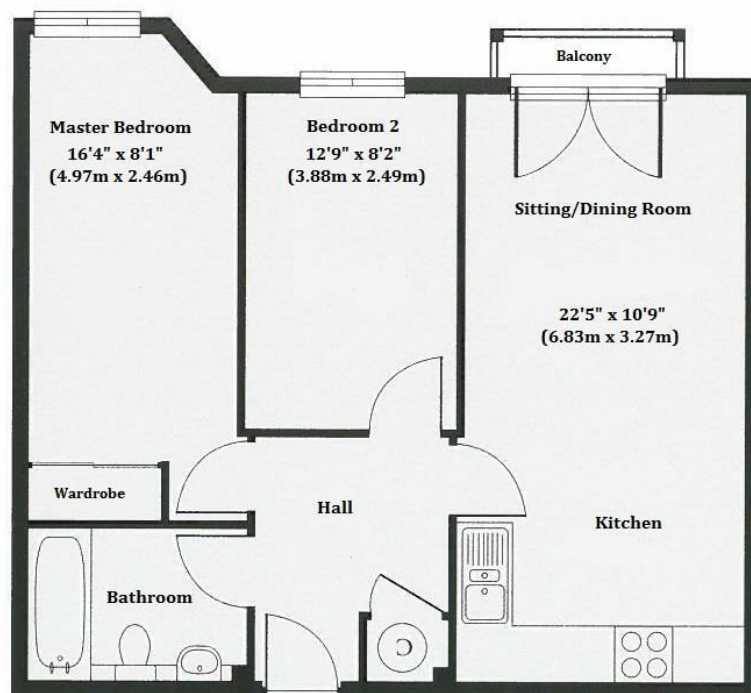




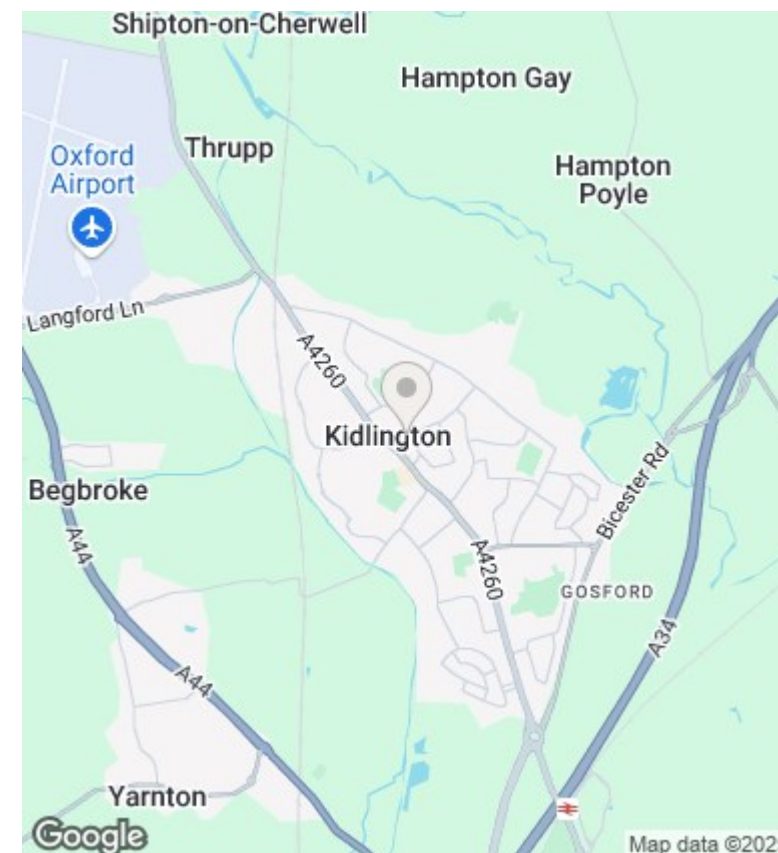
20 The Hampden Building High Street, Kidlington, Oxfordshire,

£1,350 PCM - 3rd May 2025.

- Two bedroom second floor apartment
- Open plan living/dining/kitchen
- Allocated parking for 1 car
- Mains water and electricity
- AVAILABLE UNFURNISHED.
- Juliette balcony
- EPC rating C
- Double bedrooms with fitted wardrobes
- Electric heating
- Council Tax Band C



For identification purposes and guidance only



Directions

Viewings

Viewings by arrangement only. Call 01865 515900 to make an appointment.

Council Tax Band

C

EPC Rating:

C

