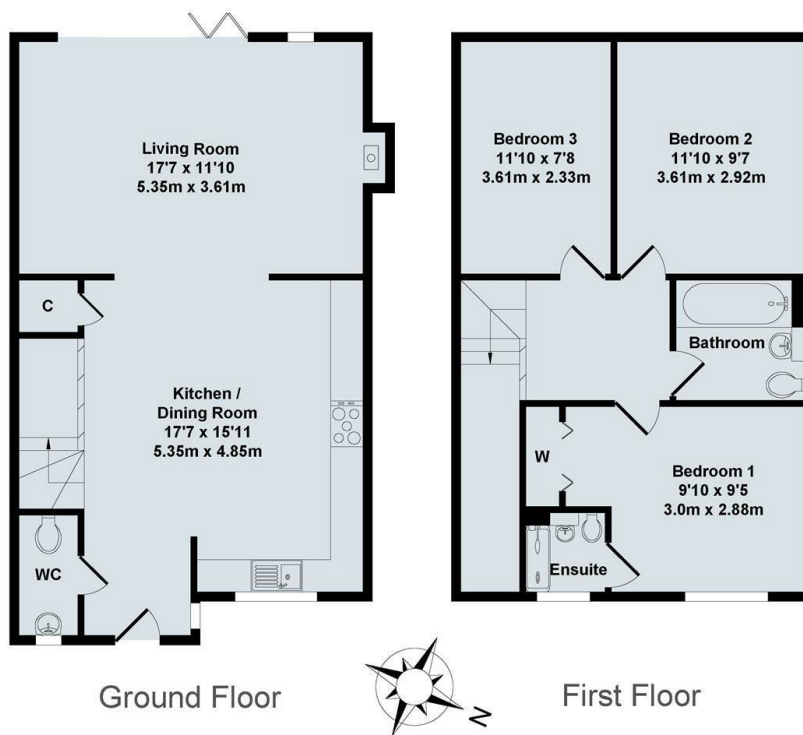




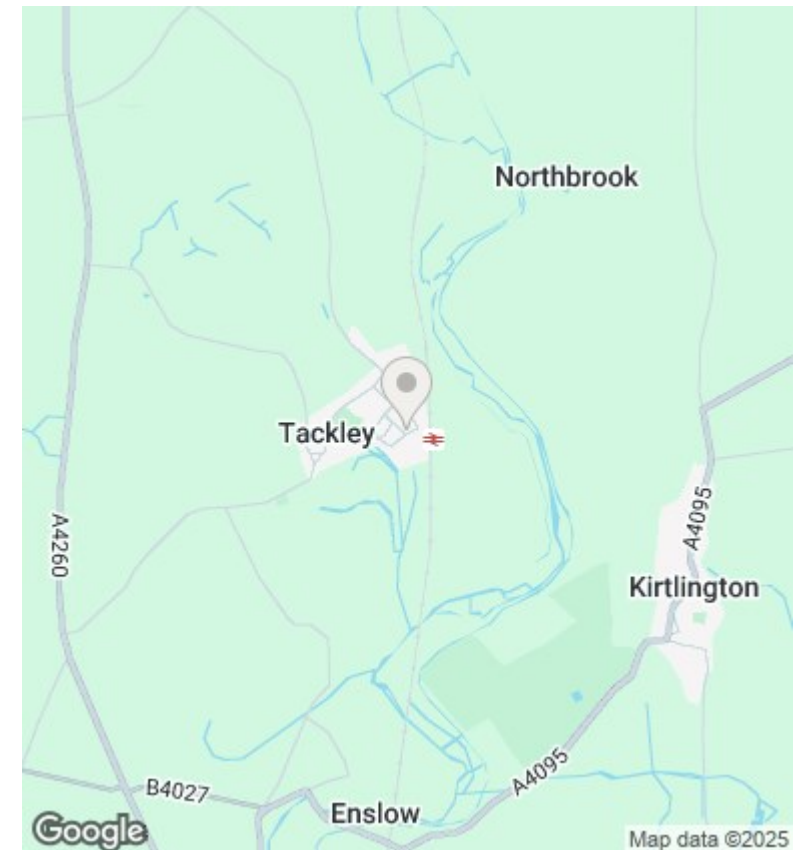
## 1 Clow Cottages, 54 Nethercote Road, Tackley, Kidlington, OX5

£1,800 PCM - 19th April 2025.

- Three bedrooms
- White goods
- Off street parking
- Mains gas, electricity and water
- Two bathrooms
- Gas CH
- EPC rating B
- Unfurnished with integrated appliances
- Walking distance of mainline rail station
- Council Tax Band D



Total Approx. Floor Area 1009 Sq.Ft. (93.7 Sq.M.)  
All items illustrated on this plan are included in the "Total Approx Floor Area"



## Directions

## Viewings

Viewings by arrangement only. Call 01865 515900 to make an appointment.

## Council Tax Band

D

## EPC Rating:

B

| Energy Efficiency Rating                    |           |                         |
|---|-----------|-------------------------|
|   | Current   | Potential               |
| Very energy efficient - lower running costs |           |                         |
| (92-plus) <b>A</b>                          |           | <b>95</b>               |
| (81-91) <b>B</b>                            | <b>84</b> |                         |
| (69-80) <b>C</b>                            |           |                         |
| (55-68) <b>D</b>                            |           |                         |
| (39-54) <b>E</b>                            |           |                         |
| (21-38) <b>F</b>                            |           |                         |
| (1-20) <b>G</b>                             |           |                         |
| Not energy efficient - higher running costs |           |                         |
| England & Wales                             |           | EU Directive 2002/91/EC |