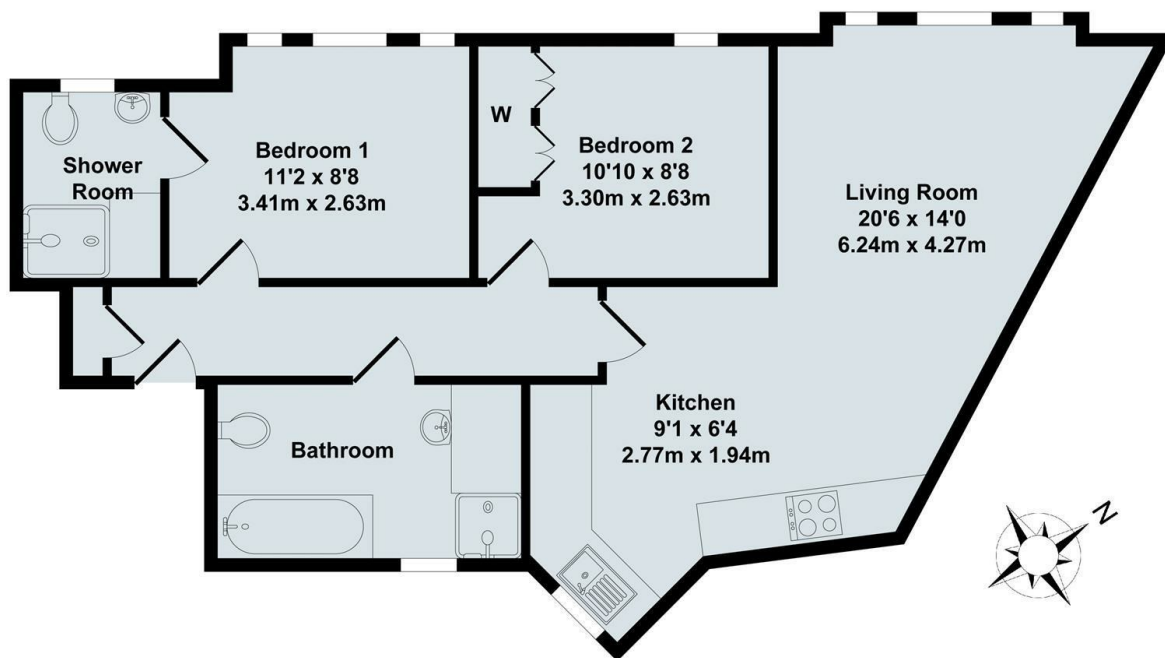




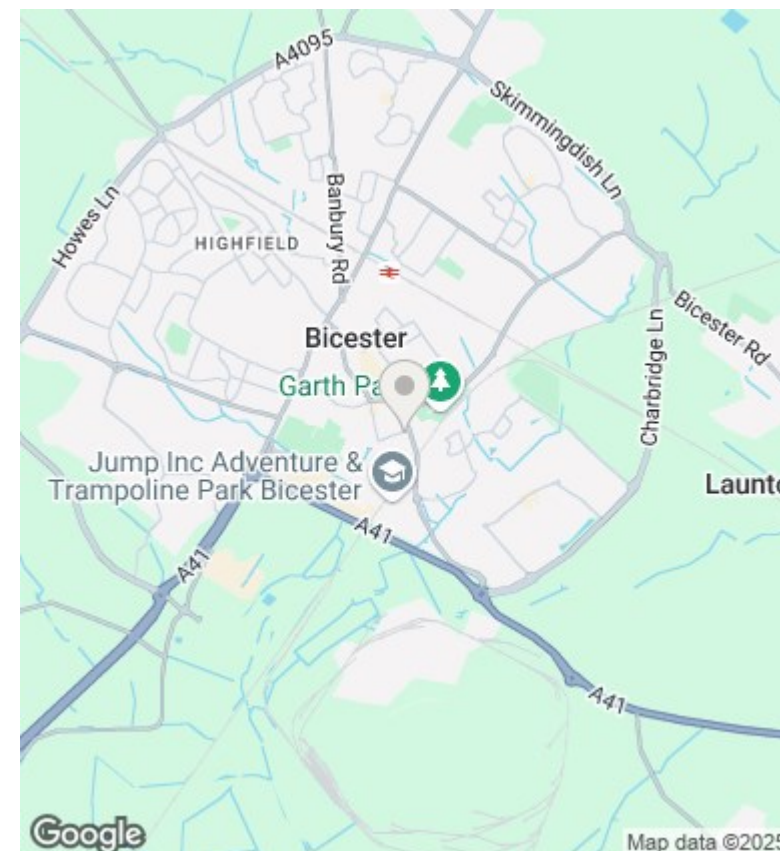
## 7 Priory View Priory Road, Bicester, OX26 6ET

£1,400 - 7th June 2025.

- Two double bedroom first floor apartment
- Gas CH
- Council Tax Band B
- River Flood Risk High/Surface Water Flood Risk Low
- Ensuite to master bedroom
- Gated secure parking for 1 car
- Mains gas electricity and water
- Fully furnished
- Town centre location
- EPC rating B



Total Approx. Floor Area 650 Sq.Ft. (60.40 Sq.M.)  
All items illustrated on this plan are included in the "Total Approx Floor Area"



## Directions

## Viewings

Viewings by arrangement only. Call 01865 515900 to make an appointment.

## Council Tax Band

B

## EPC Rating:

C

Energy Efficiency Rating		
	Current	Potential
Very energy efficient - lower running costs		
(92 plus) <b>A</b>		
(81-91) <b>B</b>	80	80
(69-80) <b>C</b>		
(55-68) <b>D</b>		
(39-54) <b>E</b>		
(21-38) <b>F</b>		
(1-20) <b>G</b>		
Not energy efficient - higher running costs		
<b>England &amp; Wales</b>	EU Directive 2002/91/EC	