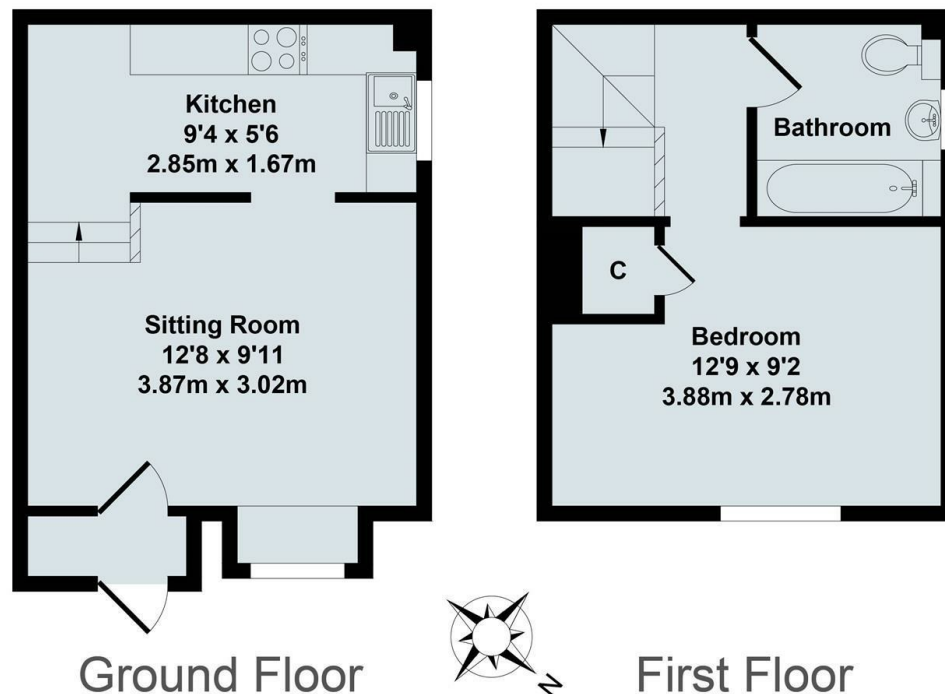




## 21 Thorne Close, Kidlington, Oxfordshire, OX5 1SJ

£1,100 PCM - 30th April 2025.

- One bedroom
- Electric heating
- EPC rating E
- Regret no pets
- Unfurnished
- Off street parking
- Council Tax Band B
- Garden
- Appliances included
- Mains electricity and water



Total Approx. Floor Area 419 Sq.Ft. (38.90 Sq.M.)  
All items illustrated on this plan are included in the "Total Approx Floor Area"

## Directions

## Viewings

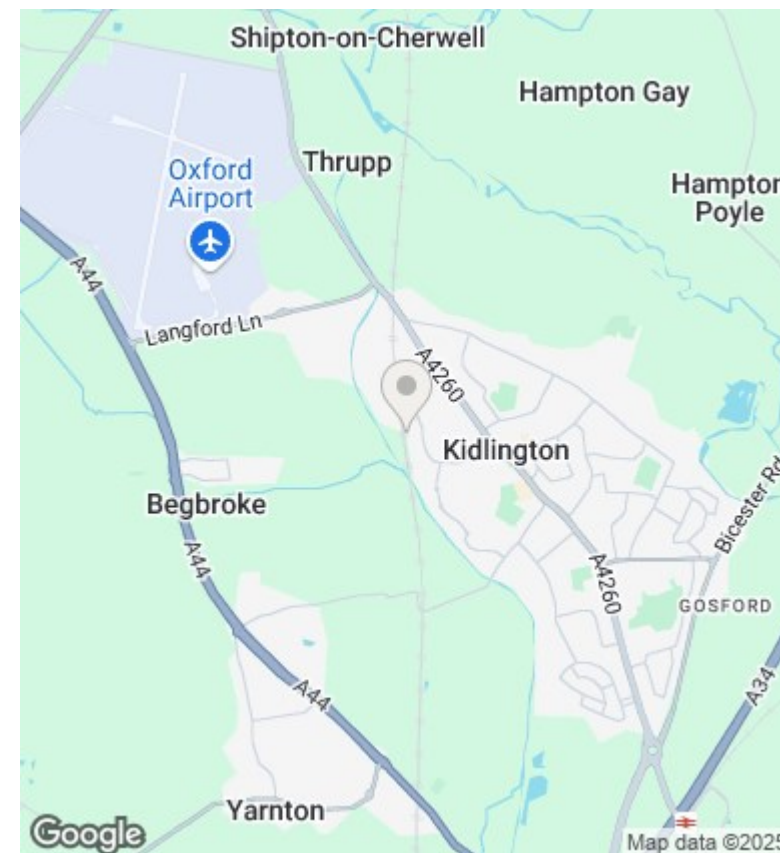
Viewings by arrangement only. Call 01865 515900 to make an appointment.

## Council Tax Band

B

## EPC Rating:

E



Energy Efficiency Rating		
	Current	Potential
Very energy efficient - lower running costs		
(92 plus) <b>A</b>		95
(81-91) <b>B</b>		
(69-80) <b>C</b>		
(55-68) <b>D</b>		
(39-54) <b>E</b>	51	
(21-38) <b>F</b>		
(1-20) <b>G</b>		
Not energy efficient - higher running costs		
England & Wales		EU Directive 2002/91/EC