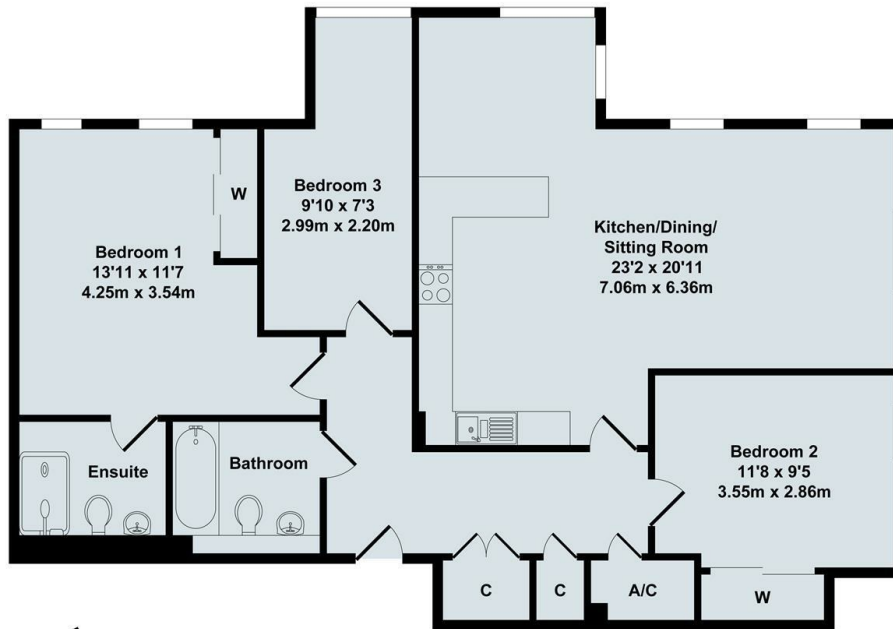




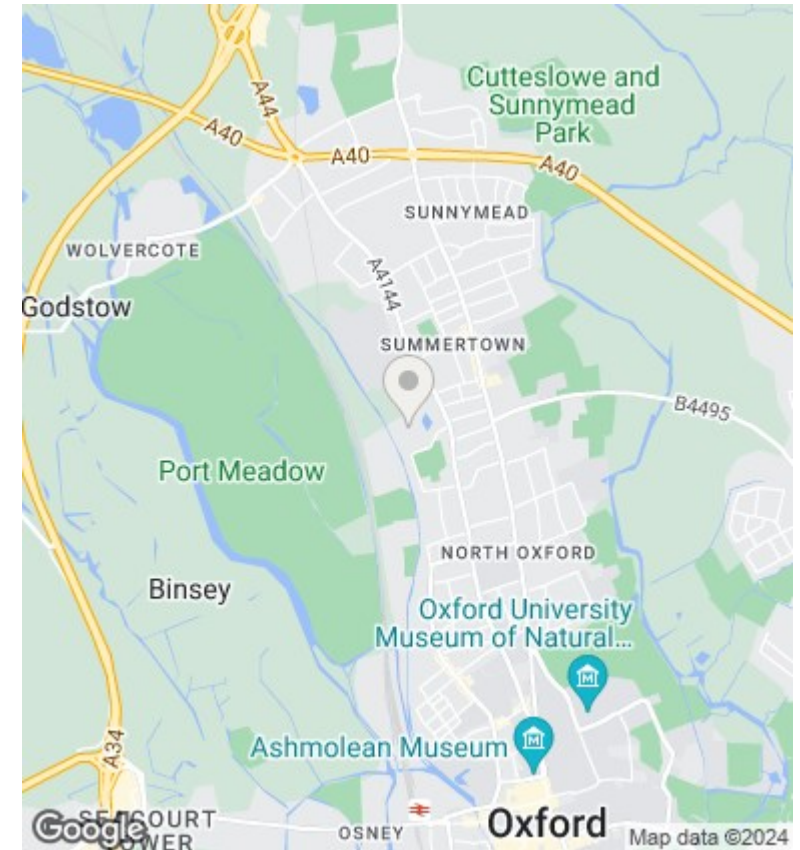
## 6 Elizabeth Jennings Way, Waterways, Oxford, OX2 7BN

£2,500 PCM - 14th September 2024.

- Three bedrooms
- Integrated appliances
- Communal gardens
- MAINS ELECTRIC AND WATER - NO GAS
- Two bathrooms
- Electric heating
- COUNCIL TAX BAND E
- Unfurnished
- Allocated parking for 1 car
- EPC - BAND C



Total Approx. Floor Area 1020 Sq.Ft. (94.80 Sq.M.)  
All items illustrated on this plan are included in the "Total Approx Floor Area"



## Directions

## Viewings

Viewings by arrangement only. Call 01865 515900 to make an appointment.

## Council Tax Band

E

## EPC Rating:

C

Energy Efficiency Rating		Current	Potential
Very energy efficient - lower running costs			
(92 plus) <b>A</b>			
(81-91) <b>B</b>			
(69-80) <b>C</b>		70	80
(55-68) <b>D</b>			
(39-54) <b>E</b>			
(21-38) <b>F</b>			
(1-20) <b>G</b>			
Not energy efficient - higher running costs			
<b>England &amp; Wales</b>		EU Directive 2002/91/EC	