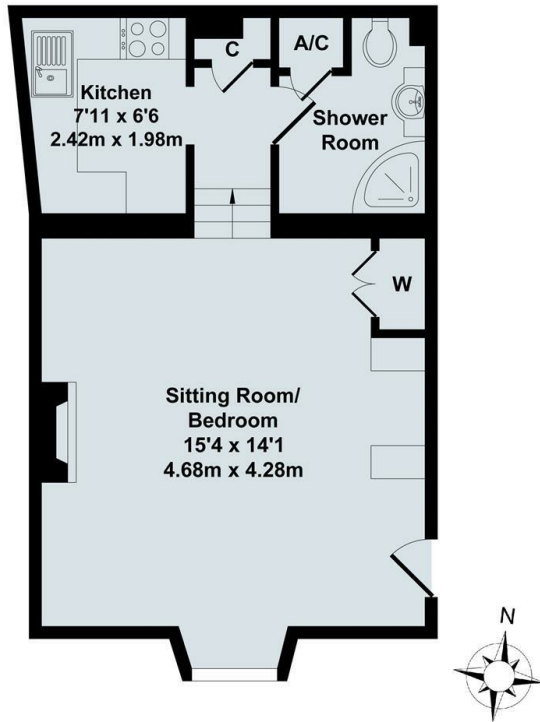




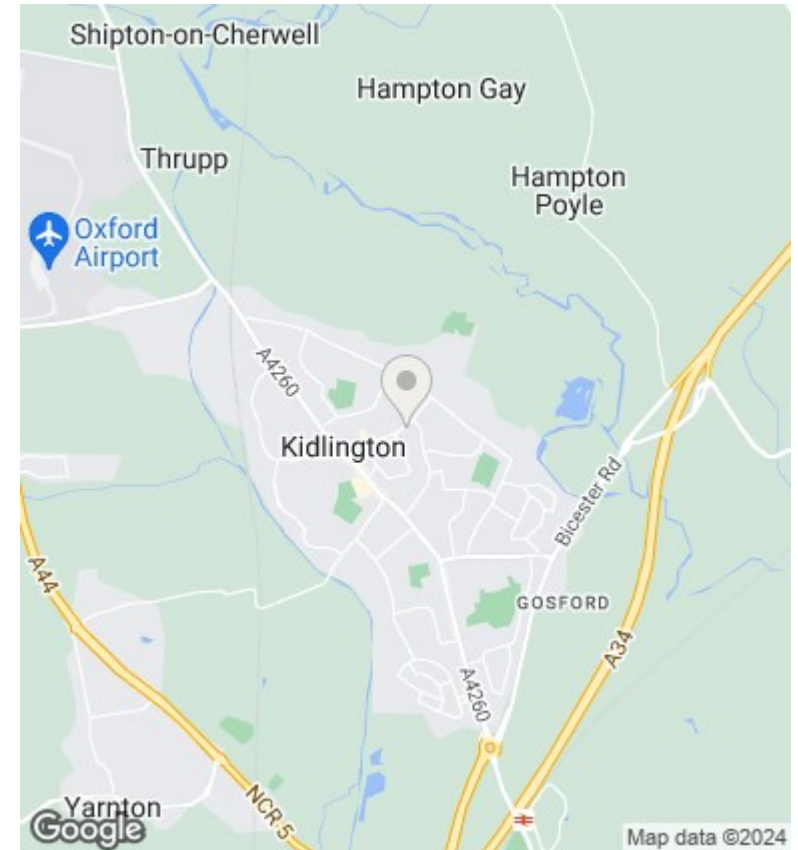
## Flat 7 Manor Court, High Street, Kidlington, Oxfordshire, OX5

£995 - 3rd August 2024.

- Studio
- Kitchen
- Parking for 1 car
- Period property
- Shower room
- EPC rating D
- Part furnished
- Communal garden
- Council Tax Band A



Total Approx. Floor Area 375 Sq.Ft. (34.80 Sq.M.)  
 All items illustrated on this plan are included in the "Total Approx Floor Area"



## Directions

## Viewings

Viewings by arrangement only. Call 01865 515900 to make an appointment.

## Council Tax Band

A

## EPC Rating:

D

Energy Efficiency Rating		
	Current	Potential
<i>Very energy efficient - lower running costs</i>		
(92 plus) <b>A</b>		<b>84</b>
(81-91) <b>B</b>		
(69-80) <b>C</b>		
(55-68) <b>D</b>	<b>56</b>	
(39-54) <b>E</b>		
(21-38) <b>F</b>		
(1-20) <b>G</b>		
<i>Not energy efficient - higher running costs</i>		
<b>England &amp; Wales</b>		EU Directive 2002/91/EC