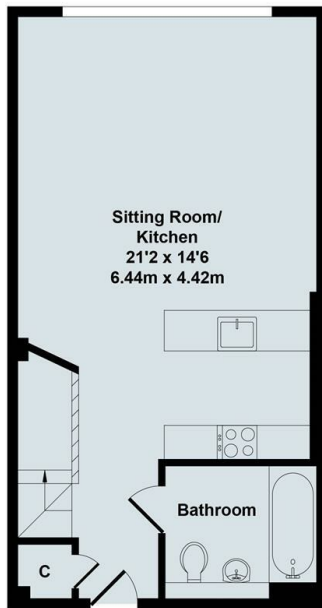




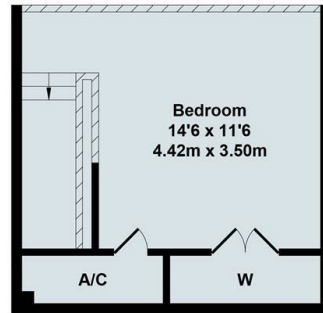
32 Riverside Court, 9 West Way, Oxford, OX2 0FL

£1,500 PCM - 8th August 2023.

- One bedroom apartment
- Integrated appliances
- EPC rating D
- Mezzanine
- Electric heating
- Council Tax Band B
- Unfurnished
- Parking for 1 car
- Mains electricity and water



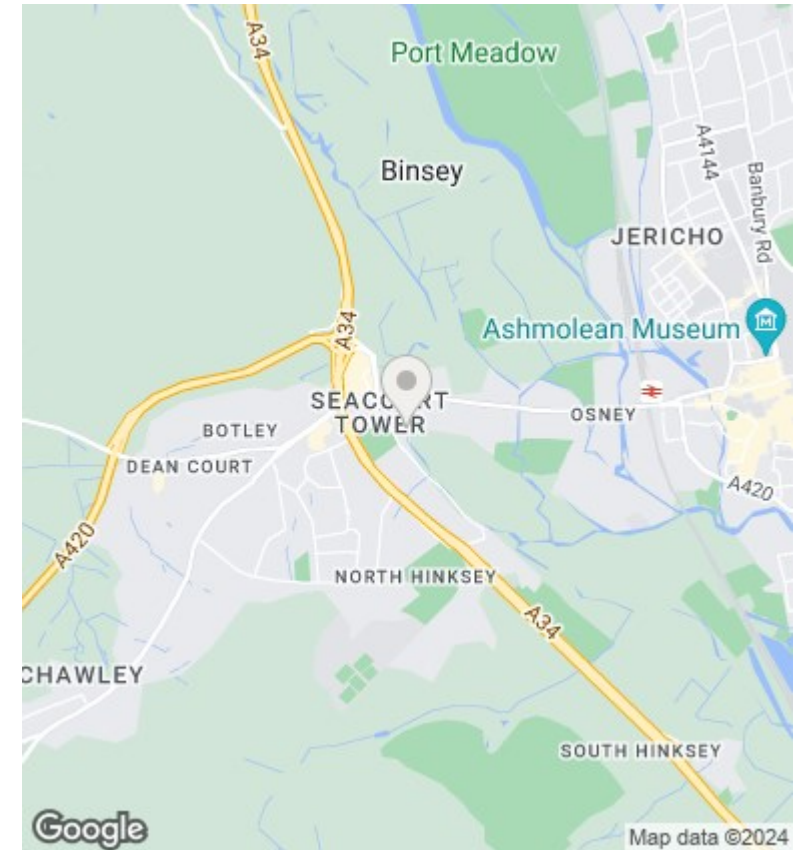
Ground Floor



First Floor

Total Approx. Floor Area 615 Sq.Ft. (57.10 Sq.M.)

All items illustrated on this plan are included in the "Total Approx Floor Area"



Directions

Parking Space number 29

Viewings

Viewings by arrangement only. Call 01865 515900 to make an appointment.

Council Tax Band

B

EPC Rating:

D

Energy Efficiency Rating		Current	Potential
<i>Very energy efficient - lower running costs</i>			
(92 plus)	A		
(81-91)	B		
(69-80)	C		
(55-68)	D	65	65
(39-54)	E		
(21-38)	F		
(1-20)	G		
<i>Not energy efficient - higher running costs</i>			
England & Wales		EU Directive 2002/91/EC	